

WALL'S SECOND ADDITION MB 6-140

1- 76LSM32 2-22-85

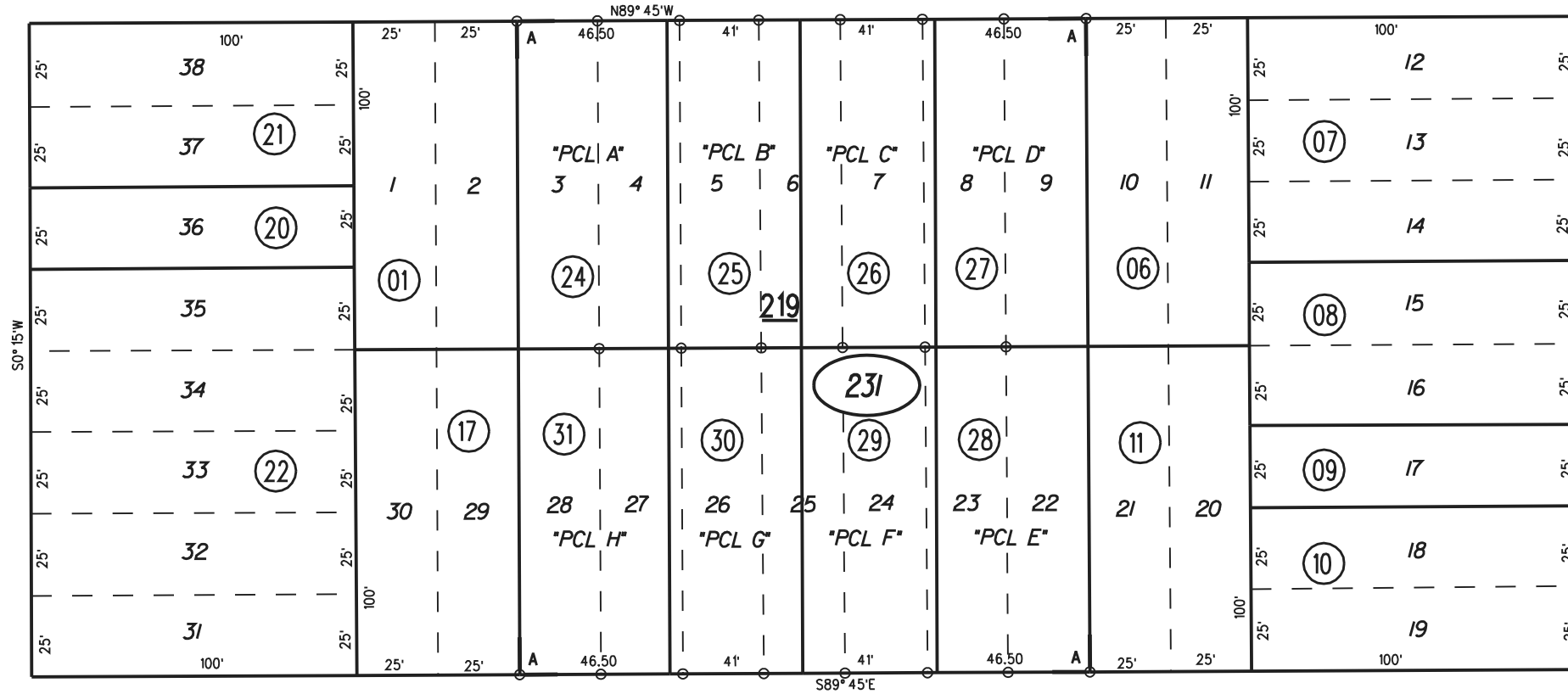
"1991" A- TR 7858 MB 370-39

ALAMO

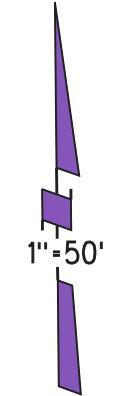
24

AVE.

ST.



ST.

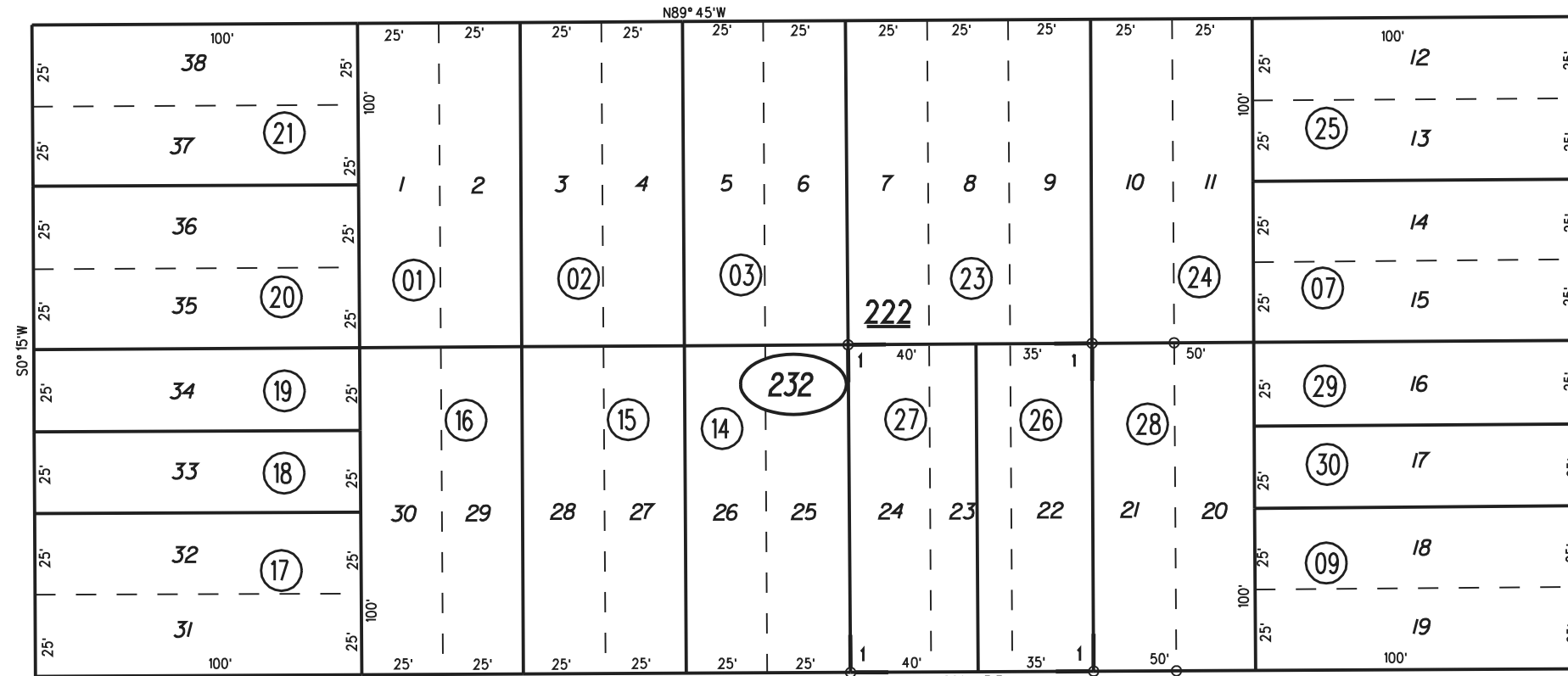


19

DUBOCE

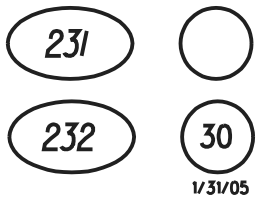
AVE.

KELSEY



26

CHERRY



NOTE: THIS MAP WAS PREPARED FOR ASSESSMENT PURPOSES ONLY. NO LIABILITY IS ASSUMED FOR THE ACCURACY OF THE INFORMATION DELINEATED HEREON. ASSESSOR'S PARCELS MAY NOT COMPLY WITH LOCAL LOT SPLIT OR BUILDING SITE ORDINANCES.

SANFORD

22

AVE.

1962 ROLL FR. 138-56,59
ASSESSOR'S MAP

BOOK 561 PAGE 23
CONTRA COSTA COUNTY, CALIF.