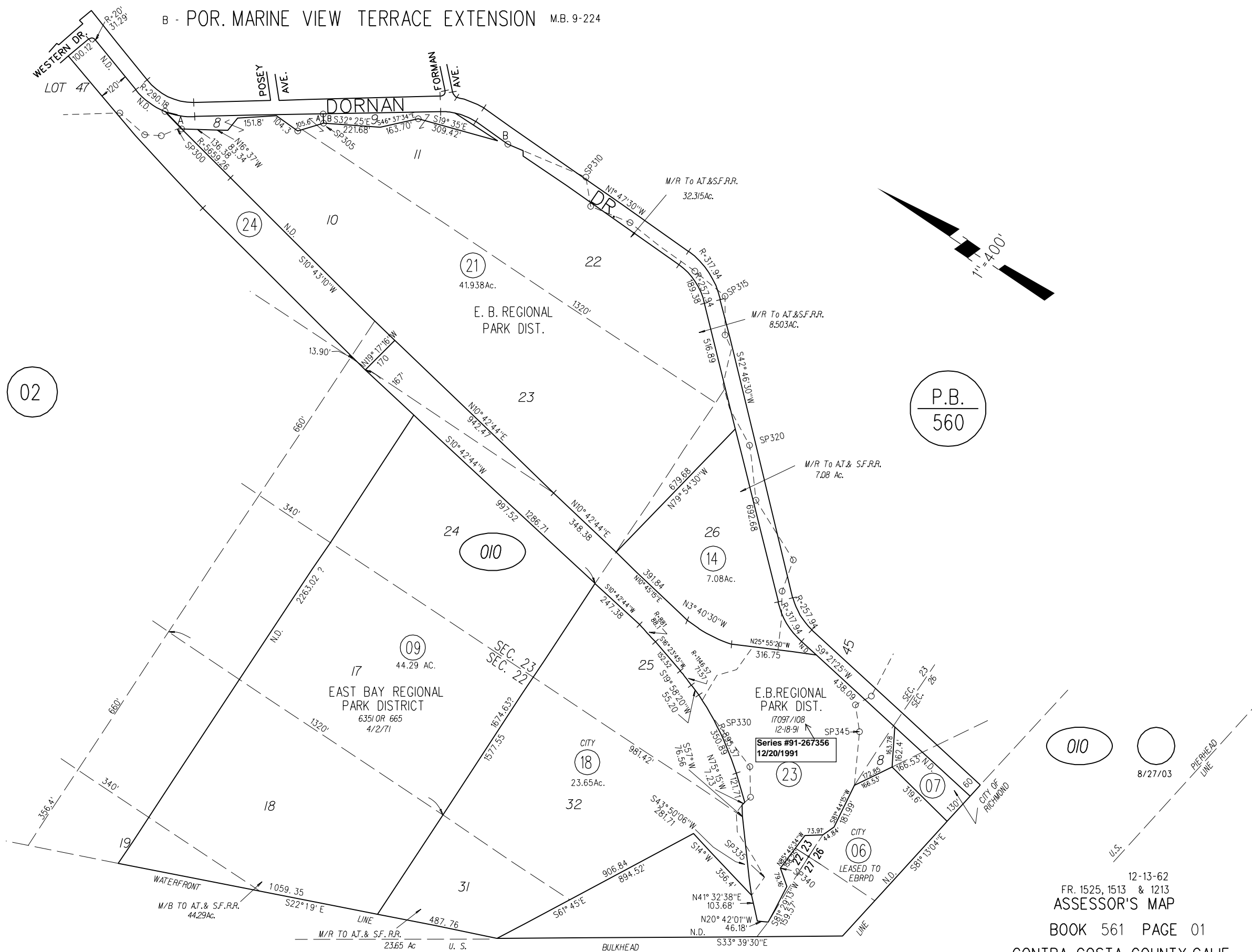


SAN PABLO RANCHO  
 POR. SECTIONS 22,23,26 & 27 T.1N., R.5W.,M.D.B.&M.  
 MAP NO. 1 SALT MARSH & TIDELANDS 1872

- A - POR. MARINE VIEW TERRACE M.B. 9-210
- B - POR. MARINE VIEW TERRACE EXTENSION M.B. 9-224



NOTE: THIS MAP WAS PREPARED FOR ASSESSMENT PURPOSES ONLY. NO LIABILITY IS ASSUMED FOR THE ACCURACY OF THE INFORMATION DELINEATED HEREON. ASSESSOR'S PARCELS MAY NOT COMPLY WITH LOCAL LOT SPLIT OR BUILDING SITE ORDINANCES.