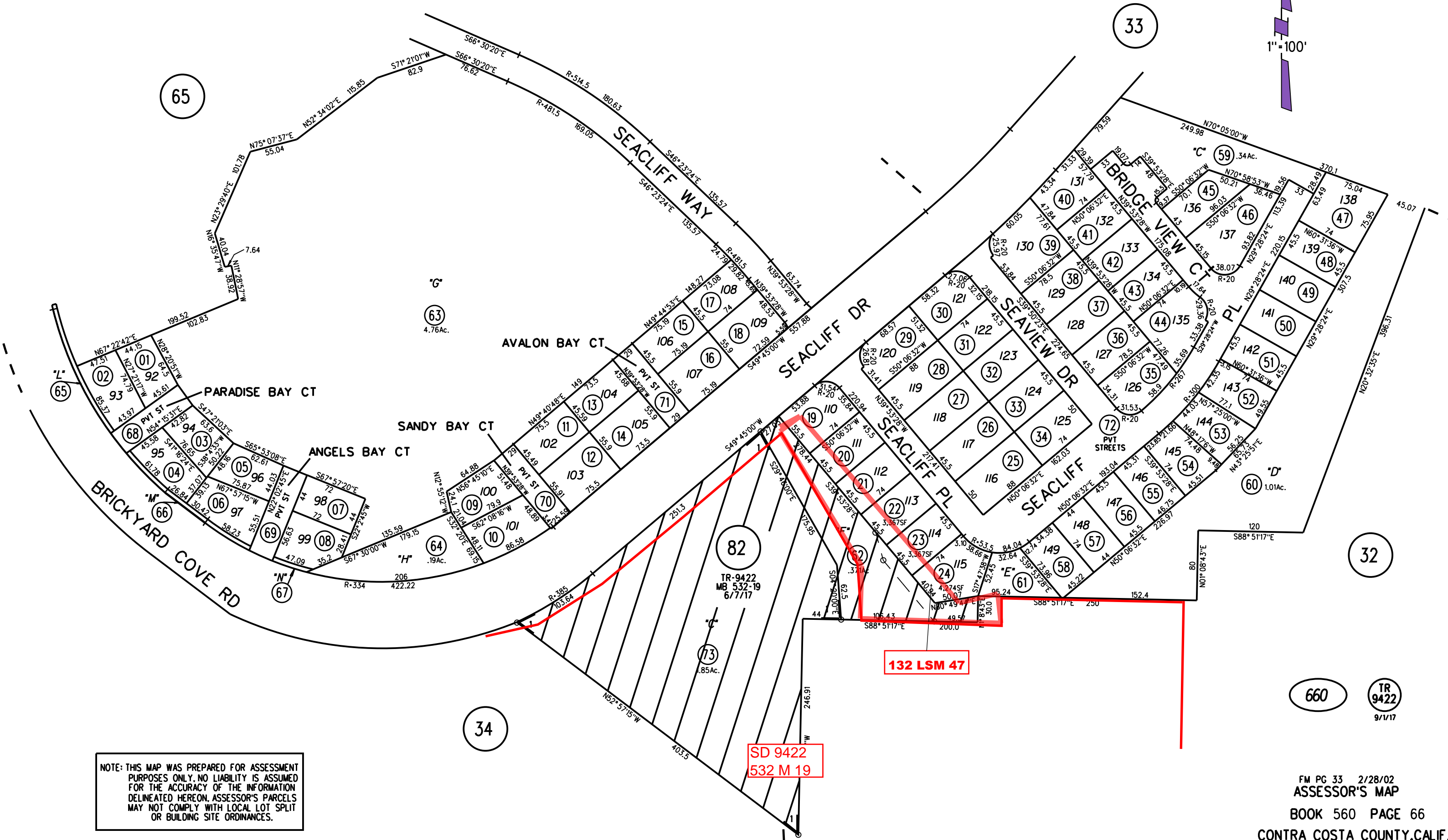


POR TR 7502 M.B. 437-13 (SEACLIFF ESTATES) 12-7-01

1- PCL C 144PM46 2/01/90

1"=100'



NOTE: THIS MAP WAS PREPARED FOR ASSESSMENT PURPOSES ONLY. NO LIABILITY IS ASSUMED FOR THE ACCURACY OF THE INFORMATION DELINEATED HEREON. ASSESSOR'S PARCELS MAY NOT COMPLY WITH LOCAL LOT SPLIT OR BUILDING SITE ORDINANCES.

FM PG 33 2/28/02  
 ASSESSOR'S MAP  
 BOOK 560 PAGE 66  
 CONTRA COSTA COUNTY, CALIF.

SD 9422  
 532 M 19

132 LSM 47