

MAP NO. 1, SALT MARSH & TIDE LANDS 1872  
 SEC. 19 & 30, T1N, R4W M.D.B. & M.  
 1- 147 P. M. 16 06-19-90

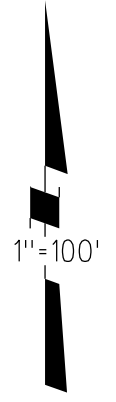
A- 1996 ROLL ~~TRACT 7636~~ M.B. 379-24 (BAYFRONT AT MARINA BAY UNIT NO. 1)

B- 1996 ROLL ~~TRACT 7910~~ M.B. 380-21 (BAYFRONT AT MARINA BAY UNIT NO. 2)

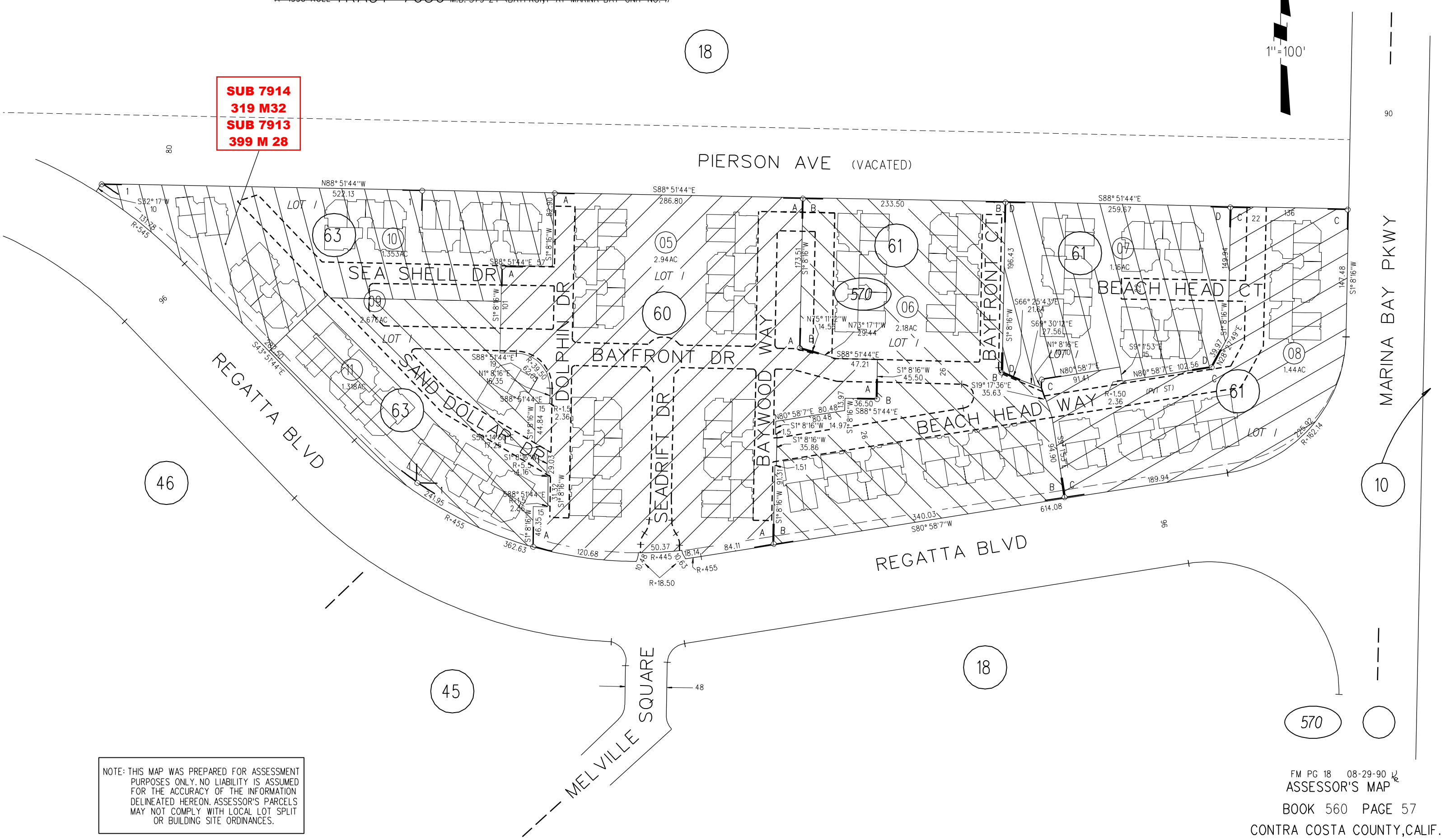
C- 1996 ROLL ~~TRACT 7911~~ M.B. 380-25 (BAYFRONT AT MARINA BAY UNIT NO. 3)

D- 1996 ROLL ~~TRACT 7912~~ M.B. 380-29 (BAYFRONT AT MARINA BAY UNIT NO. 4)

18



**SUB 7914**  
**319 M32**  
**SUB 7913**  
**399 M 28**



NOTE: THIS MAP WAS PREPARED FOR ASSESSMENT PURPOSES ONLY. NO LIABILITY IS ASSUMED FOR THE ACCURACY OF THE INFORMATION DELINEATED HEREON. ASSESSOR'S PARCELS MAY NOT COMPLY WITH LOCAL LOT SPLIT OR BUILDING SITE ORDINANCES.