

A- TRACT NO.2 CANAL SUBDIVISION, SCHOOL ADDITION M.B. 6-136
B- TRACT NO.2 CANAL SUBDIVISION, AMENDED MAP M.B. 16-340

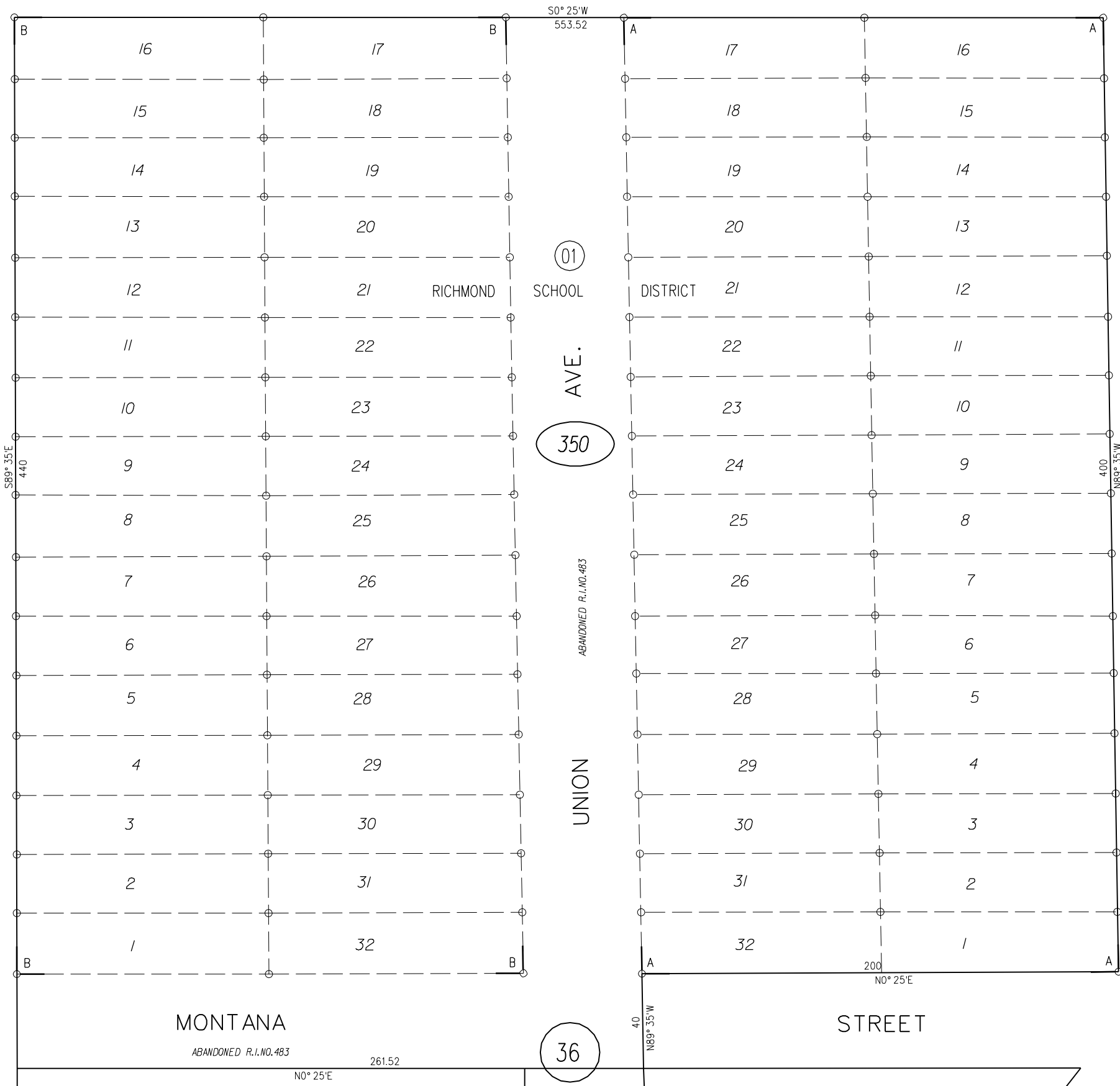
TAX CODE AREA



WINE

31

STREET



BLVD.

AVE.

ALVARADO ST.

W RICHMOND

OIL ST.

PB
550

PB
556

350

350

36

MONTANA

ABANDONED R.I. NO. 483

261.52

N0° 25' E

STREET

N0° 25' E

FM. 131/2 1-10-58 G.C.C.

CONTRA COSTA COUNTY, CALIF.

ASSESSOR'S MAP
BOOK 560 PAGE 35