

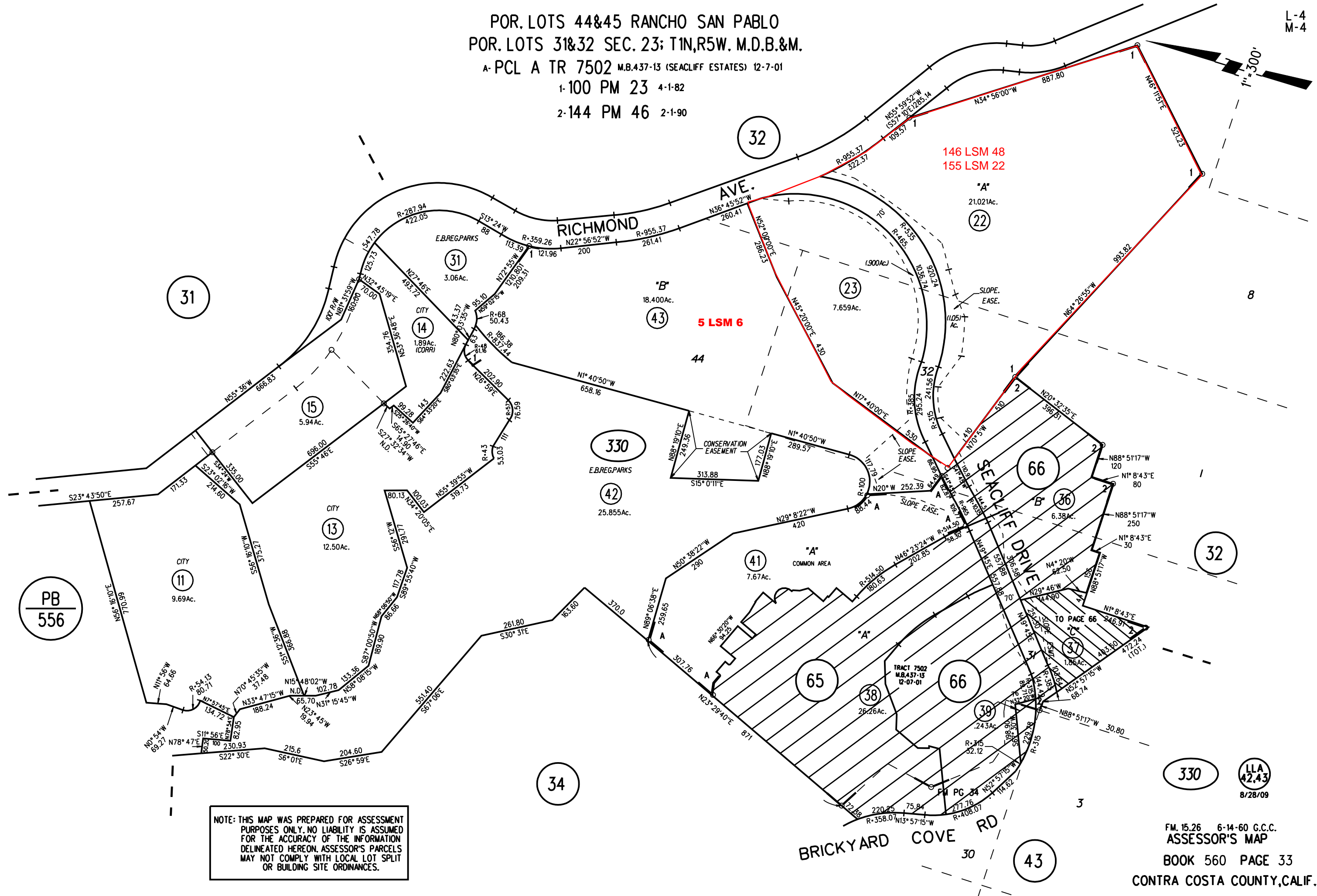
POR. LOTS 44&45 RANCHO SAN PABLO
 POR. LOTS 31&32 SEC. 23; T1N,R5W. M.D.B.&M.

A- PCL A TR 7502 M.B.437-13 (SEACLIFF ESTATES) 12-7-01

1-100 PM 23 4-1-82

2-144 PM 46 2-1-90

L-4
 M-4



PB
 556

NOTE: THIS MAP WAS PREPARED FOR ASSESSMENT PURPOSES ONLY. NO LIABILITY IS ASSUMED FOR THE ACCURACY OF THE INFORMATION DELINEATED HEREON. ASSESSOR'S PARCELS MAY NOT COMPLY WITH LOCAL LOT SPLIT OR BUILDING SITE ORDINANCES.

330 LLA
 42.43
 8/28/09