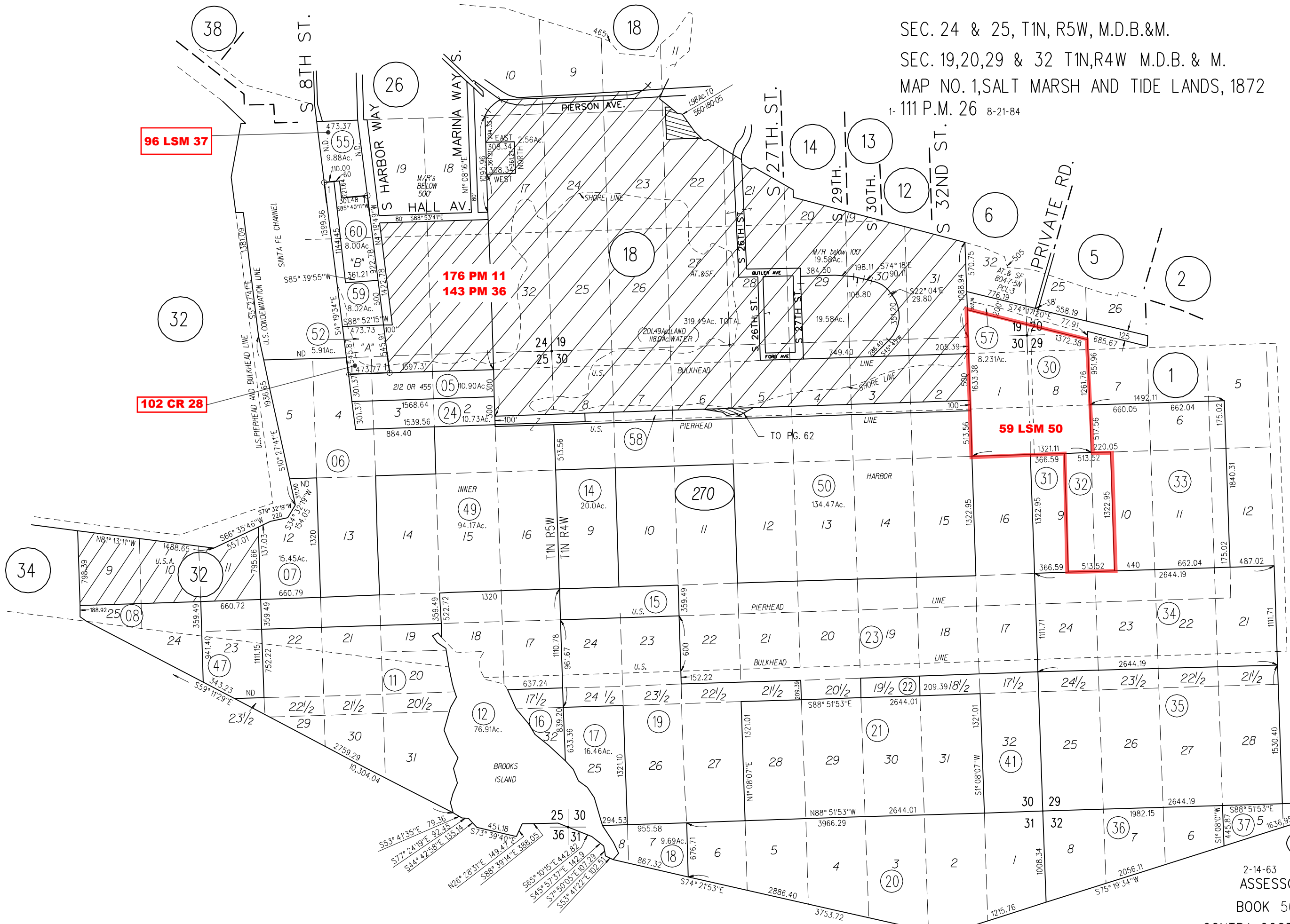
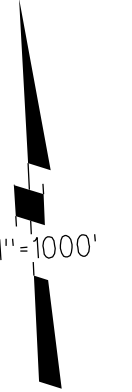


SEC. 24 & 25, T1N, R5W, M.D.B.&M.

SEC. 19,20,29 & 32 T1N,R4W M.D.B. & M.

MAP NO. 1,SALT MARSH AND TIDE LANDS, 1872

1- 111 P.M. 26 8-21-84



2-14-63
ASSESSOR'S MAP
BOOK 560 PAGE 27

FM. 1528,1529,1531,1532,1533,1534 RRB CONTRA COSTA COUNTY,CALIF.