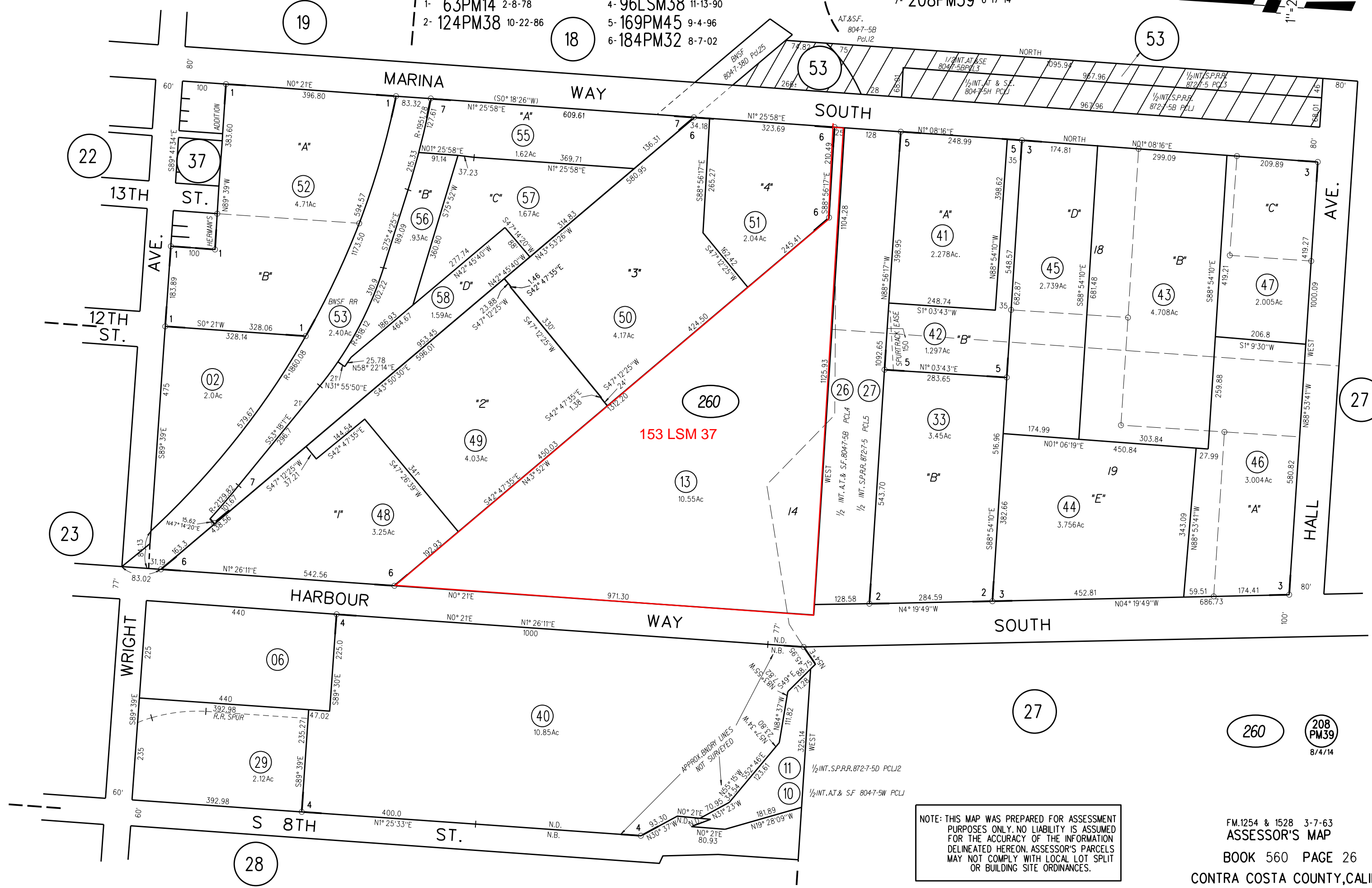
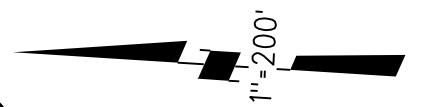


POR SEC 24, T1N R5W MDB&M
 1- 63PM14 2-8-78 4- 96LSM38 11-13-90
 2- 124PM38 10-22-86 5- 169PM45 9-4-96
 6- 184PM32 8-7-02

7- 208PM39 6-17-14



NOTE: THIS MAP WAS PREPARED FOR ASSESSMENT PURPOSES ONLY. NO LIABILITY IS ASSUMED FOR THE ACCURACY OF THE INFORMATION DELINEATED HEREON. ASSESSOR'S PARCELS MAY NOT COMPLY WITH LOCAL LOT SPLIT OR BUILDING SITE ORDINANCES.

FM.1254 & 1528 3-7-63
 ASSESSOR'S MAP
 BOOK 560 PAGE 26
 CONTRA COSTA COUNTY, CALIF.

208 PM39
 8/4/14