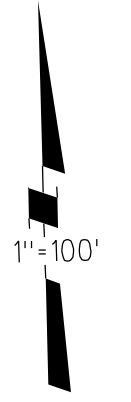
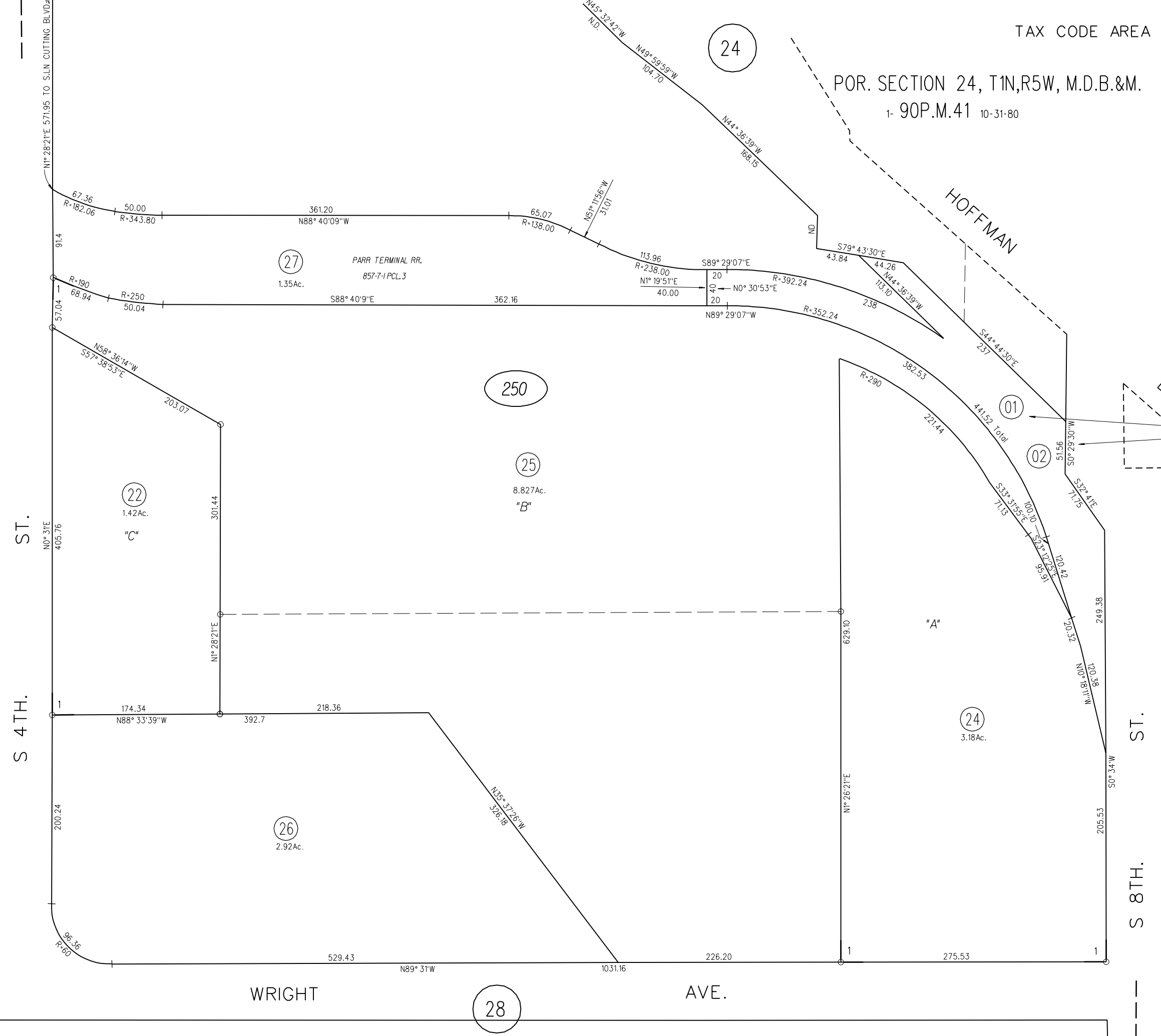


POR. SECTION 24, T1N,R5W, M.D.B.&M.

1- 90P.M.41 10-31-80



38



S.P.R.R. 1/2 INT. 872-7-5E PCL.5
A.T. & S.F. 1/2 INT. 804-7-5Y PCL.5

HERMAN AVE.

S 8TH ST.

S 4TH ST.

WRIGHT AVE.

FM. 1253
ASSESSOR'S MAP
BOOK 560 PAGE 25
CONTRA COSTA COUNTY, CALIF.
2-25-58 G.C.C.