

MAP NO. 1, SALT MARSH & TIDE LANDS 1872

SEC 24&25 T1N R4W MDB&M

SEC 19&30 T1N R4W MDB&M

A- AMD MAP MEEKER'S ADD TO POINT RICHMOND M.B.1-9

B- MAP OF HARBOR BUSINESS BLOCKS M.B. 9-213

C- J.C. OWENS ADDITION TO CITY OF RICHMOND M.B. 6-138

D- HARBOR GATE M.B. 8-191

E- TRACT 6041 M.B. 263-40, MARINA BAY-UNIT NO. 1

F-1988 ROLL TRACT 6627 M.B. 319-39 "MARINA COVE"

G-1992 ROLL- TRACT 6835 M.B.360-10

H-1992 ROLL- TRACT 7683 M.B.360-13

I-1993 ROLL- TRACT 7753 M.B.365-1

J-1993 ROLL- TRACT 7752 M.B.365-6

2- 120PM46 2-3-86

3- 123PM41 8-22-86

4- 126PM1 1-8-87

6- 142PM36 10-03-89

7- 147PM18 10-19-90

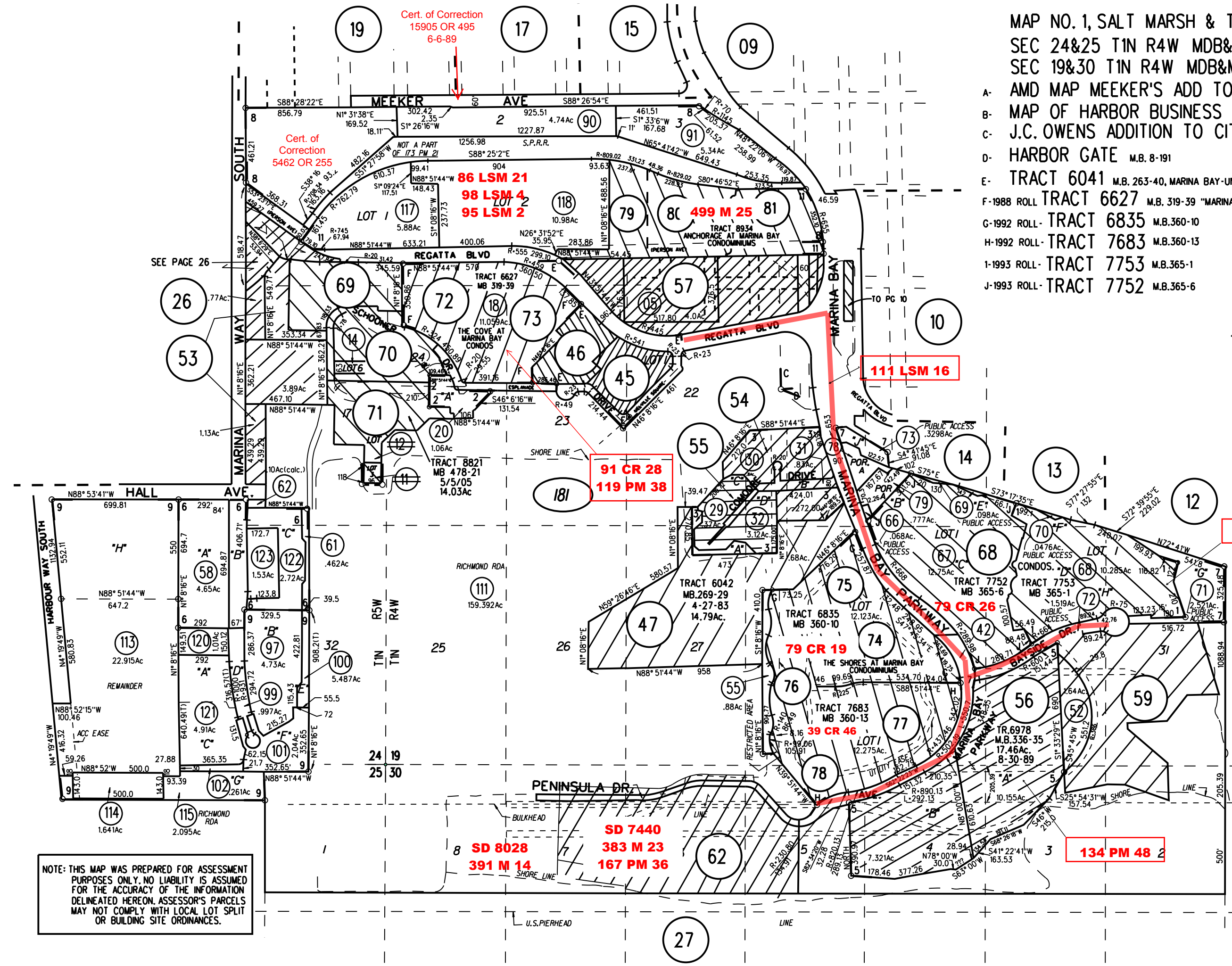
8- 173PM21 2-3-98

9- 176PM11 12-29-98

10- 182PM38 12-24-01

11- 195PM26 12-14-05

1"=500'



NOTE: THIS MAP WAS PREPARED FOR ASSESSMENT PURPOSES ONLY. NO LIABILITY IS ASSUMED FOR THE ACCURACY OF THE INFORMATION DELINEATED HEREON. ASSESSOR'S PARCELS MAY NOT COMPLY WITH LOCAL LOT SPLIT OR BUILDING SITE ORDINANCES.

SEE LEVEL 6I FOR MARINA LEASES

FM 560-18&27 4/21/72
ASSESSOR'S MAP

BOOK 560 PAGE 18-A
CONTRA COSTA COUNTY,CALIF.