

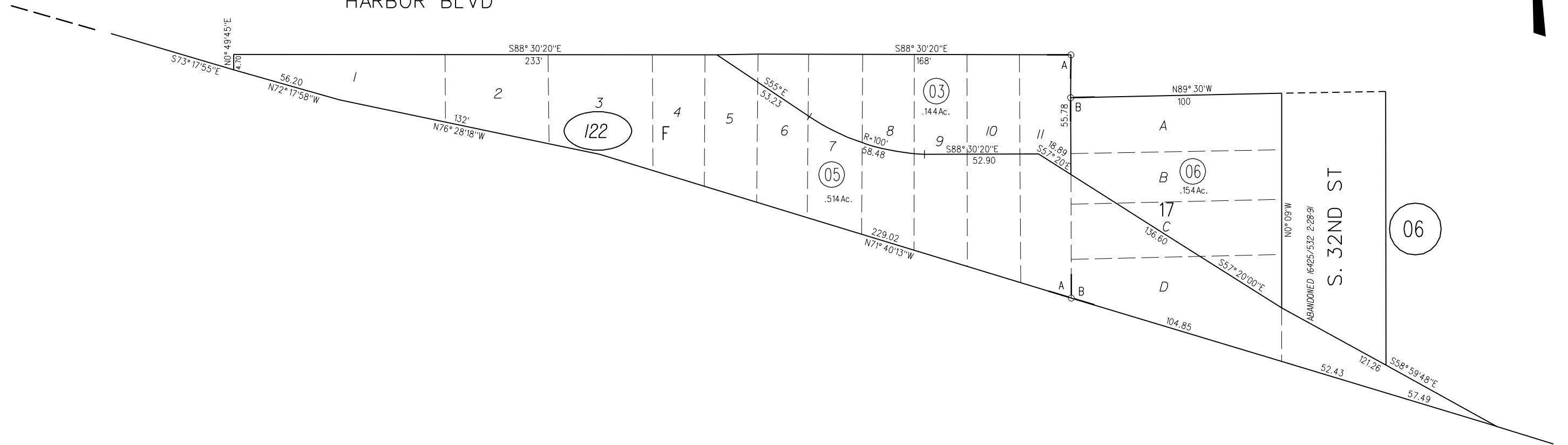
A- HARBOR GATE MB 8-191

B- INNER HARBOR BUSSINESS BLOCKS MB 8-196



11

HARBOR BLVD



122

11-15-90 5-22-91
FM 147/50,81,88

ASSESSOR'S MAP

BOOK 560 PAGE 12

12-3-58 GCC 6-4-81 LEM CONTRA COSTA COUNTY, CALIF.