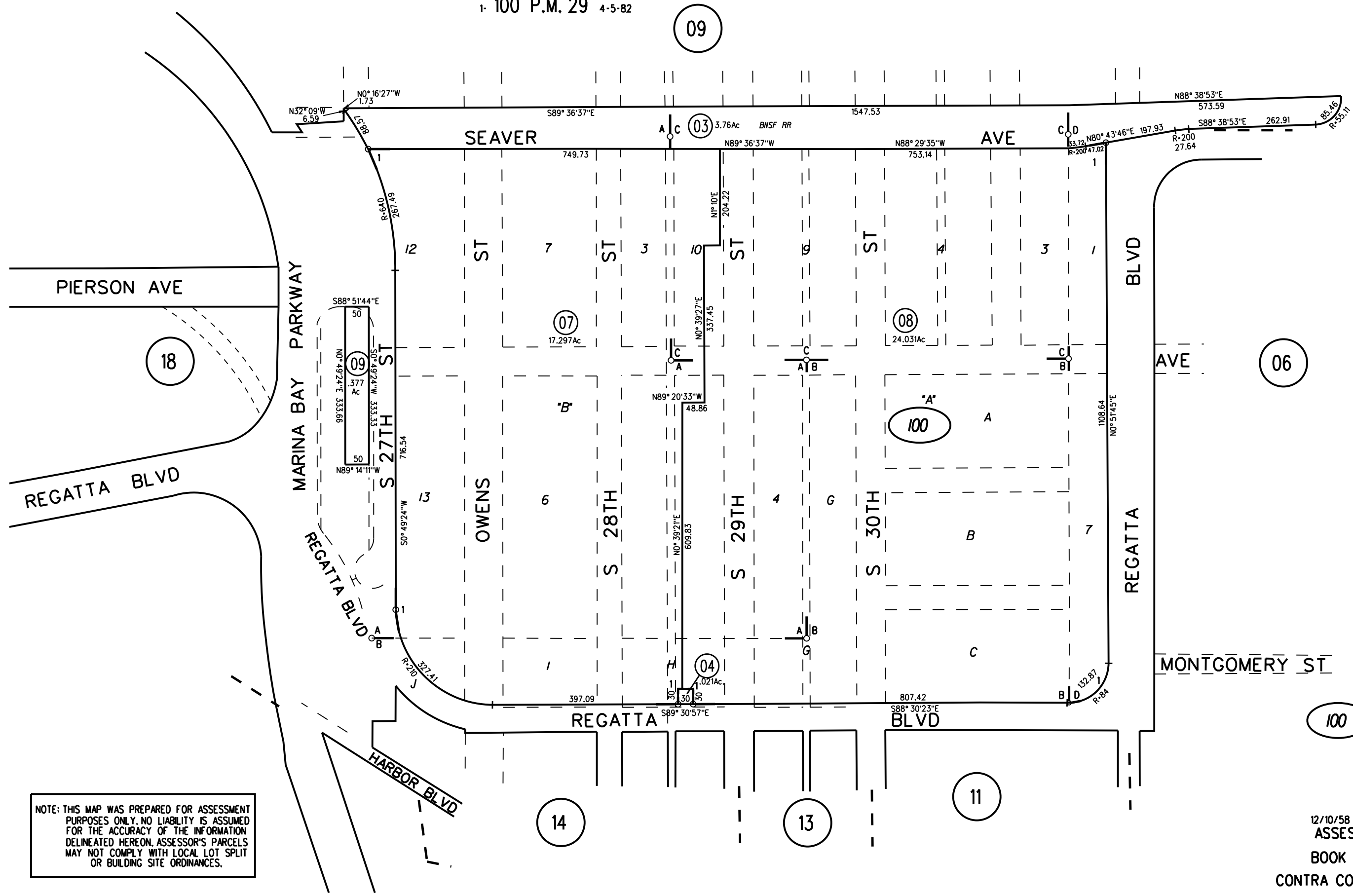


A- J.C. OWENS ADDITION TO CITY OF RICHMOND M.B. 6-138  
 B- HARBORGATE M.B. 8-191  
 C- ROBERT SEAVER ADDITION TO RICHMOND M.B. 2-32  
 D- INNER HARBOR BUSINESS BLOCKS M.B. 8-196  
 1- 100 P.M. 29 4-5-82



NOTE: THIS MAP WAS PREPARED FOR ASSESSMENT PURPOSES ONLY. NO LIABILITY IS ASSUMED FOR THE ACCURACY OF THE INFORMATION DELINEATED HEREON. ASSESSOR'S PARCELS MAY NOT COMPLY WITH LOCAL LOT SPLIT OR BUILDING SITE ORDINANCES.