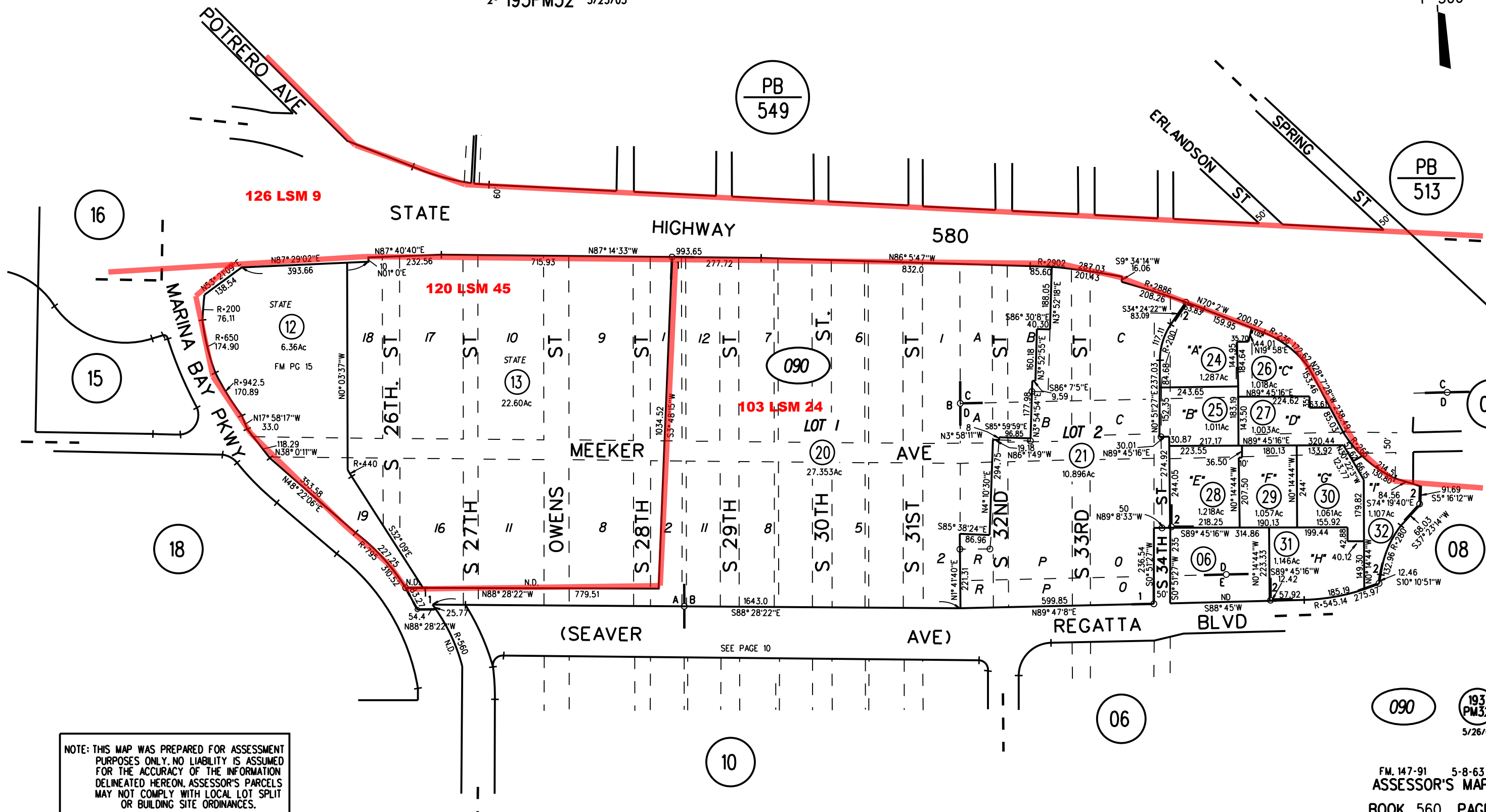


- A- JC OWENS ADDITION TO CITY OF RICHMOND MB 6-138
- B- ROBERT SEAVER ADDITION TO CITY OF RICHMOND MB 2-32
- C- SYNDICATE BUSINESS BLOCKS MB 5-107
- D- SYNDICATE TRACT MB 6-143
- E- INNER HARBOR BUSINESS BLOCKS MB 8-196
- F- POR BLOCK 3, HARBOR BUSINESS BLOCKS MB 9-213
- 1- 175PM45 12/16/98
- 2- 193PM32 5/25/05



NOTE: THIS MAP WAS PREPARED FOR ASSESSMENT PURPOSES ONLY. NO LIABILITY IS ASSUMED FOR THE ACCURACY OF THE INFORMATION DELINEATED HEREON. ASSESSOR'S PARCELS MAY NOT COMPLY WITH LOCAL LOT SPLIT OR BUILDING SITE ORDINANCES.