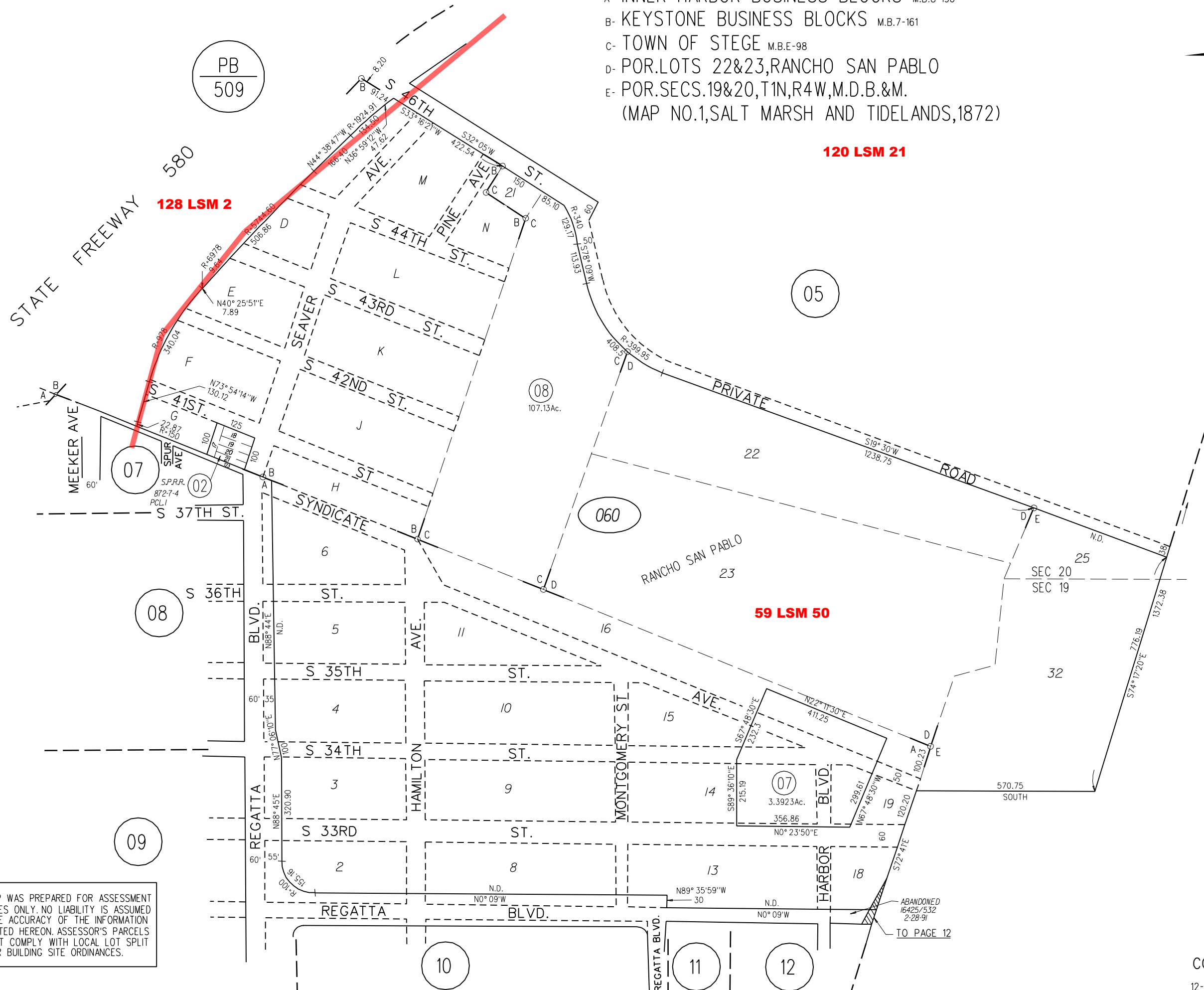


- A- INNER HARBOR BUSINESS BLOCKS M.B.8-196
- B- KEYSTONE BUSINESS BLOCKS M.B.7-161
- C- TOWN OF STEGE M.B.E-98
- D- POR.LOTS 22&23,RANCHO SAN PABLO
- E- POR.SEC.19&20,T1N,R4W,M.D.B.&M.
(MAP NO.1,SALT MARSH AND TIDELANDS,1872)



NOTE: THIS MAP WAS PREPARED FOR ASSESSMENT PURPOSES ONLY. NO LIABILITY IS ASSUMED FOR THE ACCURACY OF THE INFORMATION DELINEATED HEREON. ASSESSOR'S PARCELS MAY NOT COMPLY WITH LOCAL LOT SPLIT OR BUILDING SITE ORDINANCES.