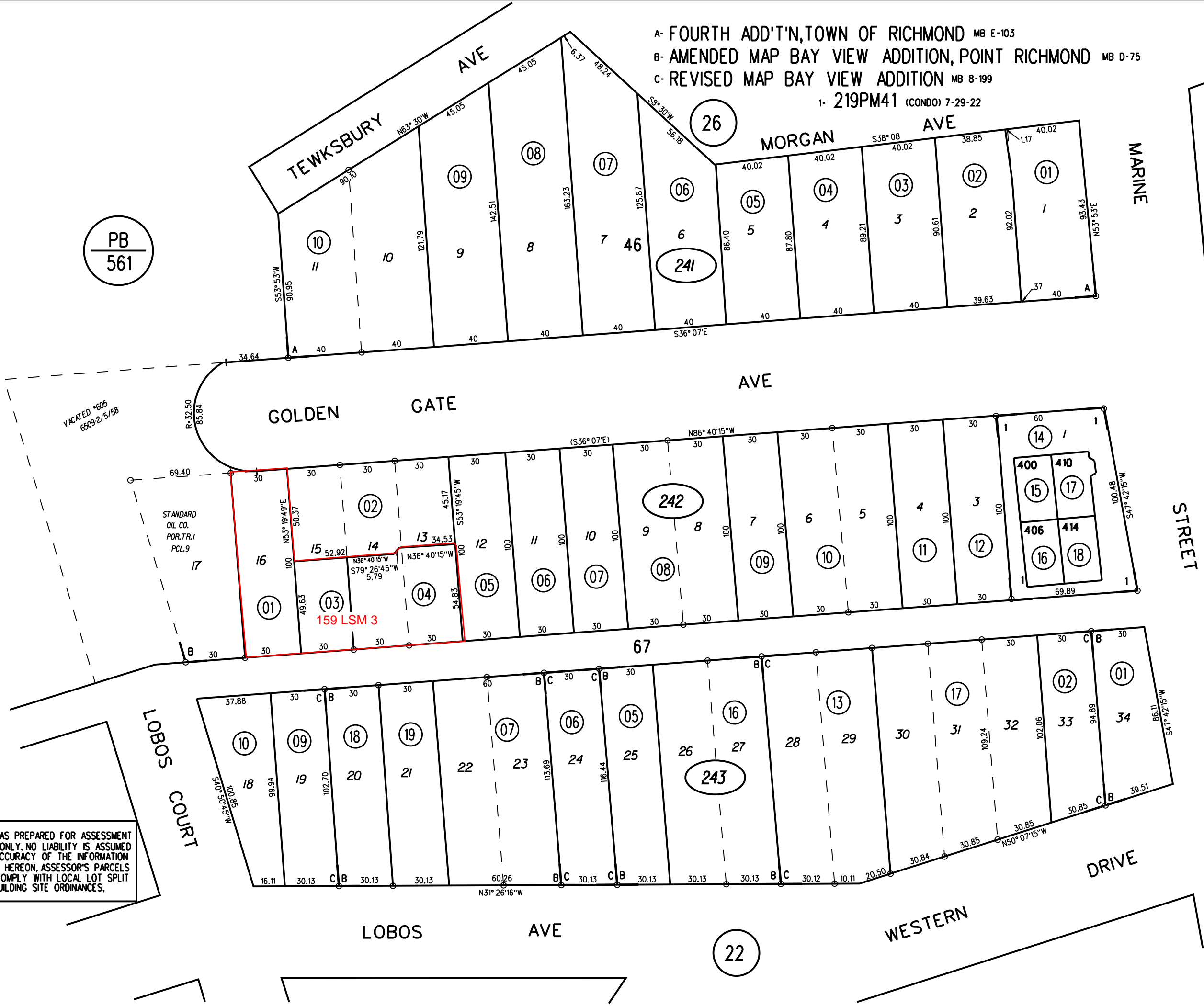
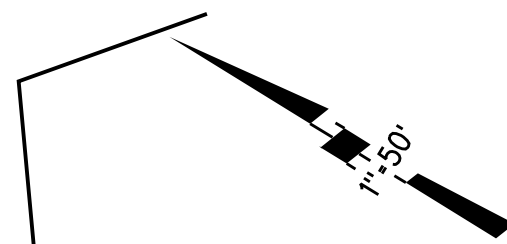


A- FOURTH ADD'T'N, TOWN OF RICHMOND MB E-103
 B- AMENDED MAP BAY VIEW ADDITION, POINT RICHMOND MB D-75
 C- REVISED MAP BAY VIEW ADDITION MB 8-199
 1- 219PM41 (CONDO) 7-29-22

PB
561



VACATED #605
6509-2/5/58

STANDARD
OIL CO.
POR. TR. 1
PCL. 9

NOTE: THIS MAP WAS PREPARED FOR ASSESSMENT PURPOSES ONLY. NO LIABILITY IS ASSUMED FOR THE ACCURACY OF THE INFORMATION DELINEATED HEREON. ASSESSOR'S PARCELS MAY NOT COMPLY WITH LOCAL LOT SPLIT OR BUILDING SITE ORDINANCES.

25

241

242

243

14-18
(CONDO)
11/3/22

19
11/14/06

FM.130/40.54 1963 ROLL
ASSESSOR'S MAP
BOOK 558 PAGE 24
CONTRA COSTA COUNTY, CALIF.
12-19-57G.C.C. Sanborn Date : 01/06/1999