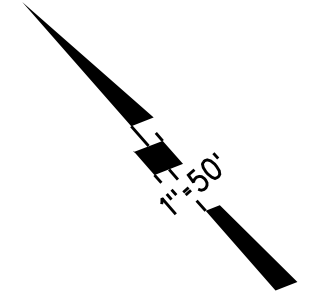
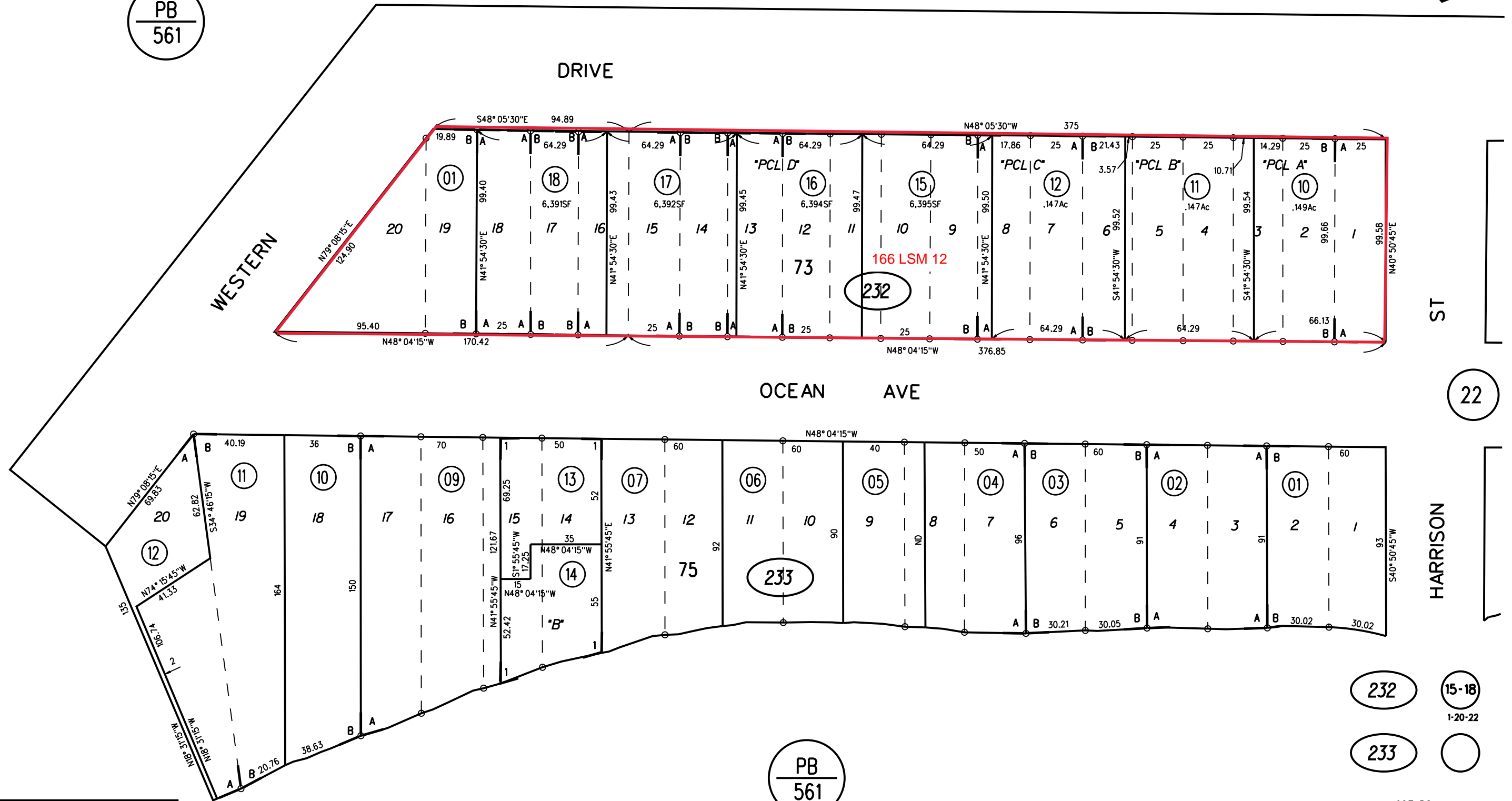


A BAY VIEW ADDITION, AMENDED MAP POINT RICHMOND M B D-75
 B REVISED MAP BAY VIEW ADDITION M B 8-199
 1 175 PM 48 12-18-98



PB
561



PB
561

NOTE: THIS MAP WAS PREPARED FOR ASSESSMENT PURPOSES ONLY. NO LIABILITY IS ASSUMED FOR THE ACCURACY OF THE INFORMATION DELINEATED HEREON. ASSESSOR'S PARCELS MAY NOT COMPLY WITH LOCAL LOT SPLIT OR BUILDING SITE ORDINANCES.

232 15-18
1-20-22
233

1963 ROLL
 ASSESSOR'S MAP
 BOOK 558 PAGE 23
 130-58 & 59 CONTRA COSTA COUNTY, CALIF.
 Sanborn Date : 01/06/1999