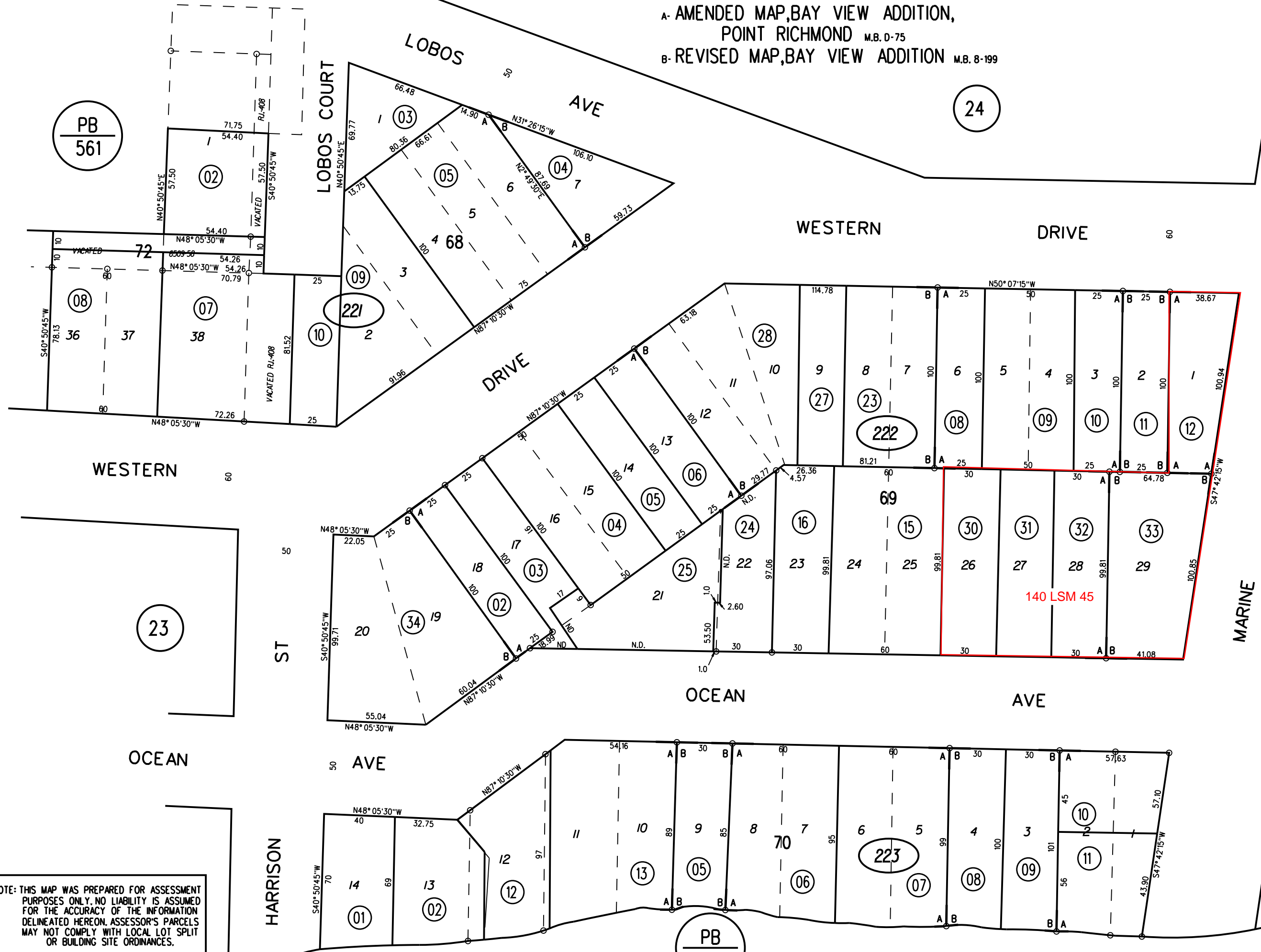
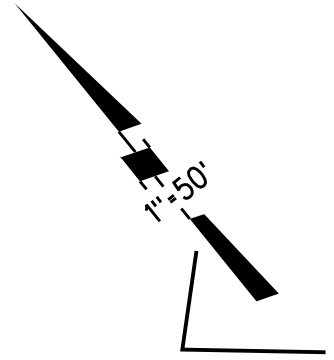


A- AMENDED MAP, BAY VIEW ADDITION,  
 POINT RICHMOND M.B. D-75  
 B- REVISED MAP, BAY VIEW ADDITION M.B. 8-199



PB  
561

24

23

21

PB  
561

NOTE: THIS MAP WAS PREPARED FOR ASSESSMENT PURPOSES ONLY. NO LIABILITY IS ASSUMED FOR THE ACCURACY OF THE INFORMATION DELINEATED HEREON. ASSESSOR'S PARCELS MAY NOT COMPLY WITH LOCAL LOT SPLIT OR BUILDING SITE ORDINANCES.

- 221 ○
- 222 ○
- 223 ○
- 34 ○

FM.130/55,56,57  
 ASSESSOR'S MAP  
 BOOK 558 PAGE 22