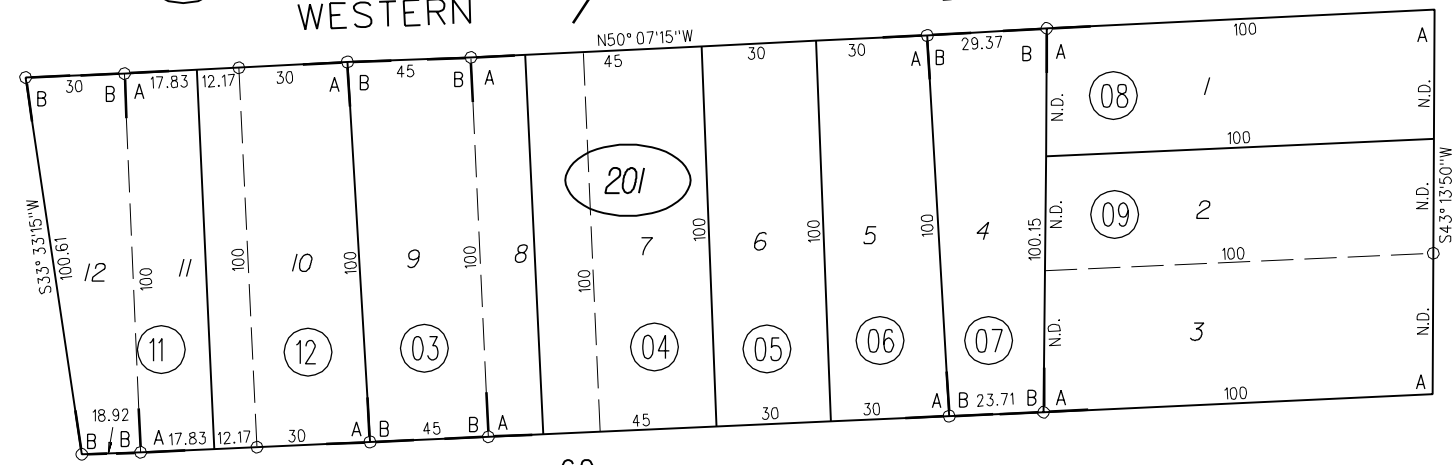


A- AMENDED MAP BAY VIEW ADDITION, POINT RICHMOND M.B. D-75
 B- REVISED MAP BAY VIEW ADDITION M.B.8-199

25

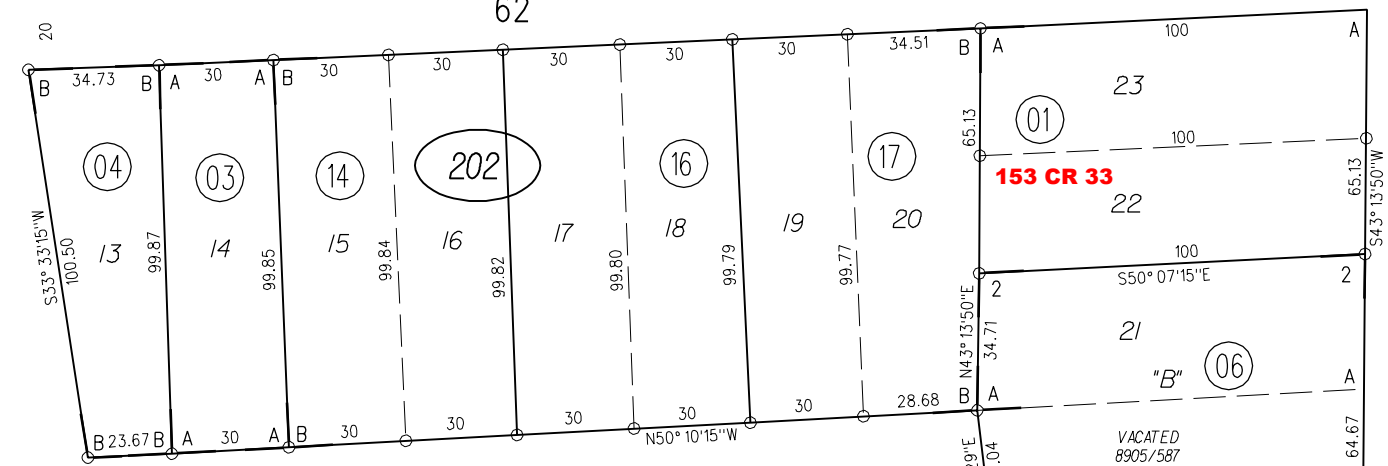
28

WESTERN DR.



201

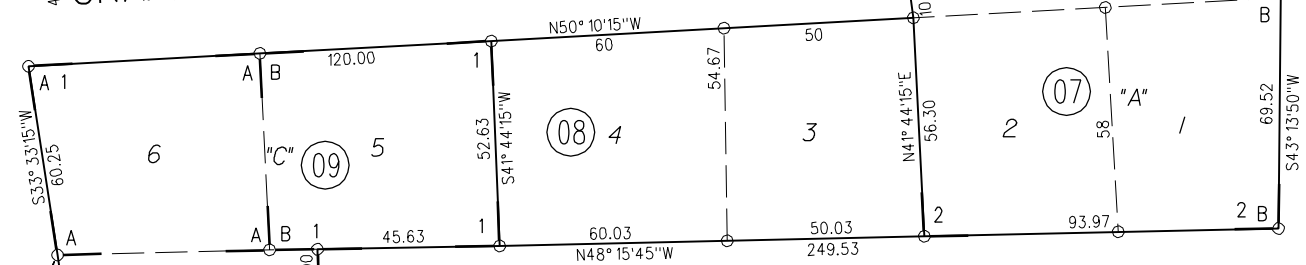
62



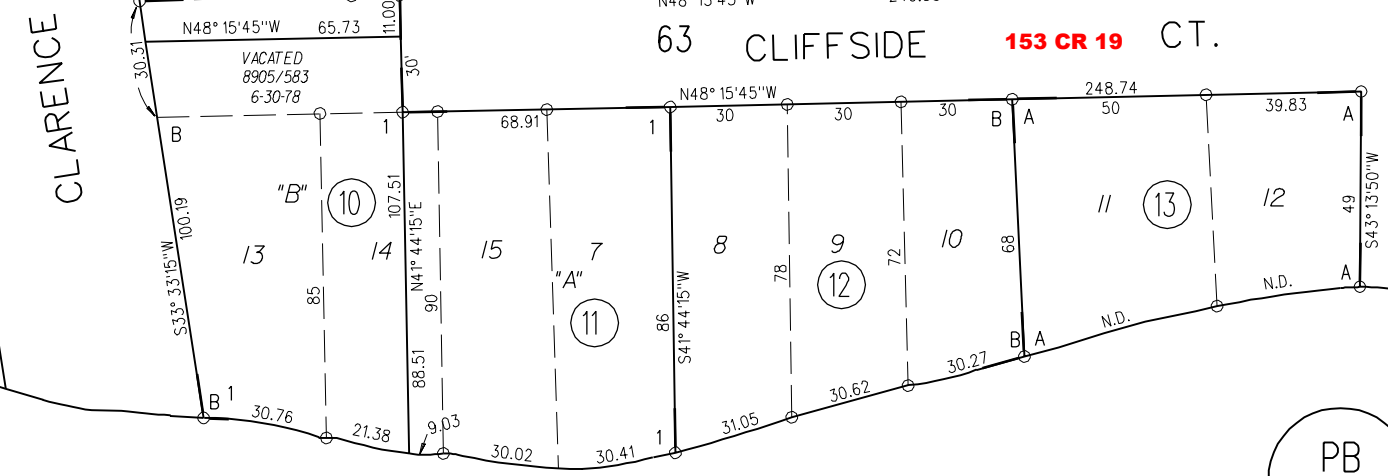
202

153 CR 33

40 GRANDVIEW CT.

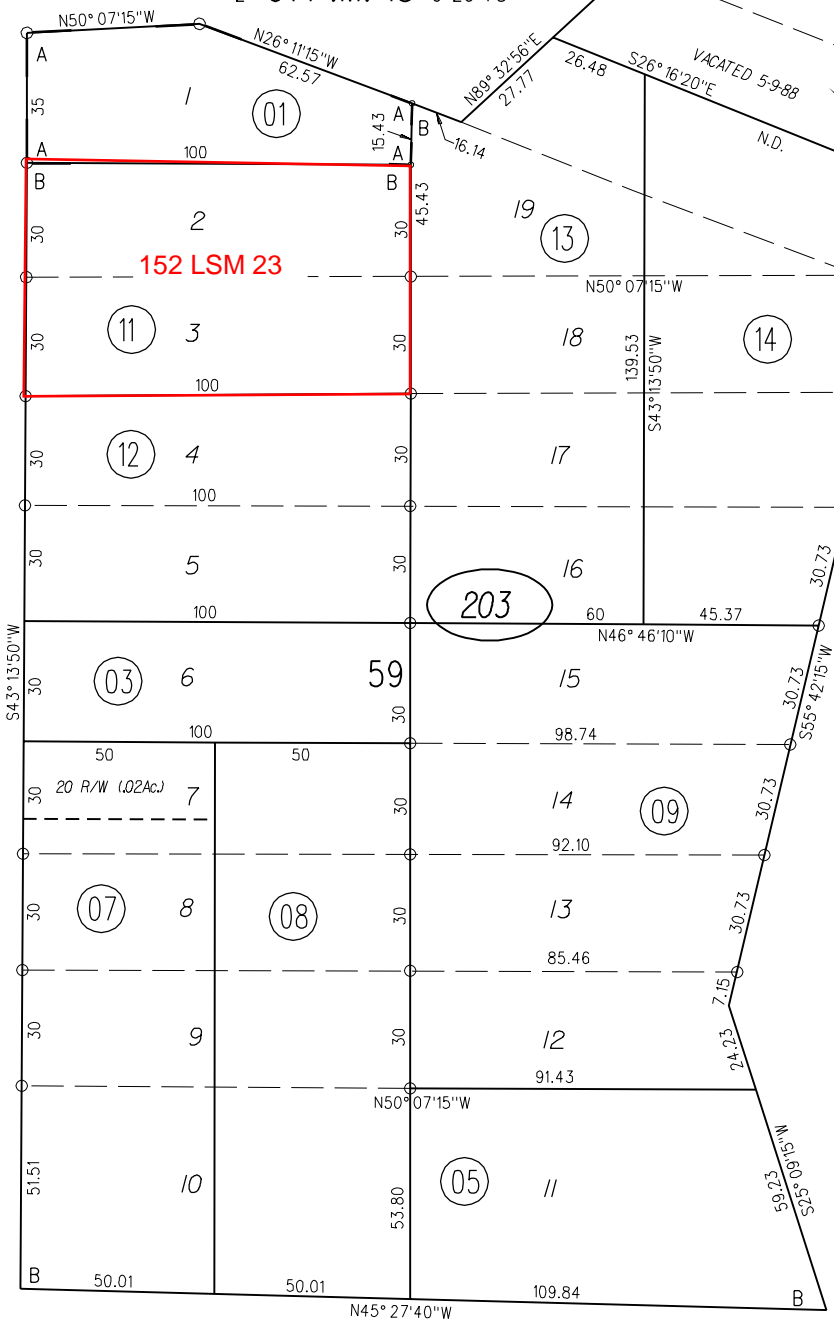


63 CLIFFSIDE 153 CR 19 CT.



PB 561

1- 67P.M.13 & 14 6-26-78
 2- 67P.M. 15 6-26-78



152 LSM 23

203

19

PACIFIC AVE.

BAY AVE.

STREET

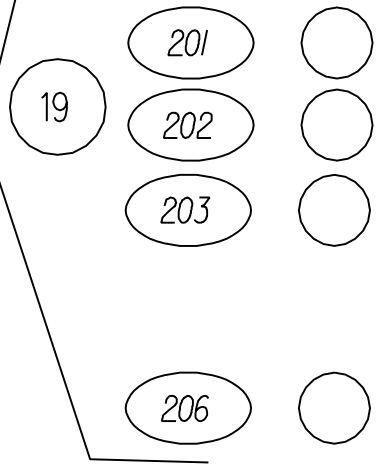
GARFIELD STREET

DRIVE

WESTERN DRIVE

WESTERN DRIVE

DRIVE



1963 ROLL FM.130/45,48,49,50

ASSESSOR'S MAP BOOK 558 PAGE 20

12-13-57 G.C.C. CONTRA COSTA COUNTY,CALIF.