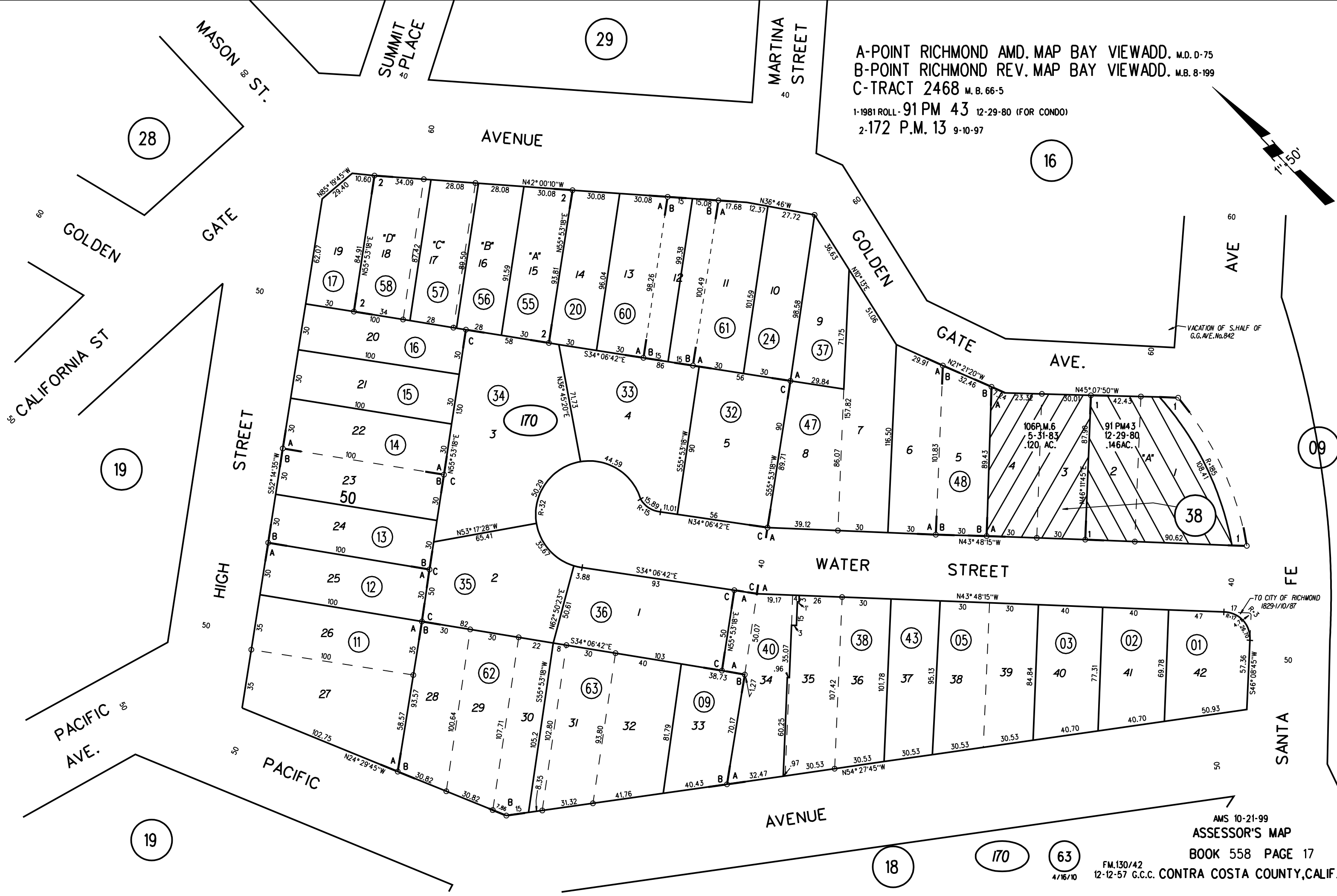
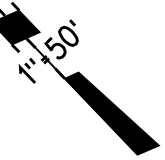


A-POINT RICHMOND AMD. MAP BAY VIEWADD. M.D. D-75
 B-POINT RICHMOND REV. MAP BAY VIEWADD. M.B. 8-199
 C-TRACT 2468 M. B. 66-5

1-1981 ROLL- 91 PM 43 12-29-80 (FOR CONDO)
 2-172 P.M. 13 9-10-97



VACATION OF S. HALF OF G.G.AVE. No. 842

106 P.M. 6
 5-31-83
 .120 AC.

91 P.M. 3
 12-29-80
 .146 AC.

TO CITY OF RICHMOND
 1829-1/10/87

AMS 10-21-99
 ASSESSOR'S MAP
 BOOK 558 PAGE 17

FM.130/42
 12-12-57 G.C.C. CONTRA COSTA COUNTY, CALIF.

19

18

170

63
 4/16/10