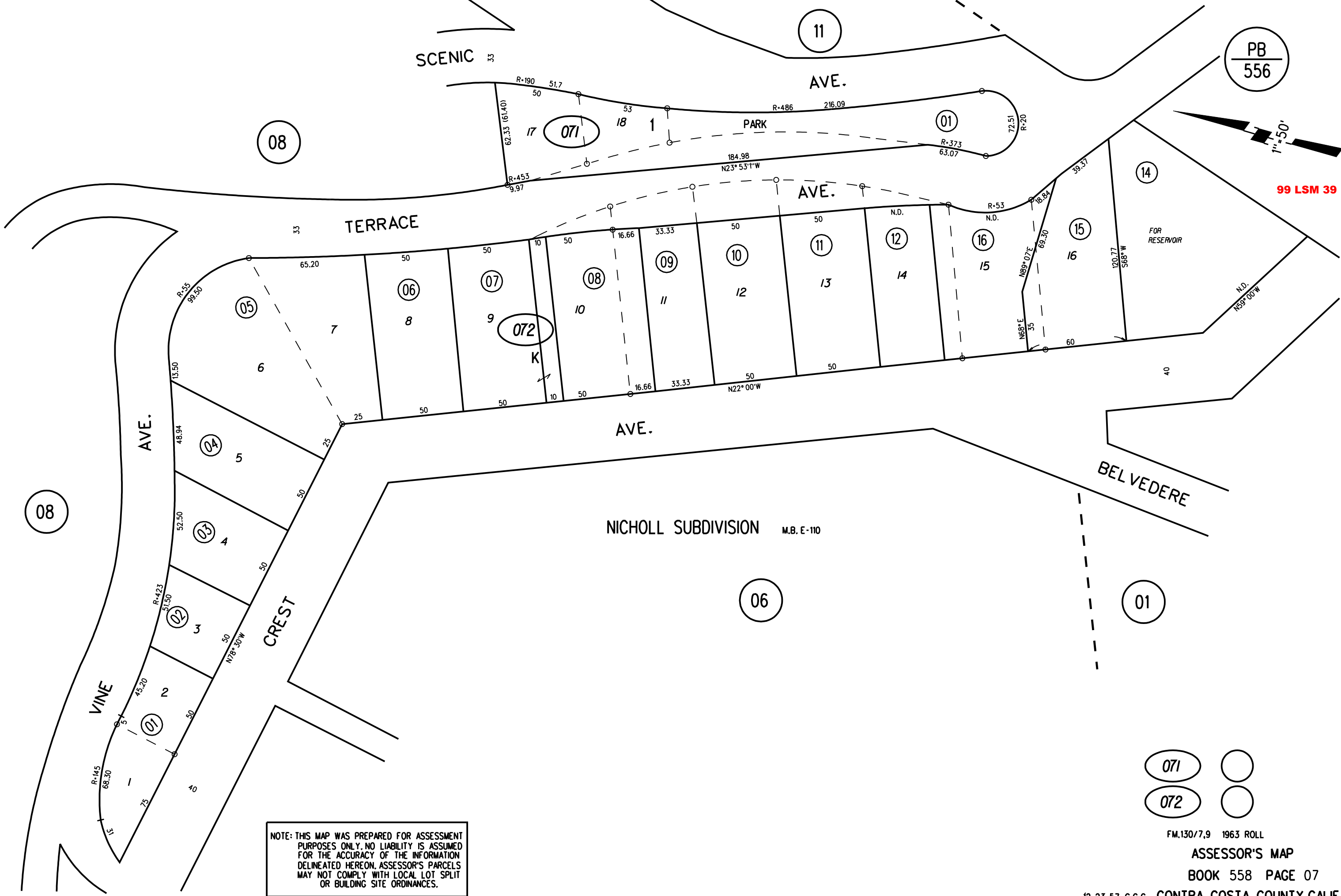


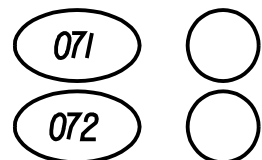
PB
556



99 LSM 39



NOTE: THIS MAP WAS PREPARED FOR ASSESSMENT PURPOSES ONLY. NO LIABILITY IS ASSUMED FOR THE ACCURACY OF THE INFORMATION DELINEATED HEREON. ASSESSOR'S PARCELS MAY NOT COMPLY WITH LOCAL LOT SPLIT OR BUILDING SITE ORDINANCES.



FM.130/7,9 1963 ROLL

ASSESSOR'S MAP

BOOK 558 PAGE 07

12-23-57 G.C.C. CONTRA COSTA COUNTY, CALIF.

Sanborn Date : 01/06/1999