

NYSTROM'S ADDITION TO POINT RICHMOND M.B. 30 MB - 30b

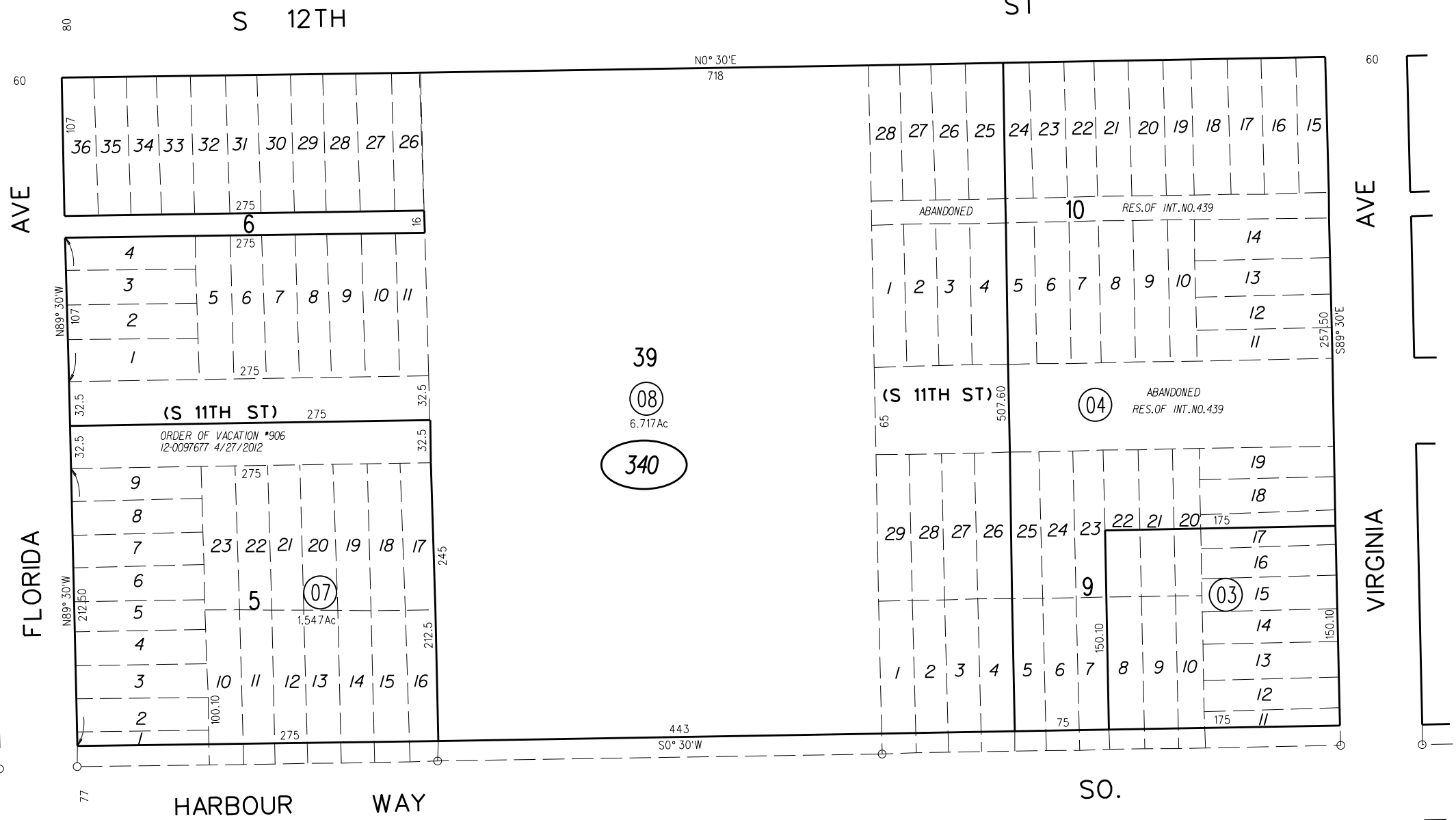
POR. RANCHO SAN PABLO

PB
544



PB
544

33



PB
544

30

340

39
08
6.717Ac

32

31

340

07,08
1/31/14

NOTE: THIS MAP WAS PREPARED FOR ASSESSMENT PURPOSES ONLY. NO LIABILITY IS ASSUMED FOR THE ACCURACY OF THE INFORMATION DELINEATED HEREON. ASSESSOR'S PARCELS MAY NOT COMPLY WITH LOCAL LOT SPLIT OR BUILDING SITE ORDINANCES.