

A- SANTA FE TOWNSITE M.B.E-102
 B- NYSTROM'S ADDITION TO POINT RICHMOND M.B.2-29

31

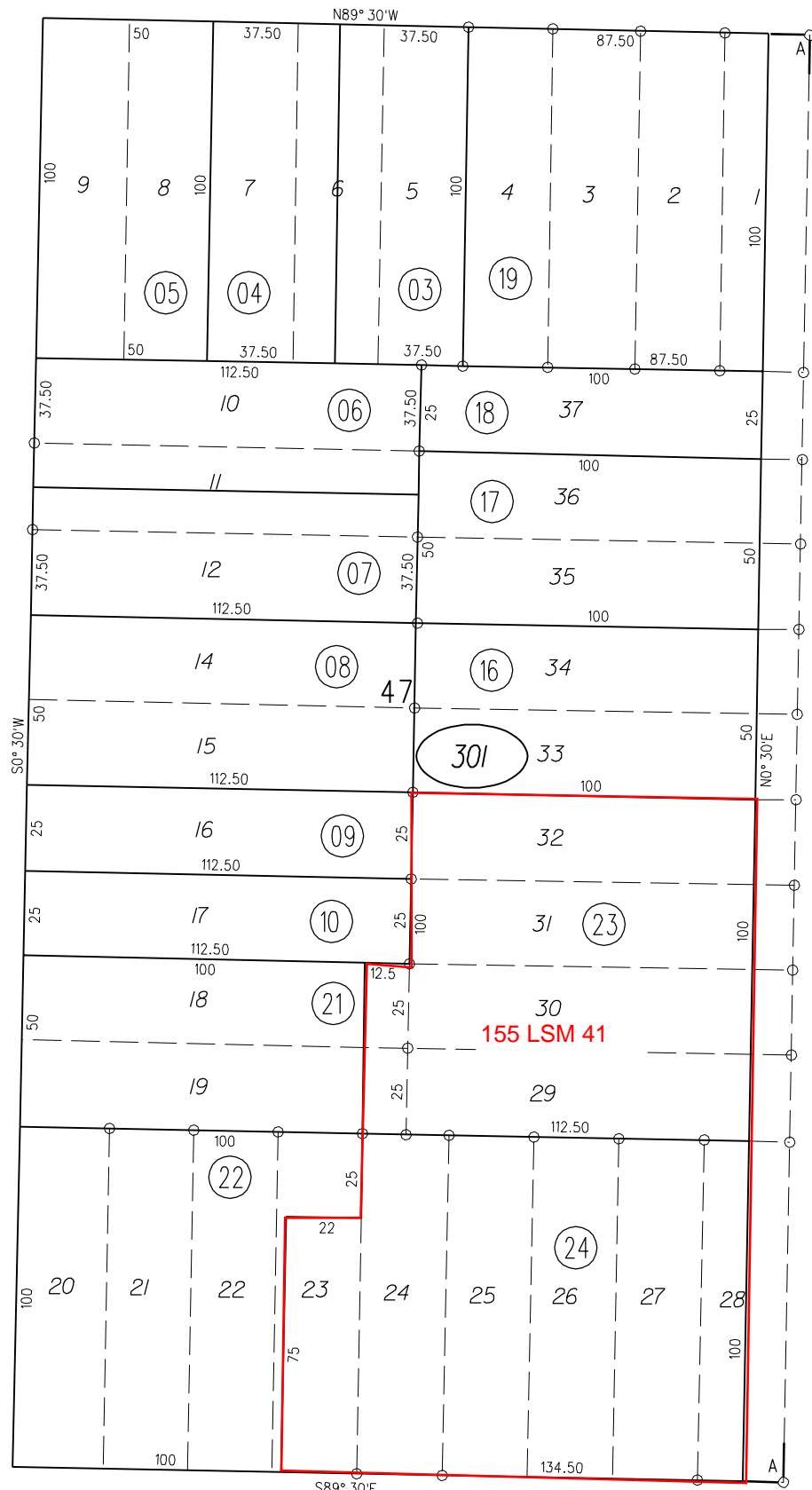
VIRGINIA

34

AVE.

60

ST.



77

SO.

1"=50'

ST.

25

S 9TH

WAY

PB
544

NOTE: THIS MAP WAS PREPARED FOR ASSESSMENT PURPOSES ONLY. NO LIABILITY IS ASSUMED FOR THE ACCURACY OF THE INFORMATION DELINEATED HEREON. ASSESSOR'S PARCELS MAY NOT COMPLY WITH LOCAL LOT SPLIT OR BUILDING SITE ORDINANCES.

110

CUTTING

29

HARBOUR

11TH

301

FM.132/38-61 1-5-59 G. C. C.
 ASSESSOR'S MAP
 BOOK 550 PAGE 30
 CONTRA COSTA COUNTY, CALIF.

BLVD.