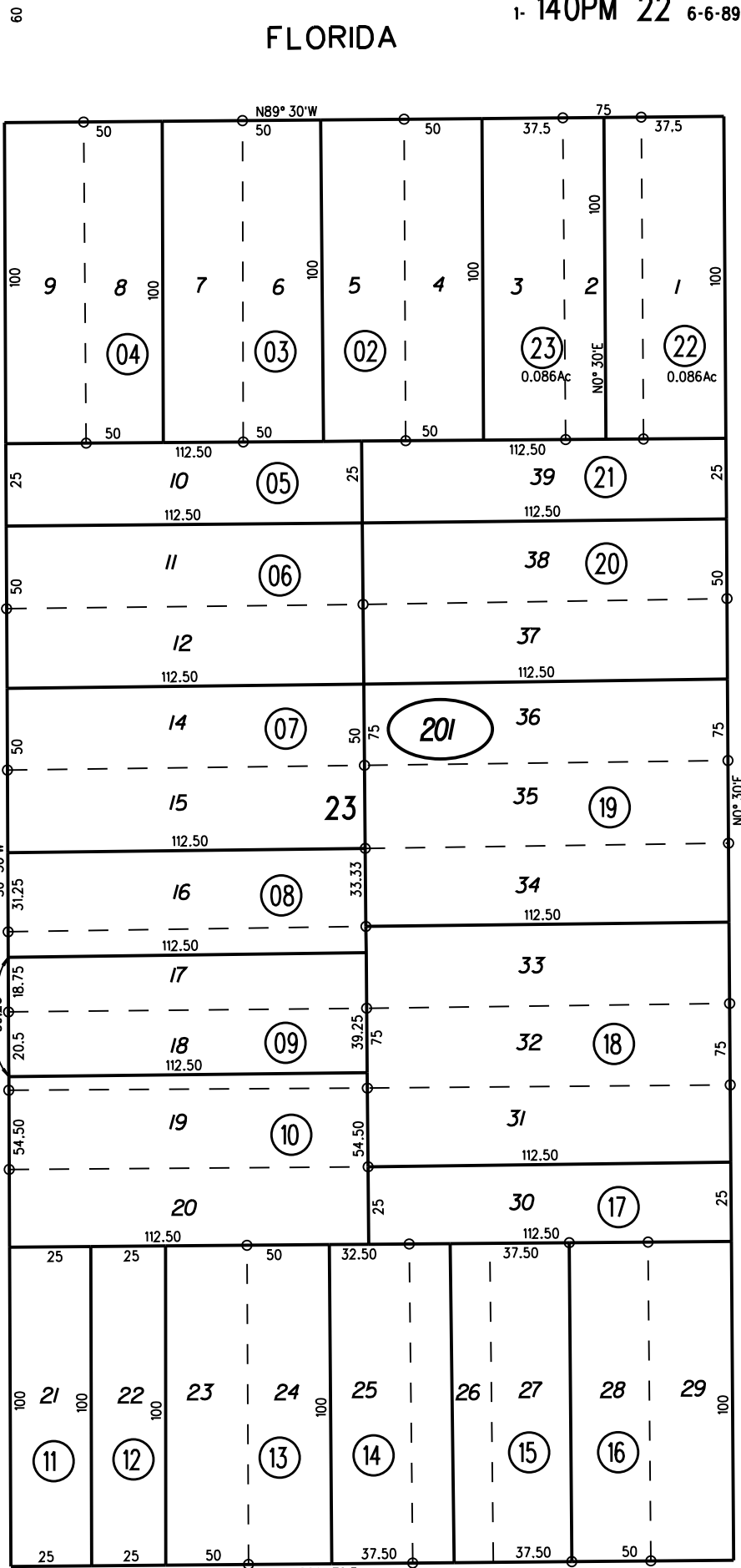


21

FLORIDA

AVE



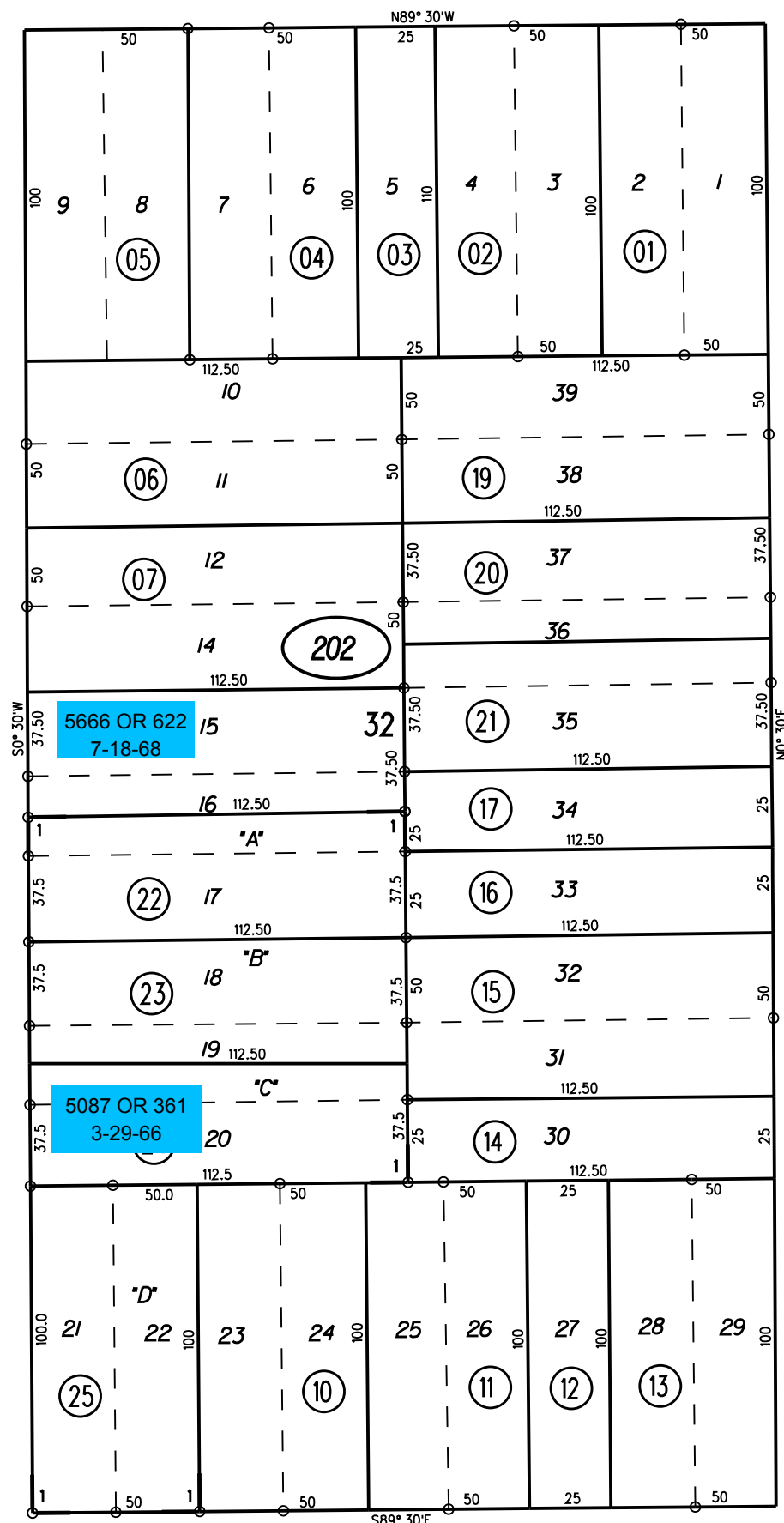
63.34

ST

S 6TH

63.79

19



63.34

ST

S 6TH

63.79

19

1"=50'

23

201

22-23
12-4-18

202

FM. 132/18,23 10-9-58 G.C.C.

ASSESSOR'S MAP

BOOK 550 PAGE 20

CONTRA COSTA COUNTY,CALIF.

NOTE: THIS MAP WAS PREPARED FOR ASSESSMENT PURPOSES ONLY. NO LIABILITY IS ASSUMED FOR THE ACCURACY OF THE INFORMATION DELINEATED HEREON. ASSESSOR'S PARCELS MAY NOT COMPLY WITH LOCAL LOT SPLIT OR BUILDING SITE ORDINANCES.