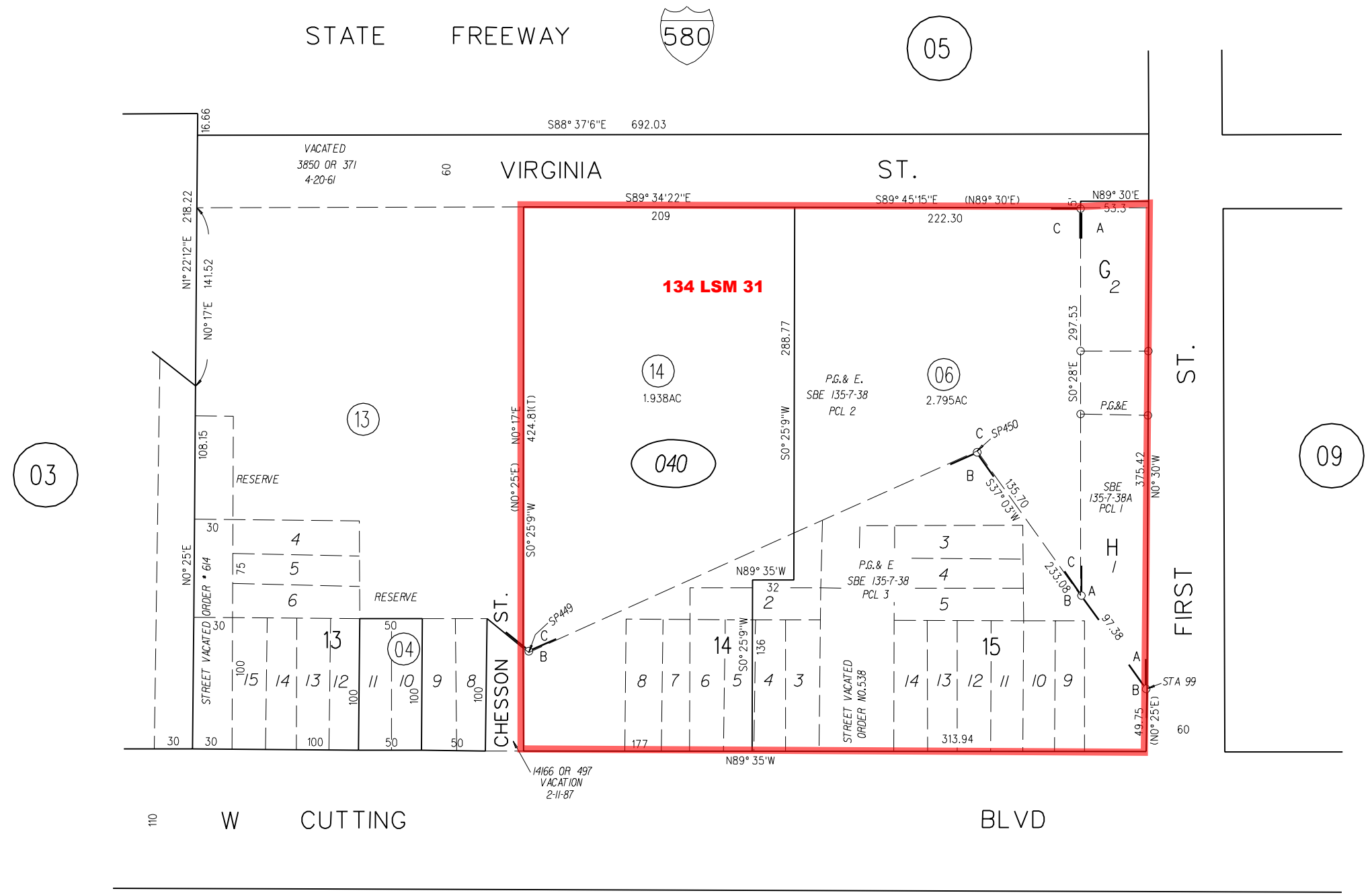
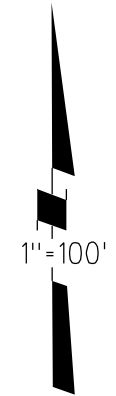


A- SANTA FE TOWNSITE M.B.E-102
 B- CANAL SUBDIVISION M.B. 1-8
 C- POR. RANCHO SAN PABLO



03

040

09

PB
560

040

NOTE: THIS MAP WAS PREPARED FOR ASSESSMENT PURPOSES ONLY. NO LIABILITY IS ASSUMED FOR THE ACCURACY OF THE INFORMATION DELINEATED HEREON. ASSESSOR'S PARCELS MAY NOT COMPLY WITH LOCAL LOT SPLIT OR BUILDING SITE ORDINANCES.

3-24-60 G.C.C.
 FM. 131/60,61 132/4 1101
 ASSESSOR'S MAP
 BOOK 550 PAGE 04
 CONTRA COSTA COUNTY, CALIF.