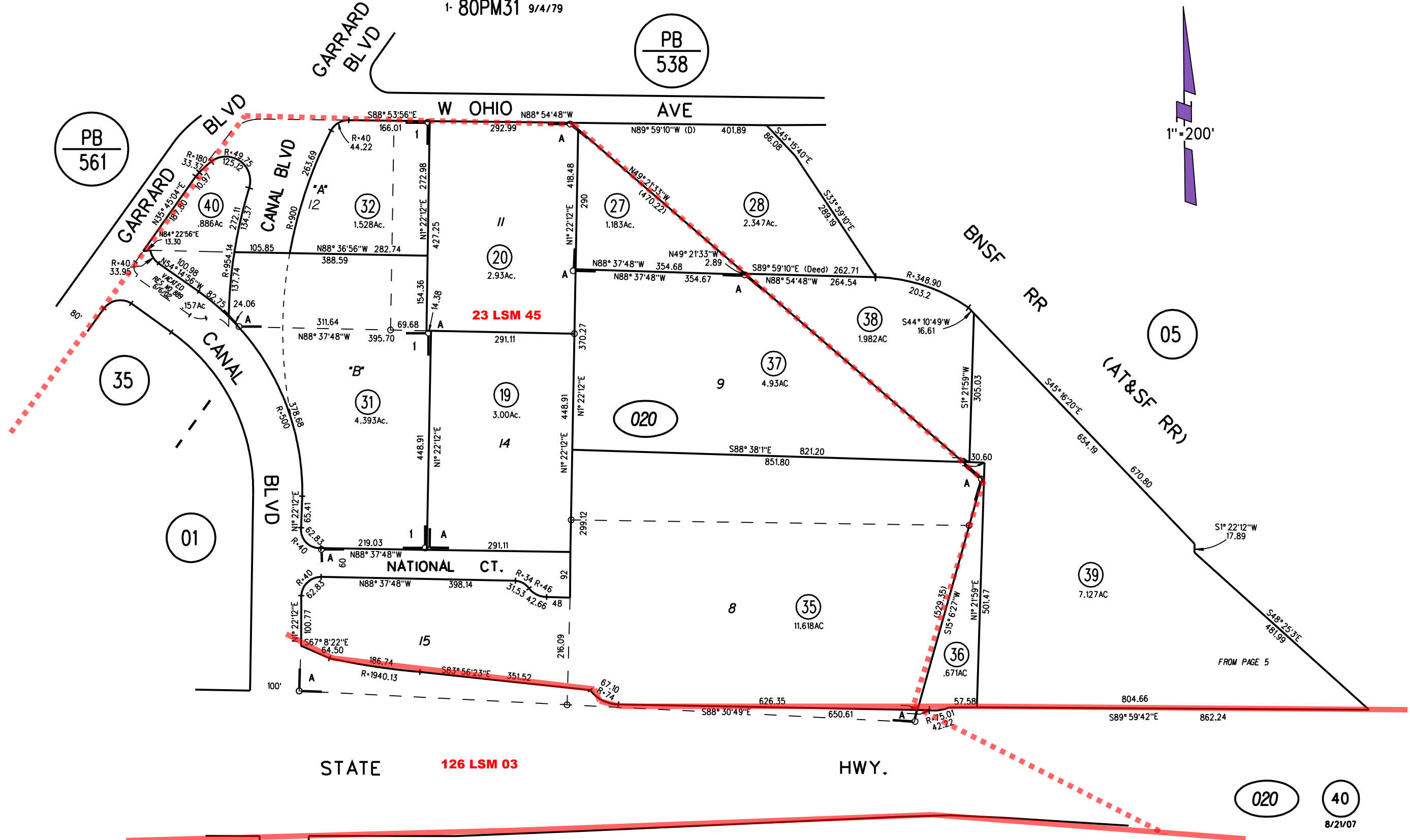


POR RANCHO SAN PABLO

A-1965 ROLL TRACT 2877 MB 98-30 (GALVIN INDUSTRIAL PARK)

1- 80PM31 9/4/79



NOTE: THIS MAP WAS PREPARED FOR ASSESSMENT PURPOSES ONLY. NO LIABILITY IS ASSUMED FOR THE ACCURACY OF THE INFORMATION DELINEATED HEREON. ASSESSOR'S PARCELS MAY NOT COMPLY WITH LOCAL LOT SPLIT OR BUILDING SITE ORDINANCES.