



MARINE AVE. (VACATED)

LADERO AVE. (VACATED)

AVE.

S 27TH ST. (VACATED)

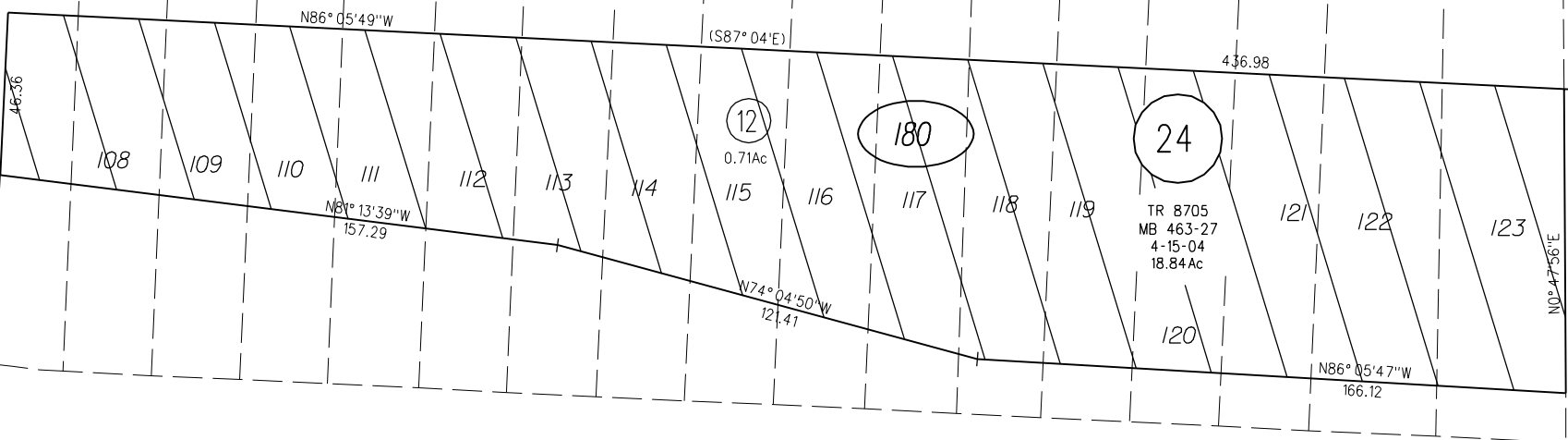
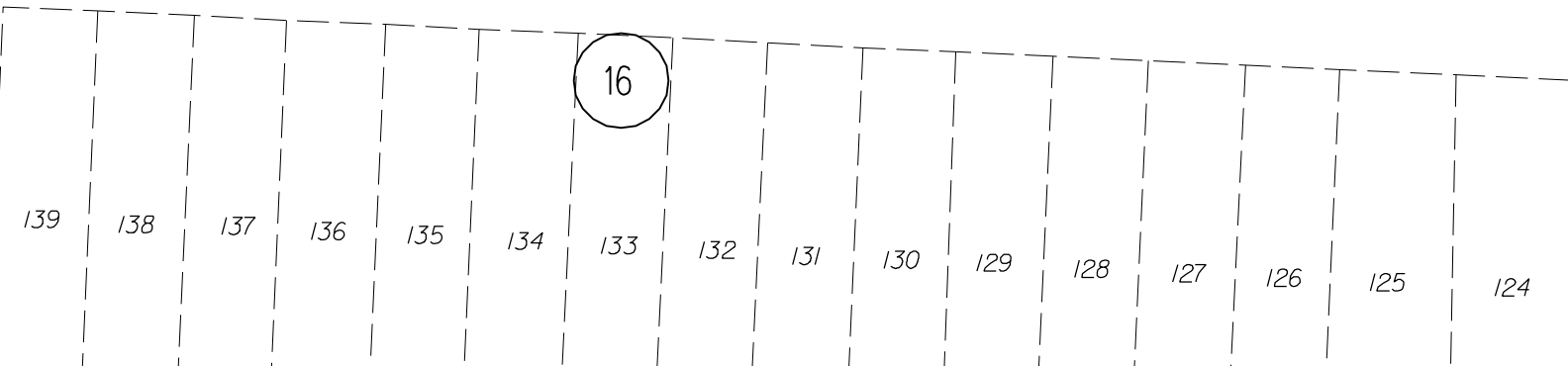
ST. (VACATED)

S 28TH ST.

17

16

20



12
0.71Ac

180

24
TR 8705
MB 463-27
4-15-04
18.84Ac

N03°54'11"E
46.36

N86°05'49"W

(S87°04'E)

436.98

50

N81°13'39"W
157.29

W74°04'50"W
121.47

N0°47'56"E
85.12

N86°05'47"W
166.12

JOHN T. KNOX FRWY 580

PB
560

180

TR
8705
7/06/04

NOTE: THIS MAP WAS PREPARED FOR ASSESSMENT PURPOSES ONLY. NO LIABILITY IS ASSUMED FOR THE ACCURACY OF THE INFORMATION DELINEATED HEREON. ASSESSOR'S PARCELS MAY NOT COMPLY WITH LOCAL LOT SPLIT OR BUILDING SITE ORDINANCES.

FM. 145/46 1963 ROLL
ASSESSOR'S MAP
BOOK 549 PAGE 18
CONTRA COSTA COUNTY, CALIF.