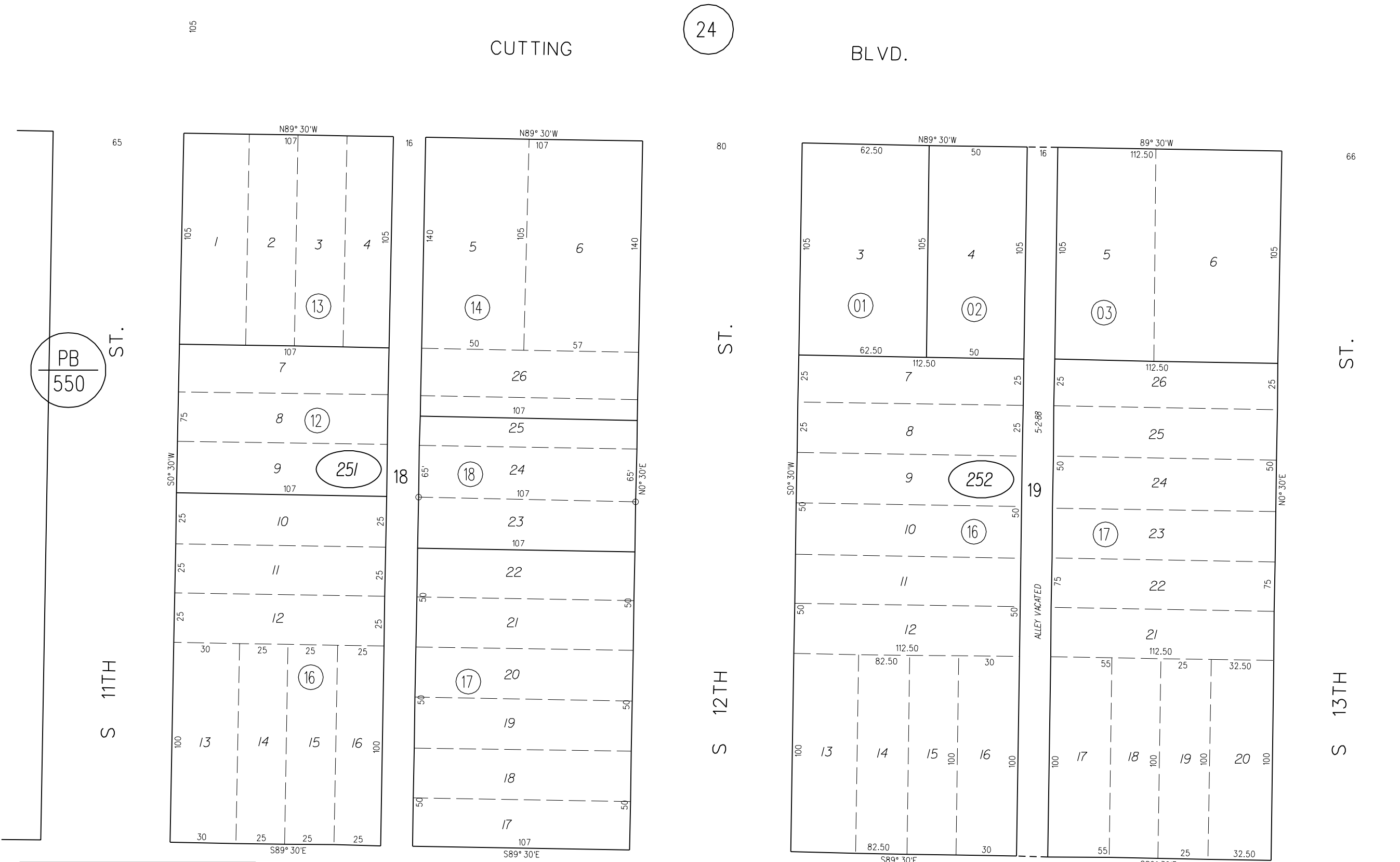
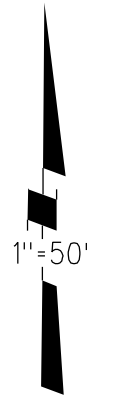


REV. MAP NYSTROM'S ADDITION TO POINT RICHMOND M.B.2-29



PB
550

NOTE: THIS MAP WAS PREPARED FOR ASSESSMENT PURPOSES ONLY. NO LIABILITY IS ASSUMED FOR THE ACCURACY OF THE INFORMATION DELINEATED HEREON. ASSESSOR'S PARCELS MAY NOT COMPLY WITH LOCAL LOT SPLIT OR BUILDING SITE ORDINANCES.

FM.132/66-67 1963 ROLL
ASSESSOR'S MAP
BOOK 544 PAGE 25
CONTRA COSTA COUNTY,CALIF.