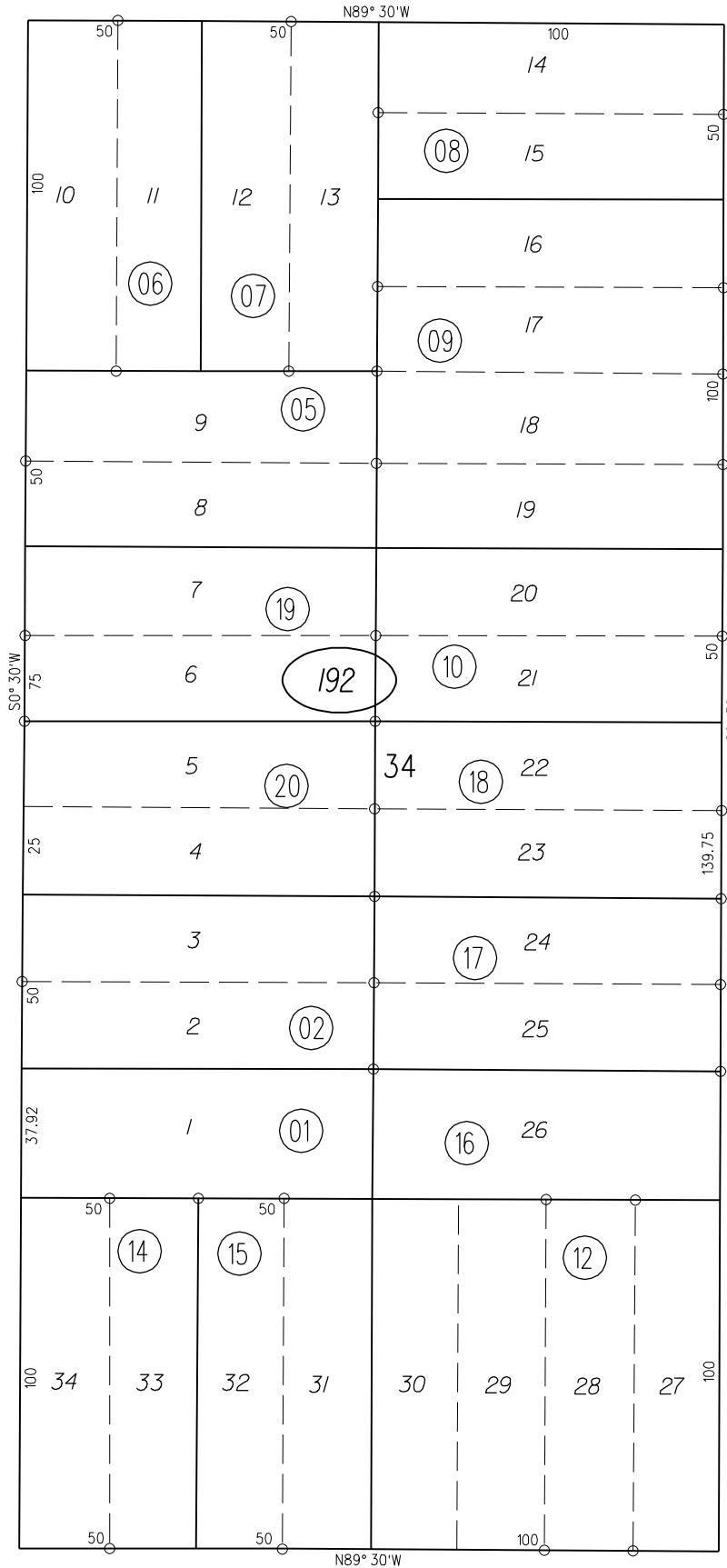
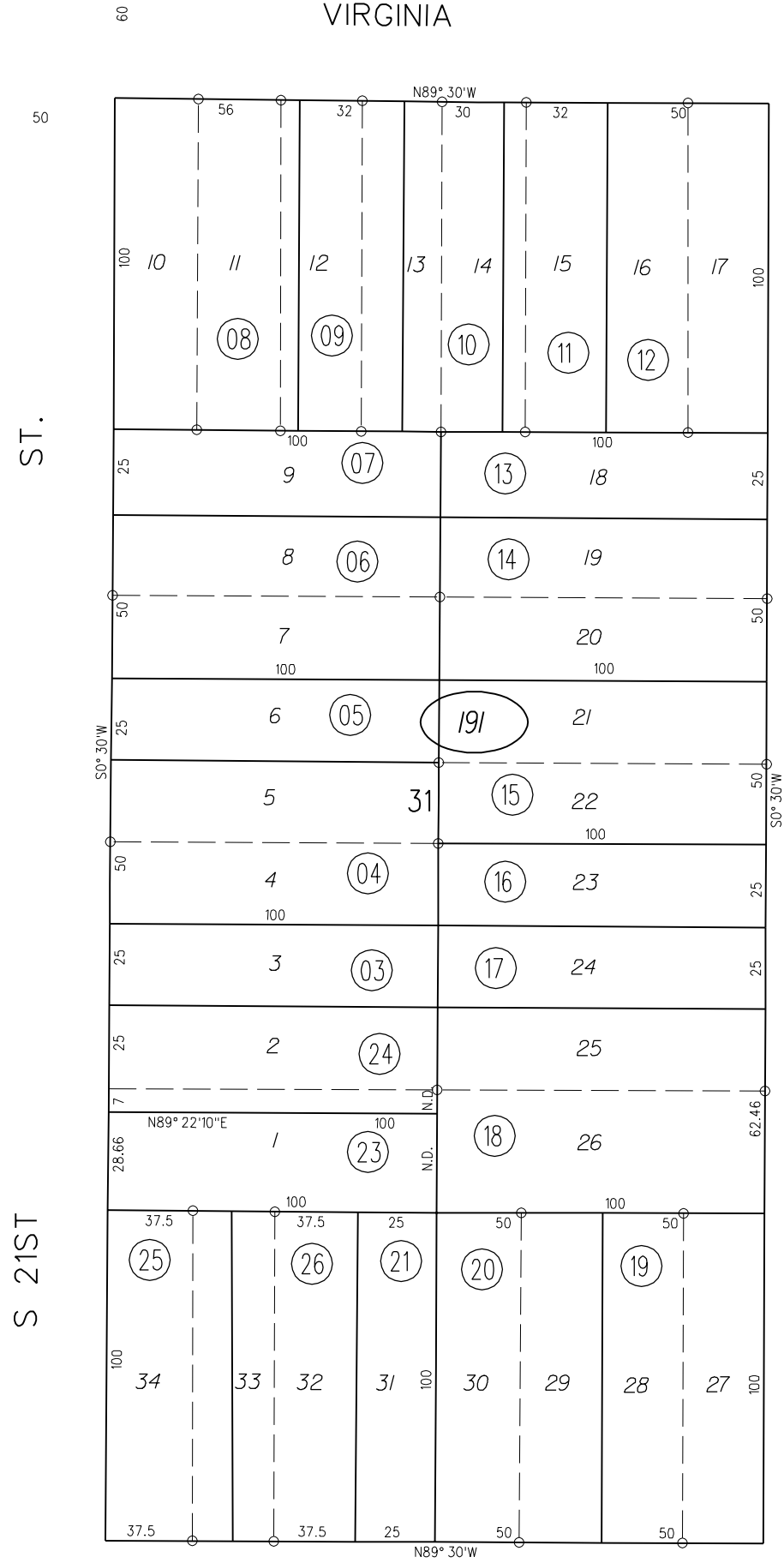


WALL'S HARBOR CENTER TRACT M.B.9-207

VIRGINIA

AVE.

18



ST. S 23RD

PB  
549

191  
192

FM. 133/70, 73

ASSESSOR'S MAP

BOOK 544 PAGE 19

12-2-60 C.C.C. CONTRA COSTA COUNTY, CALIF.

