

PB  
550

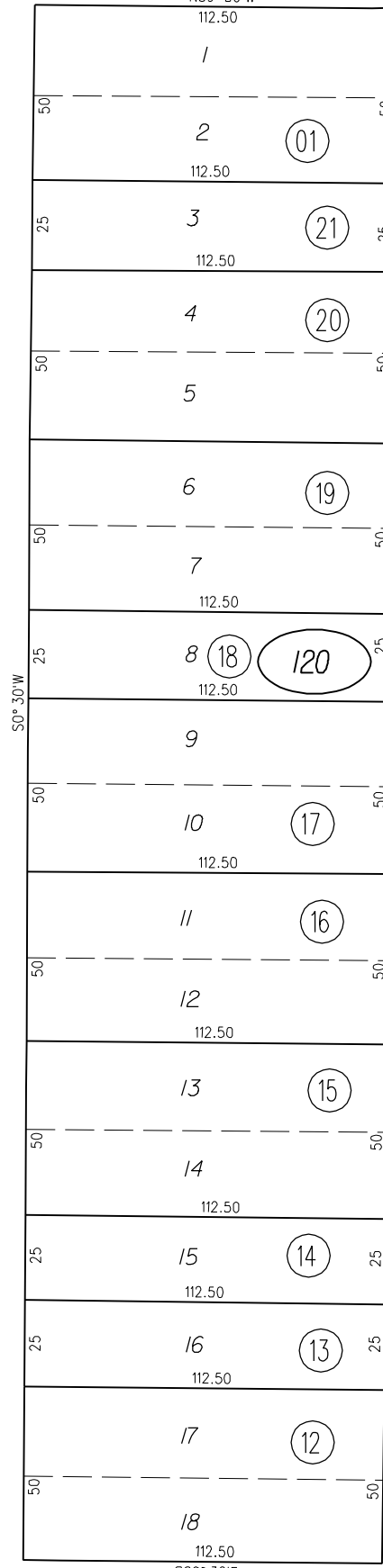
S. 12TH ST.

50° 30' W

60

FLORIDA

N89° 30' W  
112.50



7

13

MAINE

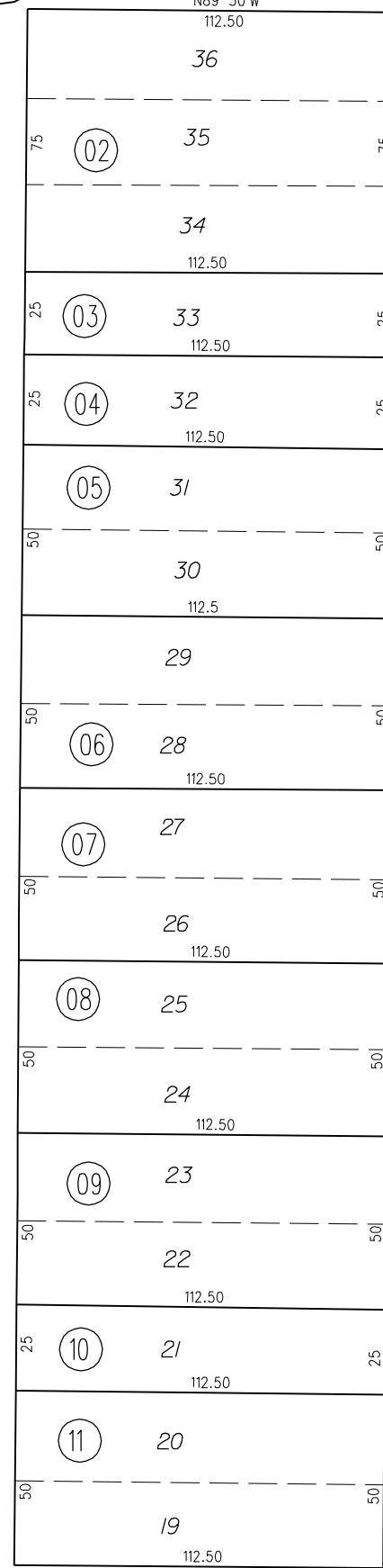
S89° 30' E  
112.50

13

02

AVE.

N89° 30' W  
112.50



N0° 30' E

S. 13TH ST.

ST.

66

TAX CODE AREA  
NYSTROM'S ADDITION  
TO  
POINT RICHMOND M.B.8-30

11

120

FM.132/56 1963 ROLL  
ASSESSOR'S MAP

BOOK 544 PAGE 12

2-5-59 G.C.C. CONTRA COSTA COUNTY,CALIF.

