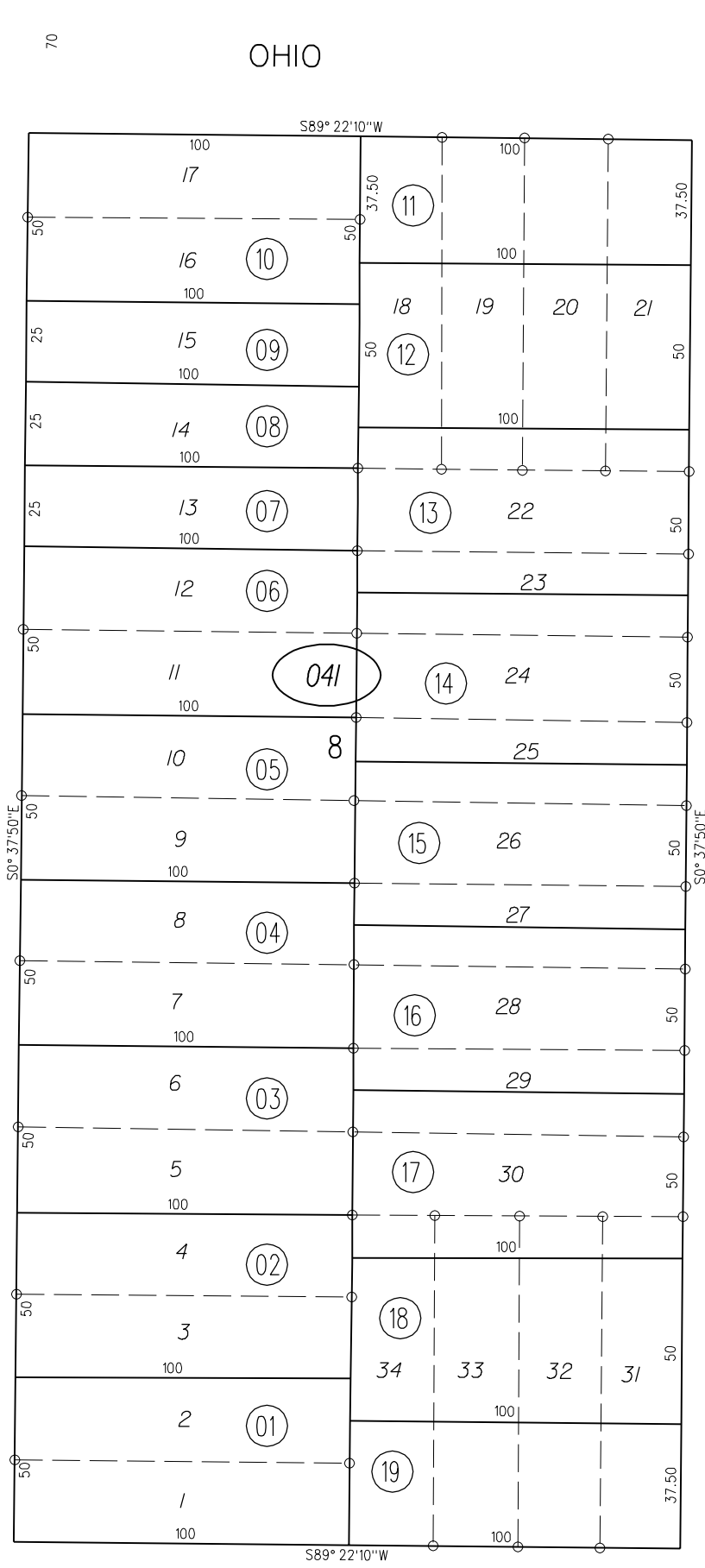


60.25

03

S. 17TH ST.

S. 17TH ST.

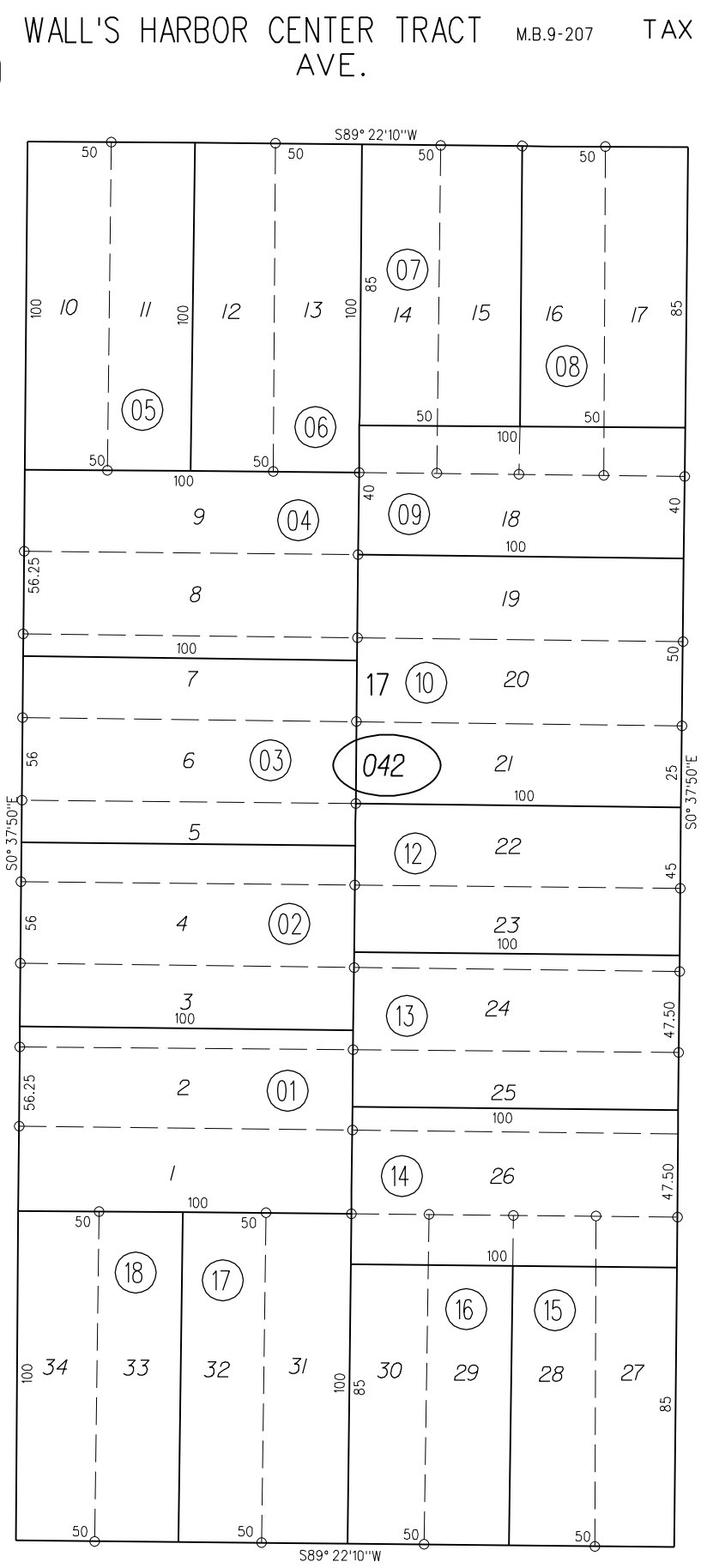


FLORIDA

PB 540

S. 18TH ST.

S. 18TH ST.



AVE.

S. 19TH ST.

S. 19TH ST.

05

041
042

1"=50'

FM.133/47,56 1963 ROLL

ASSESSOR'S MAP

BOOK 544 PAGE 04

11-28-60 G.C.C. CONTRA COSTA COUNTY, CALIF.