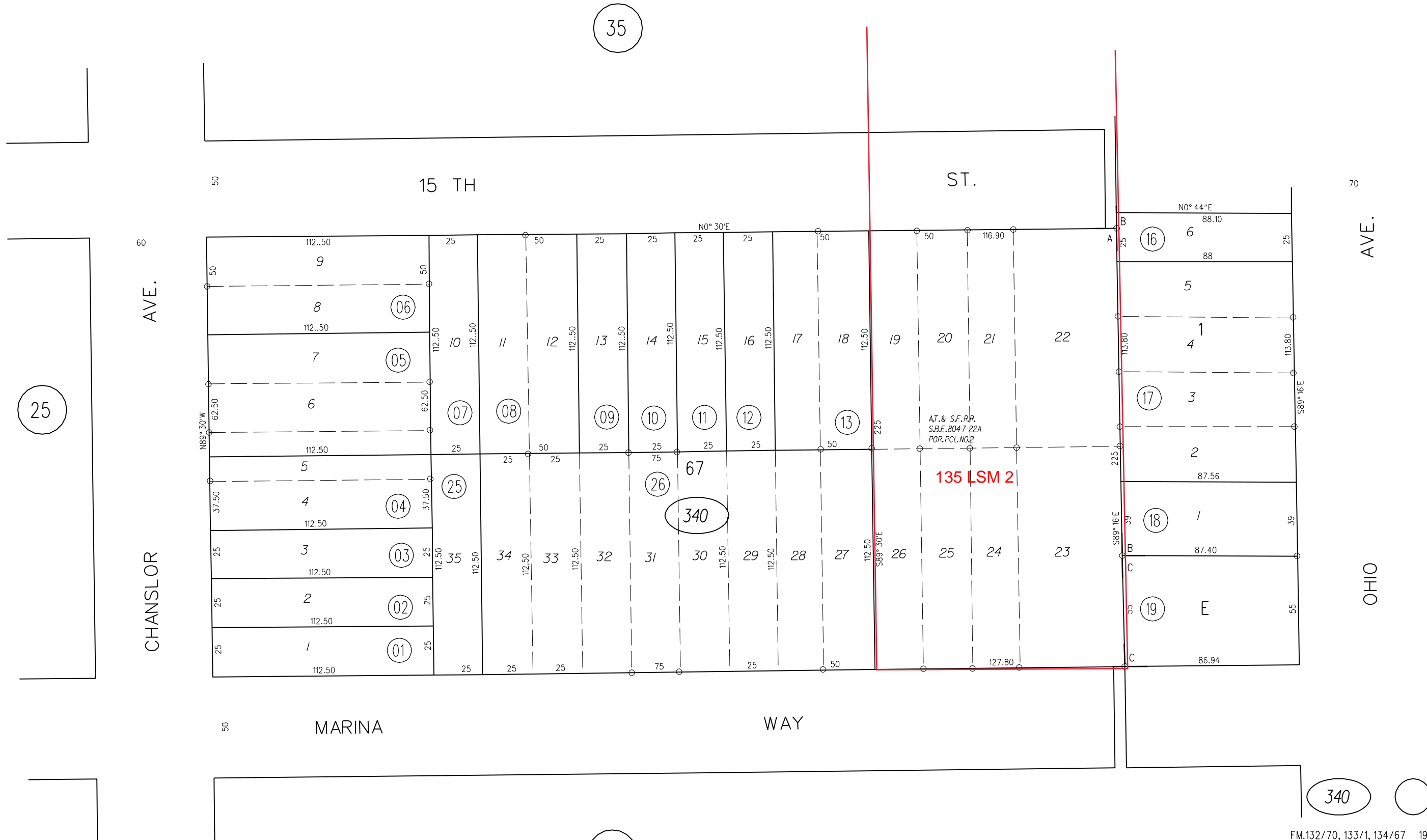


A- AMENDED MAP, CITY OF RICHMOND M.B.D-74
 B- GRIFFIN'S AND WATROUS ADDITION TO RICHMOND M.B.F-138
 C- NYSTROM'S ADDITION TO POINT RICHMOND M.B.2-29

TAX CODE AREA



FM.132/70, 133/1, 134/67 1962 ROLL

ASSESSOR'S MAP

BOOK 540 PAGE 34

8-20-58 G.C.C. CONTRA COSTA COUNTY, CALIF.