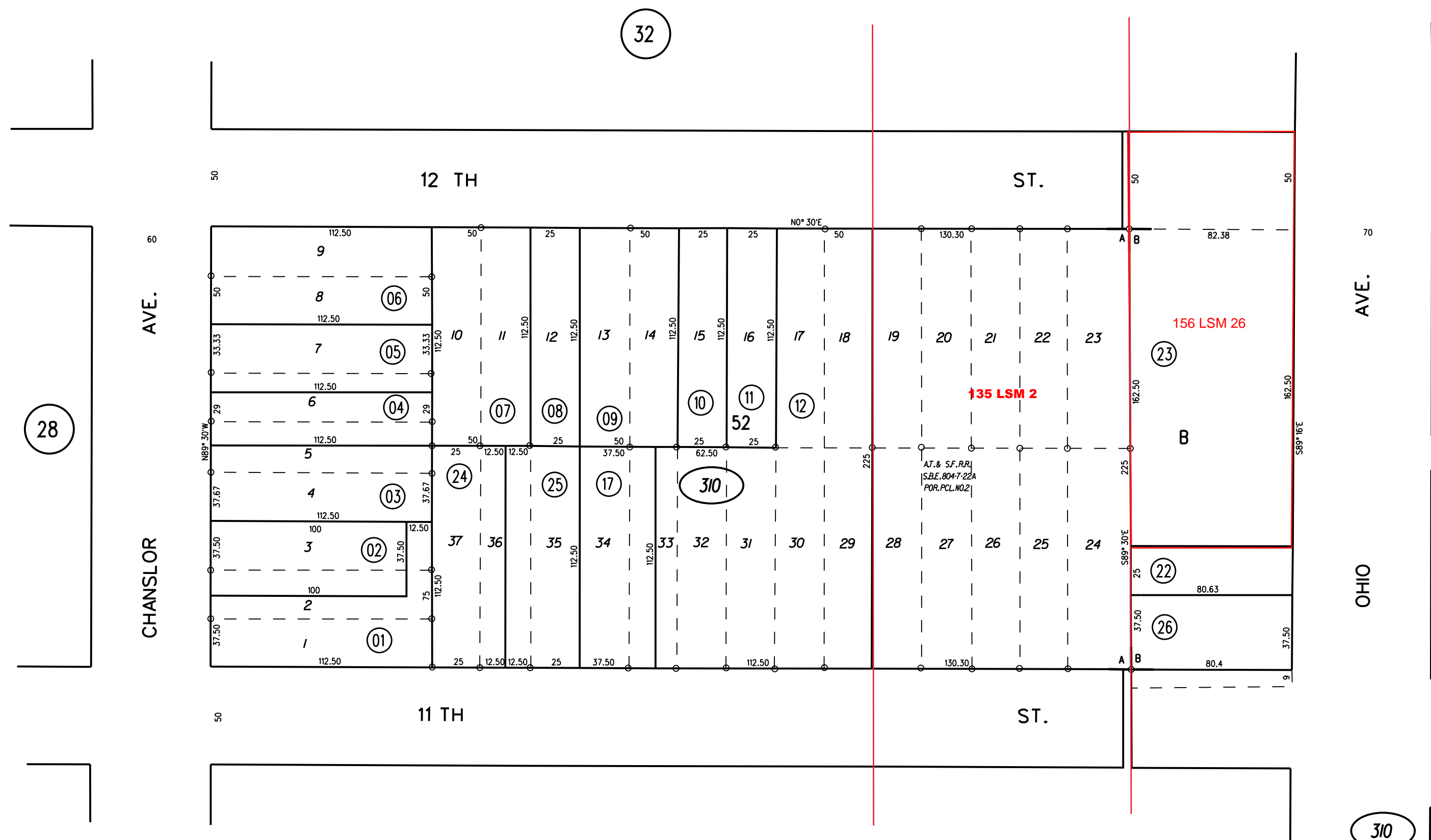
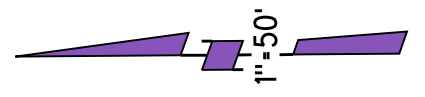


A- AMENDED MAP, CITY OF RICHMOND M.B.D-74
 B- NYSTROM'S ADDITION TO POINT RICHMOND M.B.2-29



NOTE: THIS MAP WAS PREPARED FOR ASSESSMENT PURPOSES ONLY. NO LIABILITY IS ASSUMED FOR THE ACCURACY OF THE INFORMATION DELINEATED HEREON. ASSESSOR'S PARCELS MAY NOT COMPLY WITH LOCAL LOT SPLIT OR BUILDING SITE ORDINANCES.

310 26 5/3/16
 FM.132/69 & 134/52 8-18-58 G.C.C.
 ASSESSOR'S MAP
 BOOK 540 PAGE 31
 CONTRA COSTA COUNTY, CALIF.