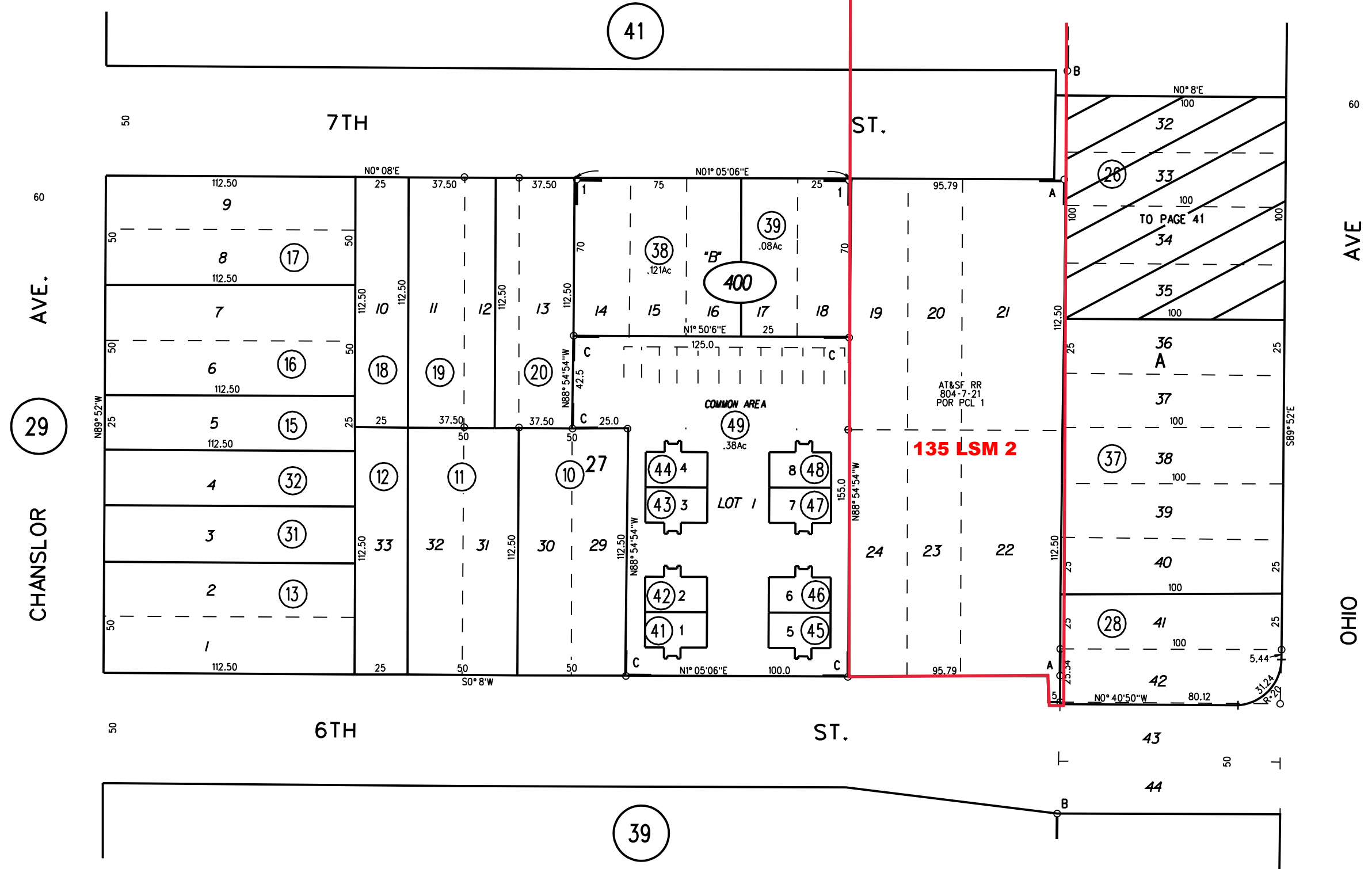


A- AMENDED MAP, CITY OF RICHMOND MB D-74  
 B- POR BLK A, SANTA FE TOWNSITE MB E-102  
 1- 136PM46 11/8/88  
 C- TRACT 9061 MB 496-28 10/5/06  
 CC&R's 2006-0358715 11/8/06  
 (6TH STREET CONDOMINIUMS)



PB  
550

NOTE: THIS MAP WAS PREPARED FOR ASSESSMENT PURPOSES ONLY. NO LIABILITY IS ASSUMED FOR THE ACCURACY OF THE INFORMATION DELINEATED HEREON. ASSESSOR'S PARCELS MAY NOT COMPLY WITH LOCAL LOT SPLIT OR BUILDING SITE ORDINANCES.

400  
11/13/13

FM 132/41 FM 134/27  
6-17-58 G.C.C.  
ASSESSOR'S MAP  
BOOK 538 PAGE 40  
CONTRA COSTA COUNTY, CALIF.