

11

12

NEVIN VACATION 12526 OR 798 9-20-85

AVE.

50

50

61.94

ST.

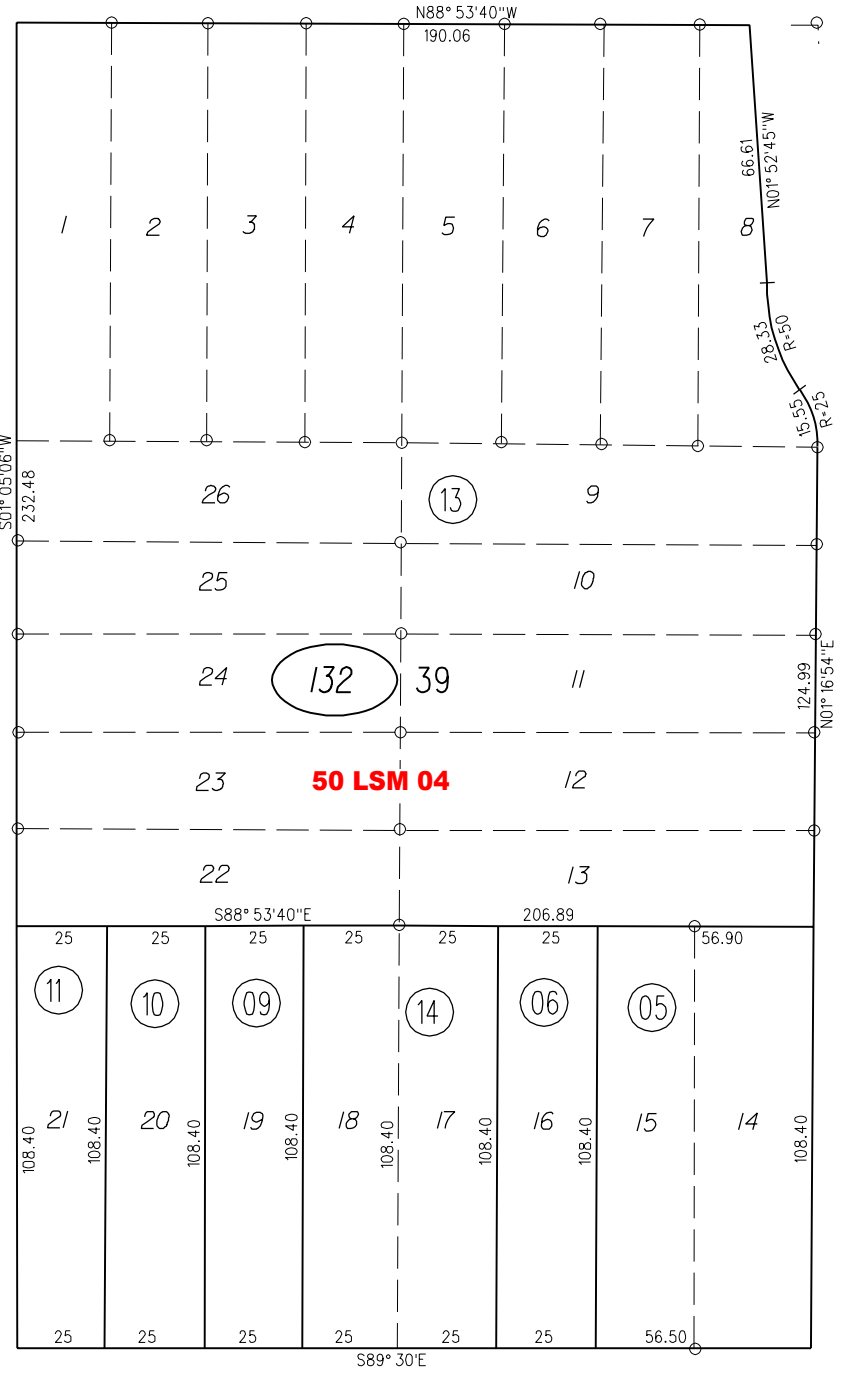
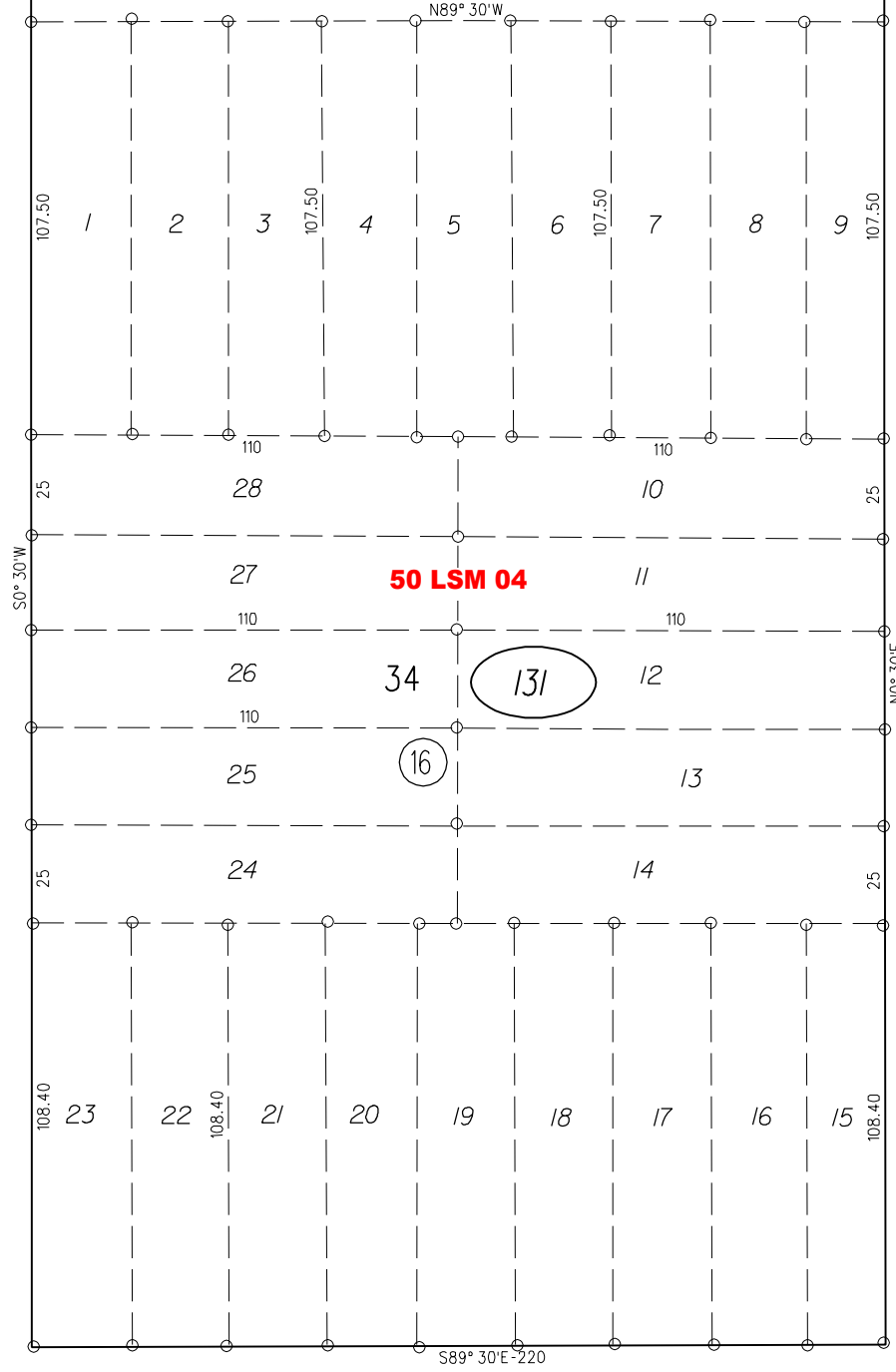
ST.

WAY

8 TH

8 TH

HARBOUR



1"=50'



PB 540

131

132

MACDONALD

AVE.

25

26

1962 ROLL

7-23-58 G.C.C. FM. 134/34,39

ASSESSOR'S MAP

BOOK 538 PAGE 13

CONTRA COSTA COUNTY, CALIF.

5-20-92

14

PB 540

131

132