

A- TOWN OF POINT RICHMOND, MAP NO.3 M.B.E-107

B- RICHMOND TRACT M.B.C-65

05

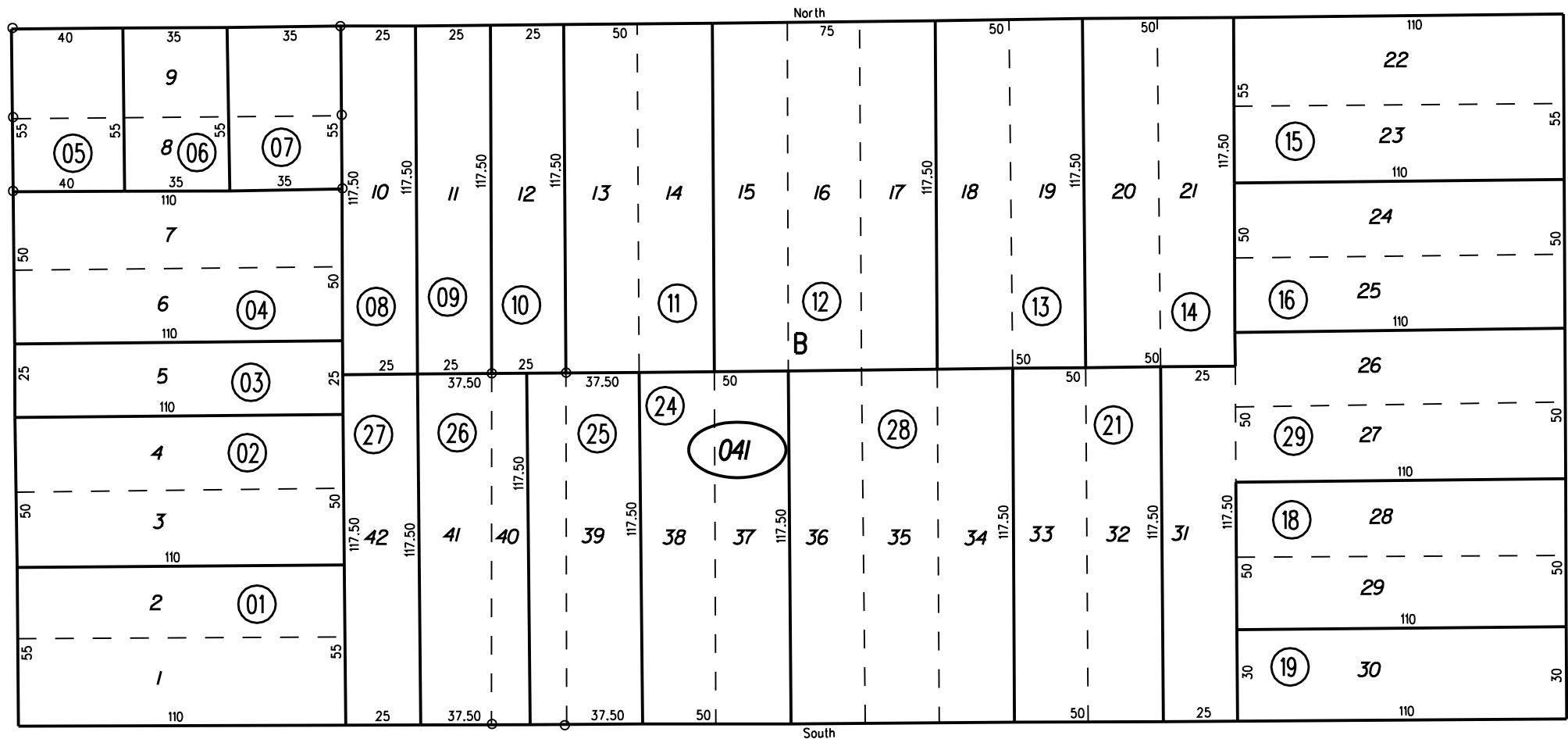
2 ND.

50

ST.



AVE.



South

1 ST

60

ST.

AVE.

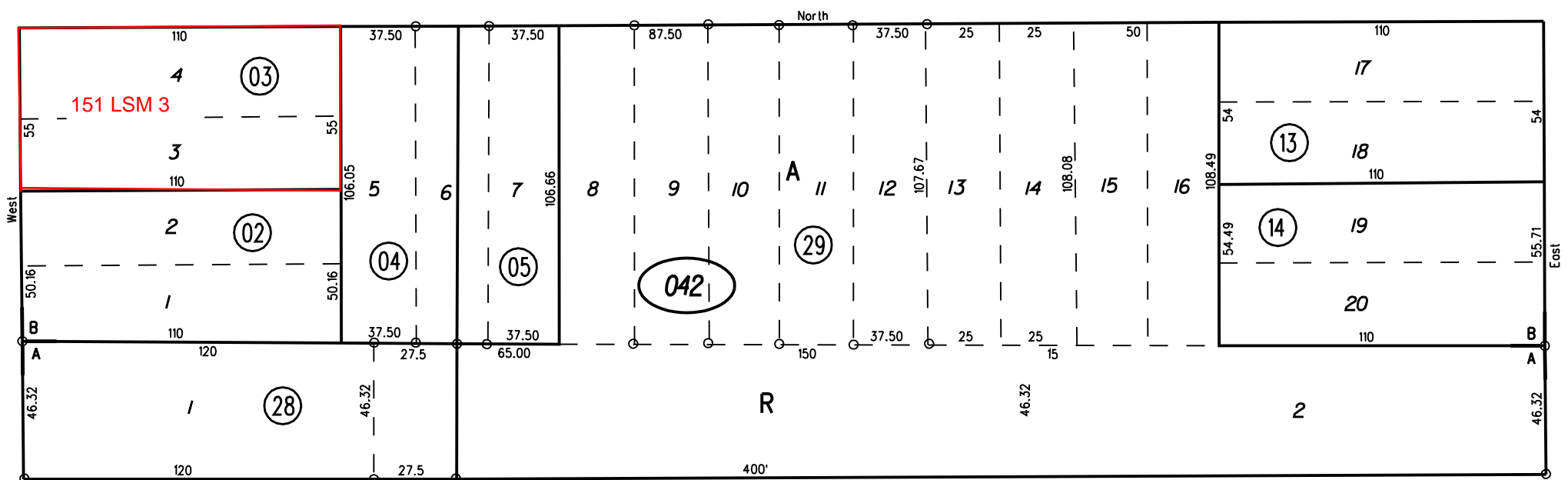
60

17

NOTE: THIS MAP WAS PREPARED FOR ASSESSMENT PURPOSES ONLY. NO LIABILITY IS ASSUMED FOR THE ACCURACY OF THE INFORMATION DELINEATED HEREON. ASSESSOR'S PARCELS MAY NOT COMPLY WITH LOCAL LOT SPLIT OR BUILDING SITE ORDINANCES.

PB
534

W. BARRET



South

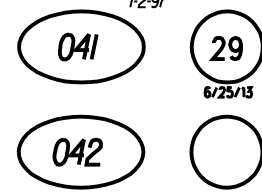
A

03

60

ST.

W. NEVIN



1-2-97

6/25/13

FM.137/1-2
6-4-58 G.C.C.

1962 ROLL
ASSESSOR'S MAP
BOOK 538 PAGE 04
CONTRA COSTA COUNTY, CALIF.