

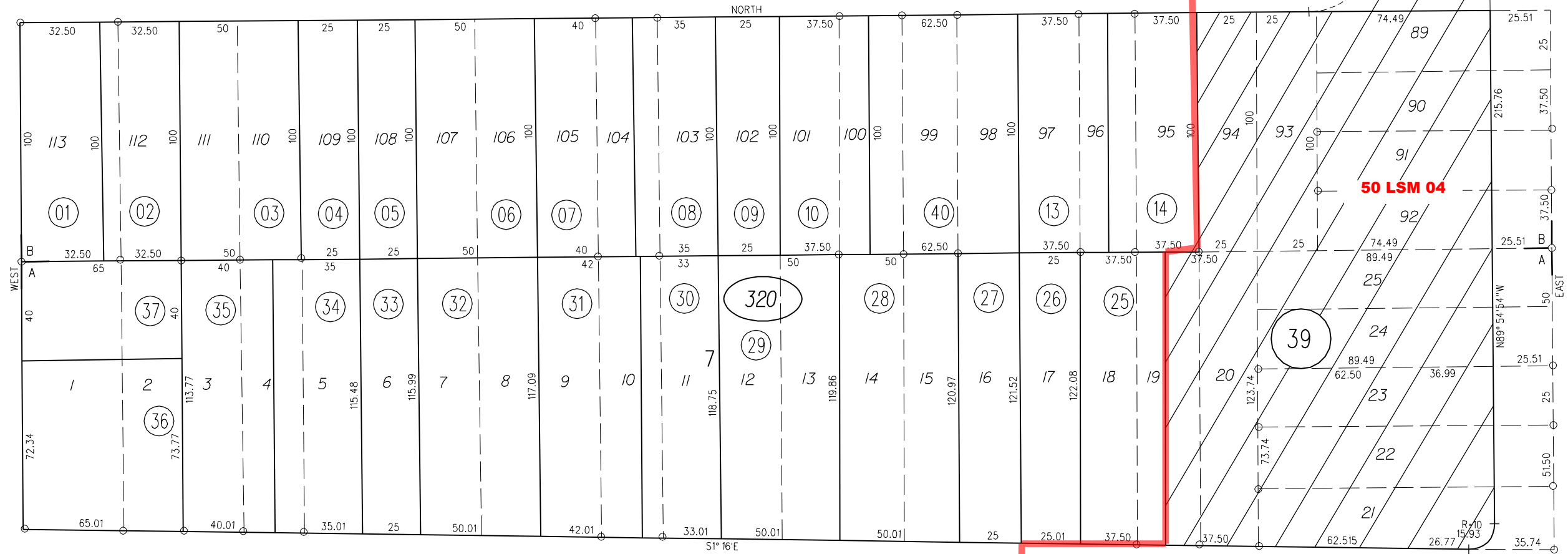


33

9TH

ST.

VACATED
 6866 O.R.447
 2-16-73



AVE.

AVE.

18

PB
 538

RIPLEY

BARRETT

8TH

ST.

MAPLE AVE.

HAWTHORNE AVE.

31

320

NOTE: THIS MAP WAS PREPARED FOR ASSESSMENT PURPOSES ONLY. NO LIABILITY IS ASSUMED FOR THE ACCURACY OF THE INFORMATION DELINEATED HEREON. ASSESSOR'S PARCELS MAY NOT COMPLY WITH LOCAL LOT SPLIT OR BUILDING SITE ORDINANCES.