

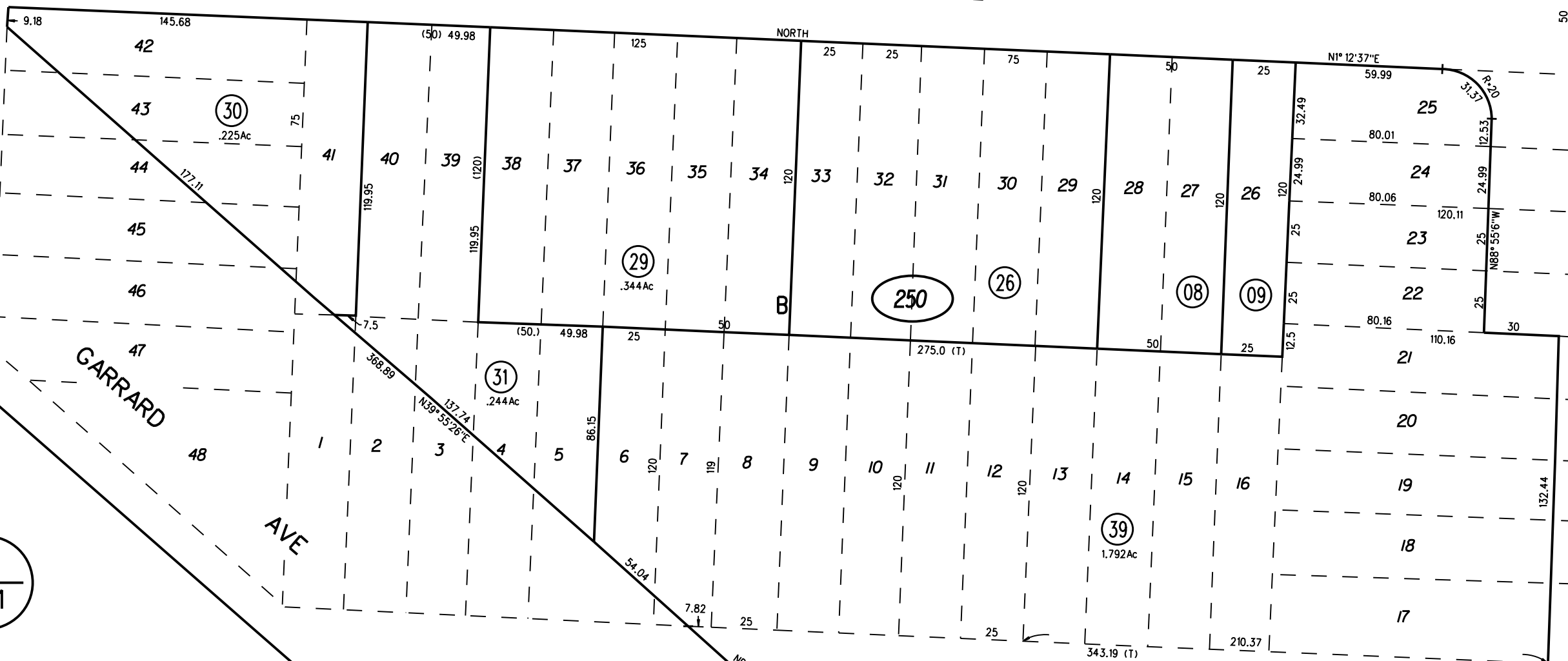


W RIPLEY

A

STREET

NORTH



PB 561

AVE

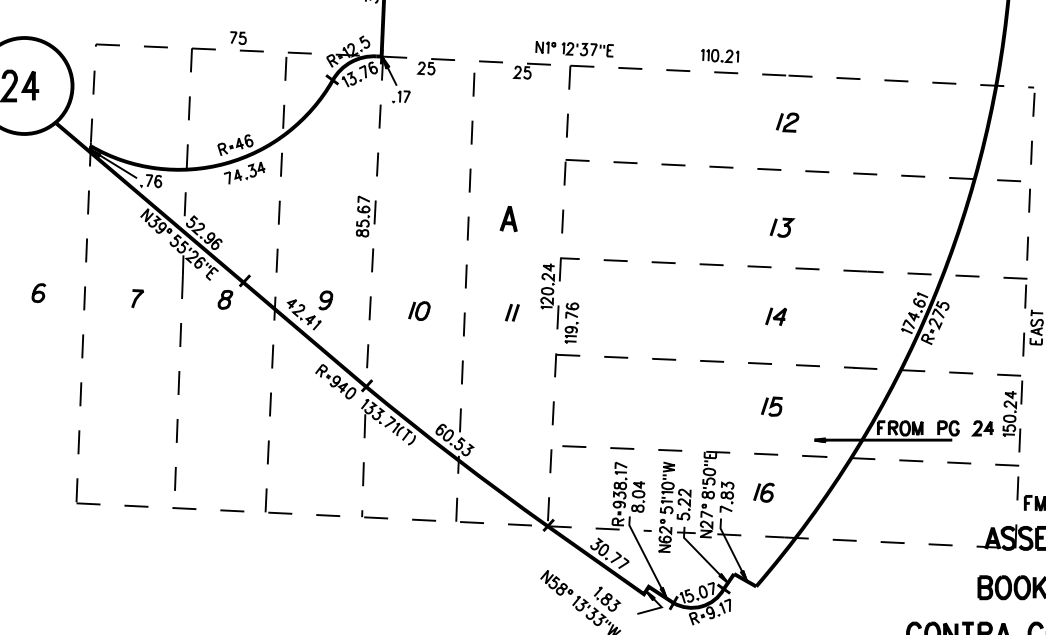
PB 538

WEST BARRETT

(B STREET)

VACATED 2008-0253309 11/20/08

24



NOTE: THIS MAP WAS PREPARED FOR ASSESSMENT PURPOSES ONLY. NO LIABILITY IS ASSUMED FOR THE ACCURACY OF THE INFORMATION DELINEATED HEREON. ASSESSOR'S PARCELS MAY NOT COMPLY WITH LOCAL LOT SPLIT OR BUILDING SITE ORDINANCES.

250

39

12/10/21

FM137/10 3/13/61.GCC

ASSESSOR'S MAP

BOOK 534 PAGE 25

CONTRA COSTA COUNTY, CALIF.