

A- TERMINAL TRACT M.B. B-36
 B- RICHMOND HOME TRACT M.B. E-106

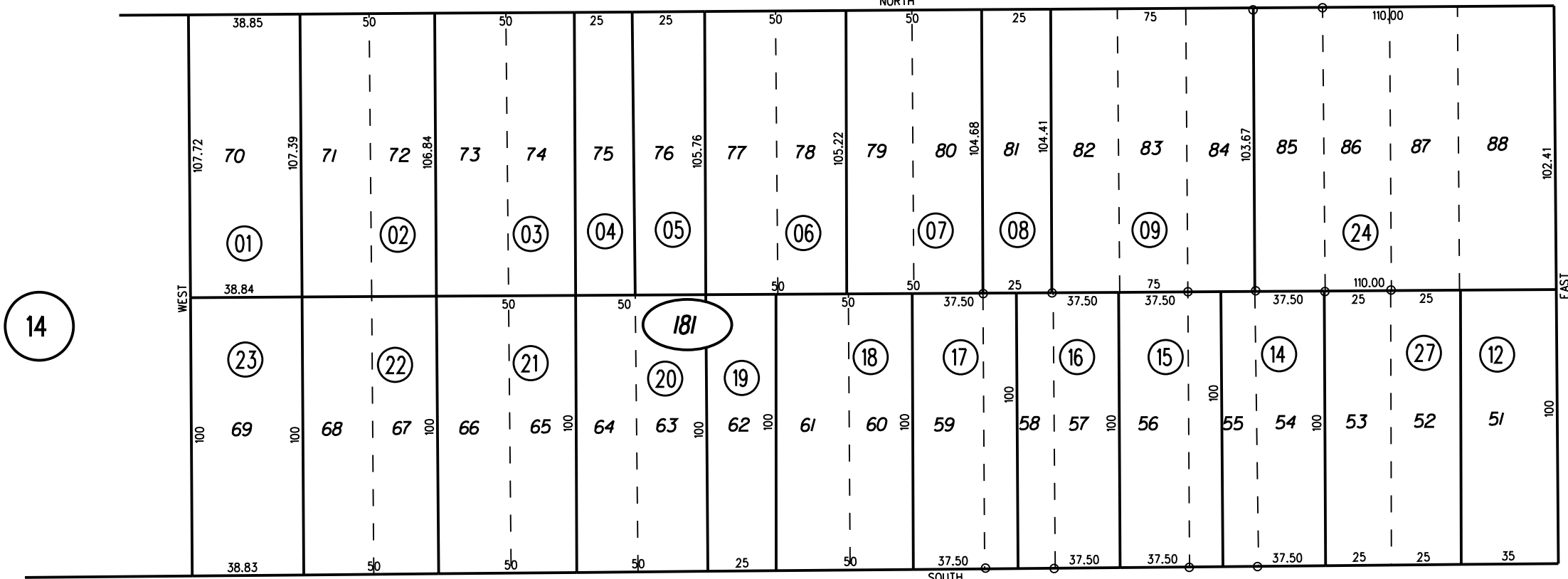
17



60

HARBOUR

WAY



60

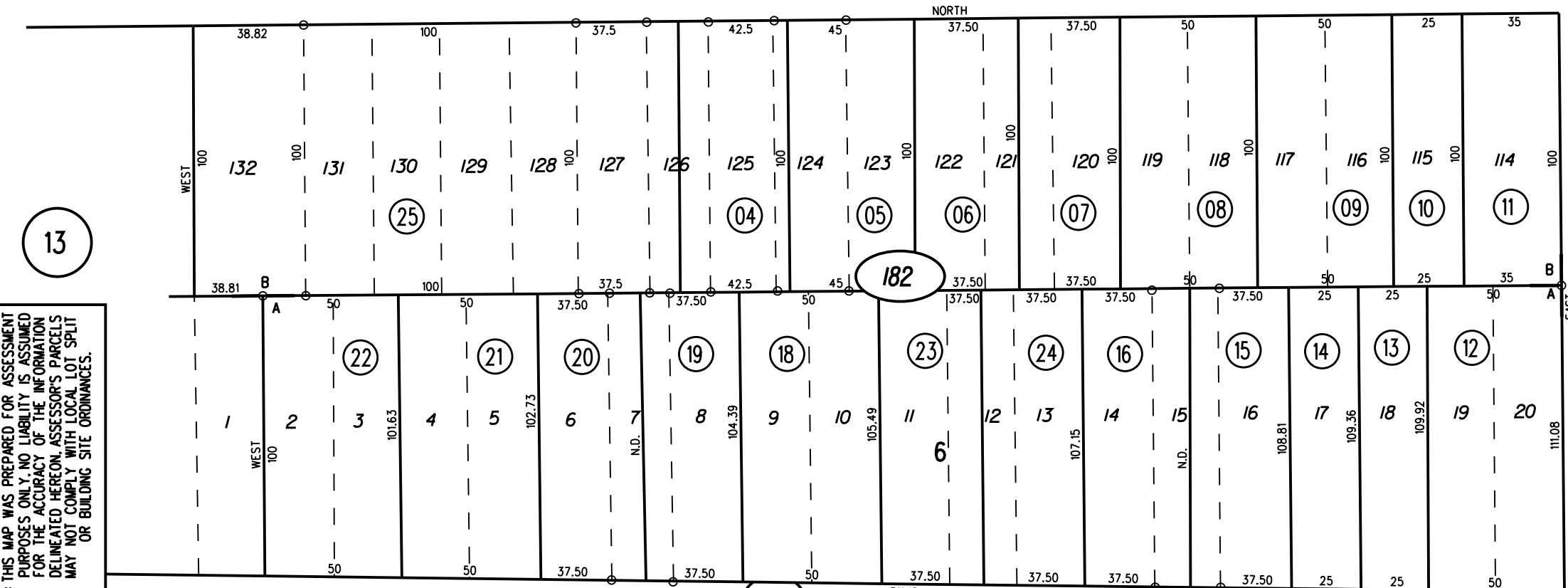
AVE

33

50

9 TH

ST



13

50

8 TH

ST

RIPLEY

32

181

27 7/24/19

182

○

NOTE: THIS MAP WAS PREPARED FOR ASSESSMENT PURPOSES ONLY. NO LIABILITY IS ASSUMED FOR THE ACCURACY OF THE INFORMATION DELINEATED HEREON. ASSESSOR'S PARCELS MAY NOT COMPLY WITH LOCAL LOT SPLIT OR BUILDING SITE ORDINANCES.

FM.137/34,37 3-10-61 G.C.C.
 ASSESSOR'S MAP

BOOK 534 PAGE 18
 CONTRA COSTA COUNTY, CALIF.