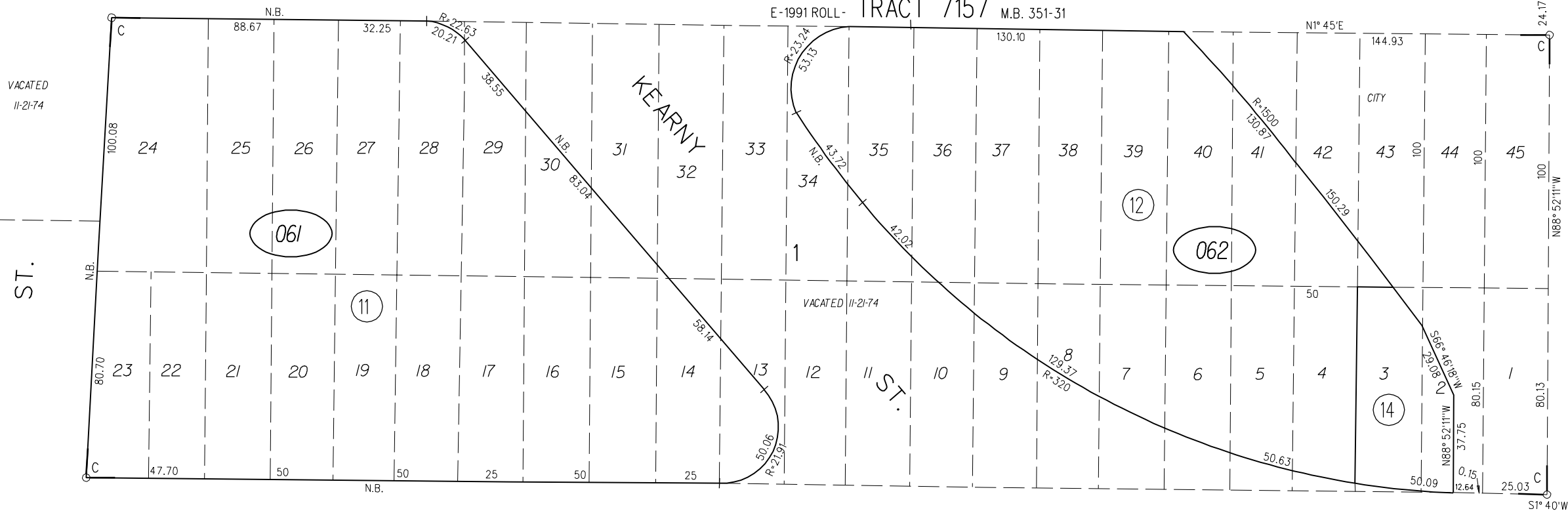
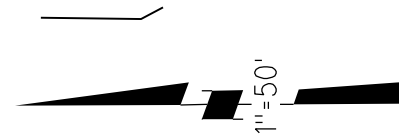


11TH. (04) ST.

VACATED 11-21-74

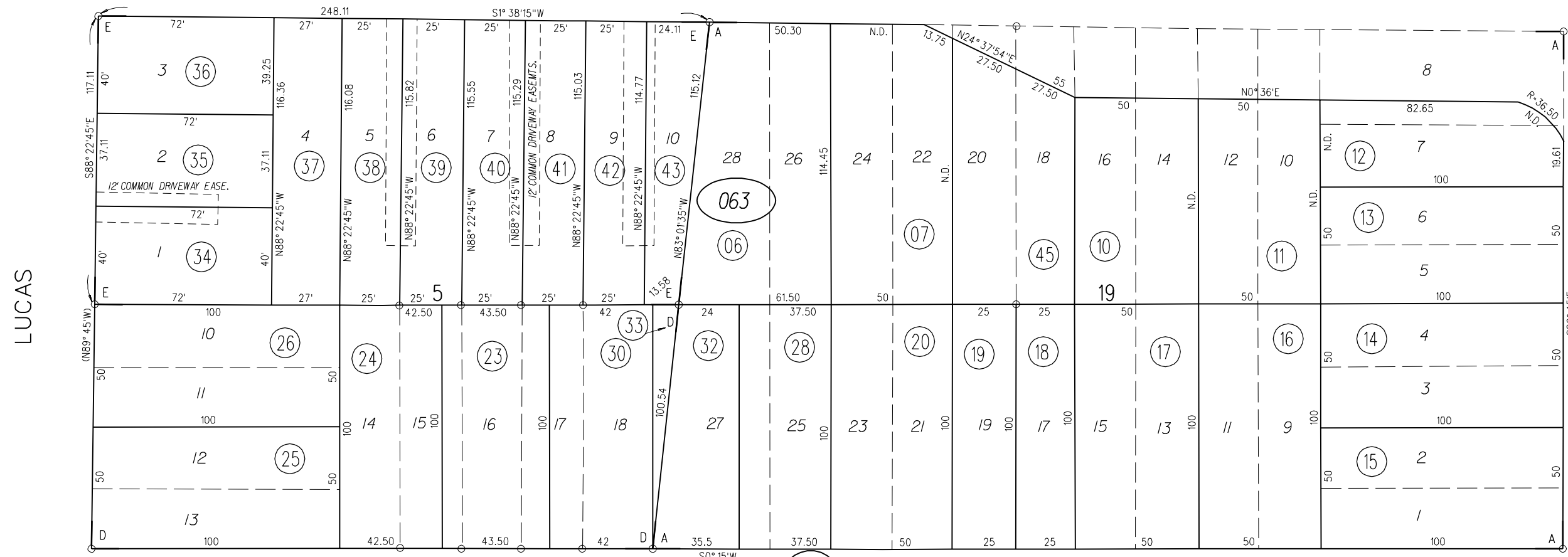
A- TURPIN'S ADDITION M.B. C-53  
B- LUCAS TRACT (RESUB. LOTS 4-9, BLK.5) M.B. E-99  
C- BELVEDERE TRACT M.B. E-112  
D- MARTHA WASHINGTON TRACT M.B. E-113  
E- 1991 ROLL- TRACT 7157 M.B. 351-31



(03)

10TH. ST.

(14)



9TH. ST.

(07)

ST.

AVE.

PENNSYLVANIA

