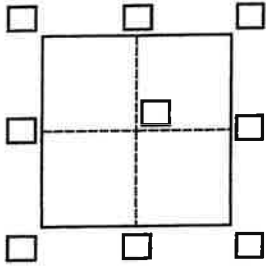


CORNER RECORD

Agency Index 239 CL 32
 Document Number -11364

City of RICHMOND County of Contra Costa, California
 Brief Legal Description LOT 423 55M7



CORNER TYPE

Government Corner Control
 Meander Property
 Rancho Other

Date of Survey 8-24-22

COORDINATES (Optional)

N. _____ E. _____
 Elevation _____
 Units Metric U.S. Survey Foot
 Horizontal Datum _____
 Zone _____ Epoch Date _____
 Vertical Datum _____
 Complies with Public Resources Code §§8801-8819
 Complies with Public Resources Code §§8890-8902

PLS Act Ref.: 8765(d) 8771 8773 Other:
 Corner/Monument: Left as found Established Rebuilt Pre-Construction
 Found and tagged Reestablished Referenced Post-Construction

Narrative of corner identified and monument as found, set, reset, replaced, or removed:
 See sheet #2 for description(s):

SURVEYOR'S STATEMENT

This Corner Record was prepared by me or under my direction in conformance with
 the Professional Land Surveyors' Act on August 26, 2022.
 Signed Matthew Chapman P.L.S. or R.C.E. No. 7054



Matthew Chapman

COUNTY SURVEYOR'S STATEMENT

This Corner Record was received August 31, 2022
 and examined and filed November 29, 2022.
 Signed Dana M. Trezise P.L.S. or R.C.E. No. 7438
 Title Interim County Surveyor

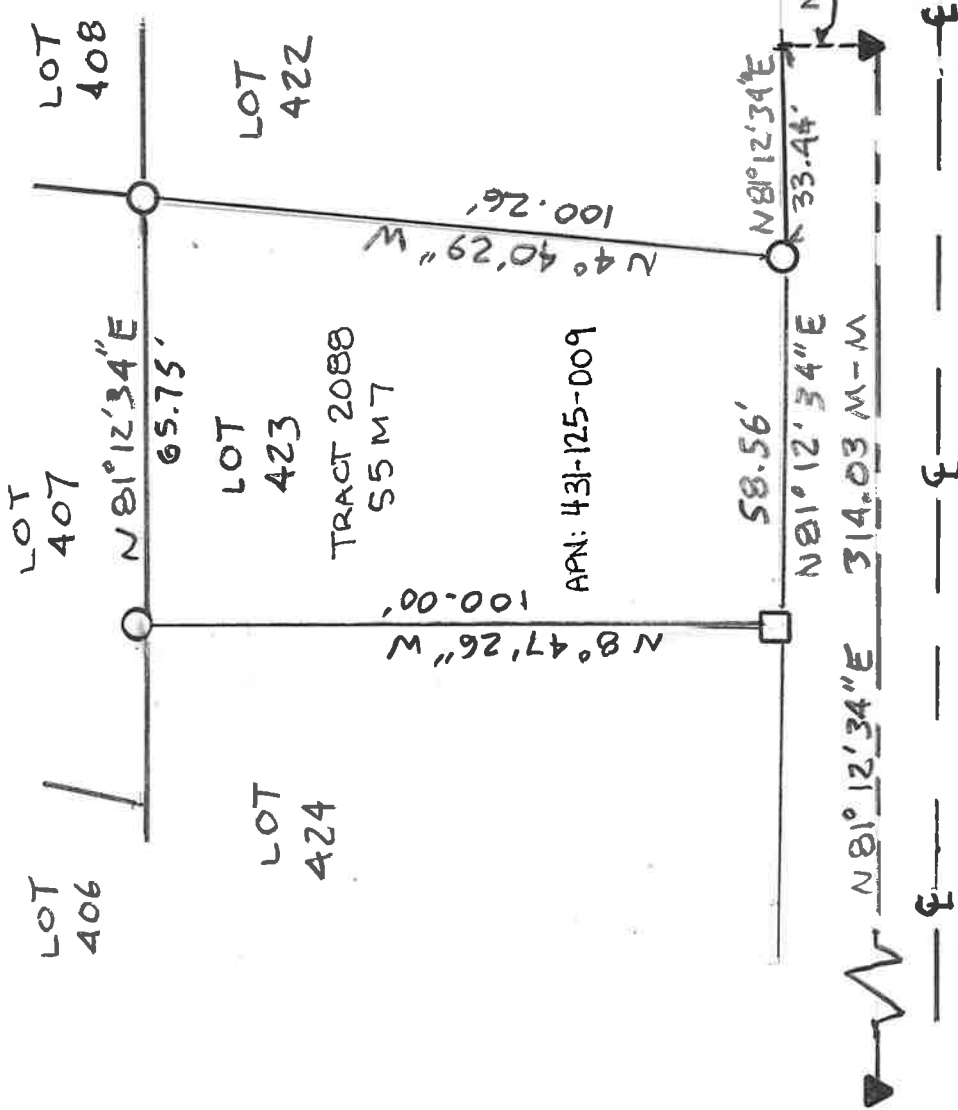


County Surveyor's Comment
APN: 431-125-009



LEGEND

- = SET BRASS TAG "PLS 7054"
- = SET 5/8" DIA REBAR & CAP "PLS 7054"
- ▲ = FOUND STREET MON PER. 55 M 7



SHELDON DR. 50' R/W N 81°12'34"E