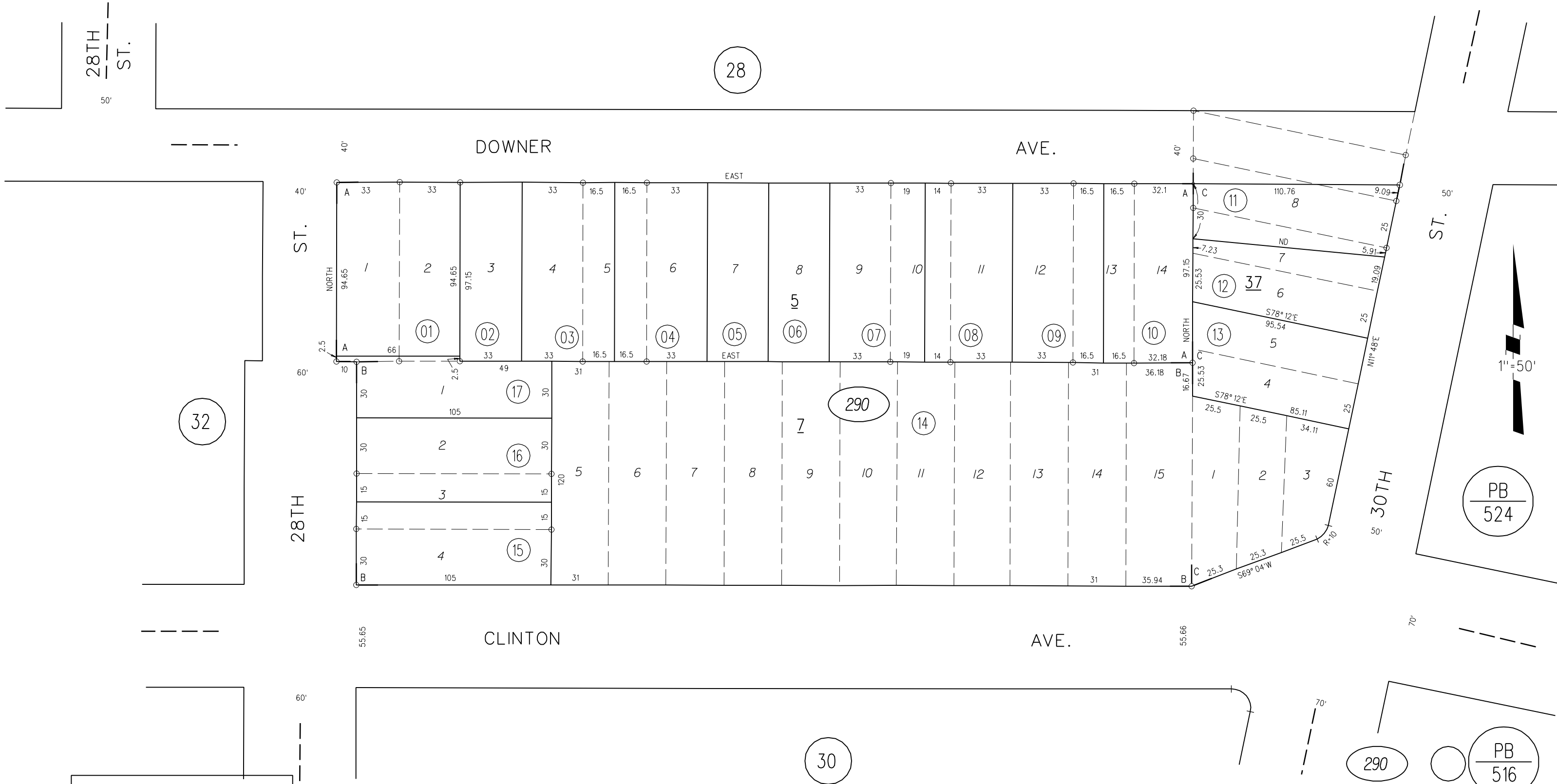


A- SHAPIRO'S CENTRAL TRACT ~~M.B. 3-111~~ MB 5-111
 B- AMENDED MAP, RICHMOND FIFTH ADDITION M.B.C-58
 C- GRAND VIEW TERRACE M.B. 6-148



NOTE: THIS MAP WAS PREPARED FOR ASSESSMENT PURPOSES ONLY. NO LIABILITY IS ASSUMED FOR THE ACCURACY OF THE INFORMATION DELINEATED HEREON. ASSESSOR'S PARCELS MAY NOT COMPLY WITH LOCAL LOT SPLIT OR BUILDING SITE ORDINANCES.

140-33 ; 141-58
 ASSESSOR'S MAP
 BOOK 528 PAGE 29
 CONTRA COSTA COUNTY, CALIF.