

- A- CORDOZA TRACT M.B.5-115
- B- SOITO'S FIRST ADDITION TO CITY OF RICHMOND M.B. D-78
- C- SCHAPIRO'S CENTRAL TRACT ~~M.B. 3-111~~ MB 5-111

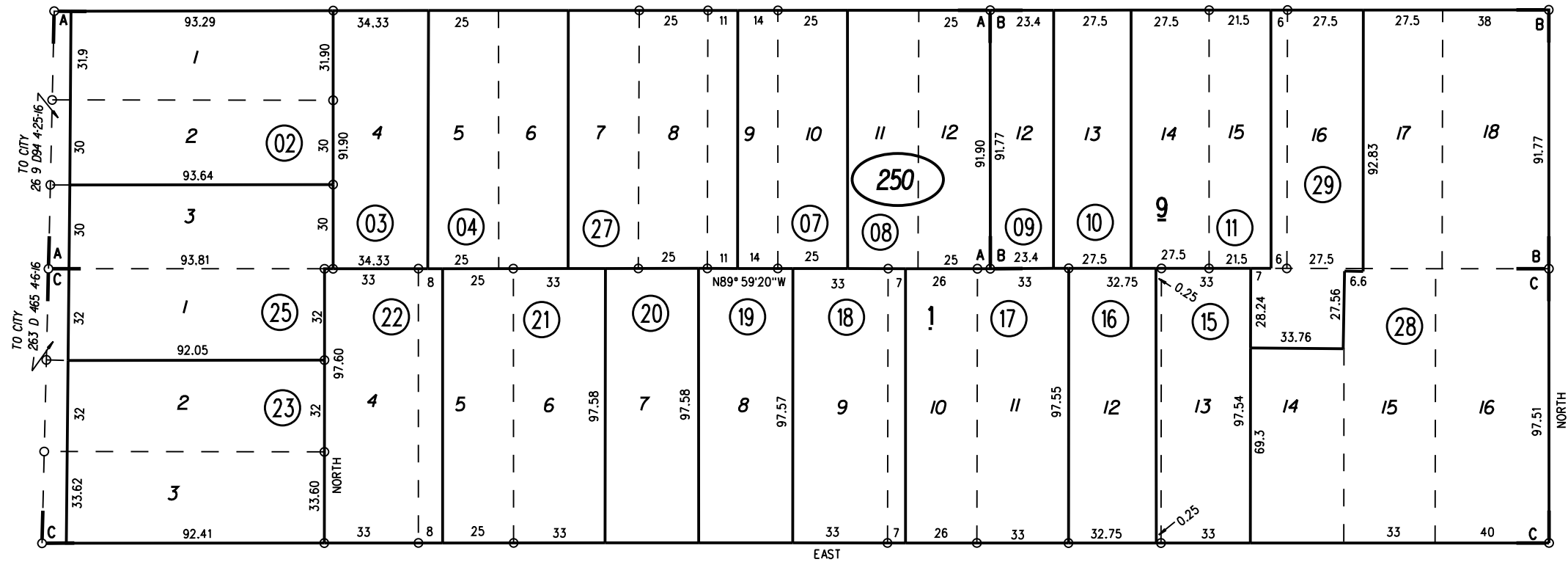
GARVIN

80'

24

ST

60' GARVIN AVE 60'



PB
529

23RD

80'

36

BURBECK

40' DOWNER AVE 40'

NOTE: THIS MAP WAS PREPARED FOR ASSESSMENT PURPOSES ONLY. NO LIABILITY IS ASSUMED FOR THE ACCURACY OF THE INFORMATION DELINEATED HEREON. ASSESSOR'S PARCELS MAY NOT COMPLY WITH LOCAL LOT SPLIT OR BUILDING SITE ORDINANCES.

35

250

28.29

9/11/18

140-29
ASSESSOR'S MAP
BOOK 528 PAGE 25
CONTRA COSTA COUNTY, CALIF.