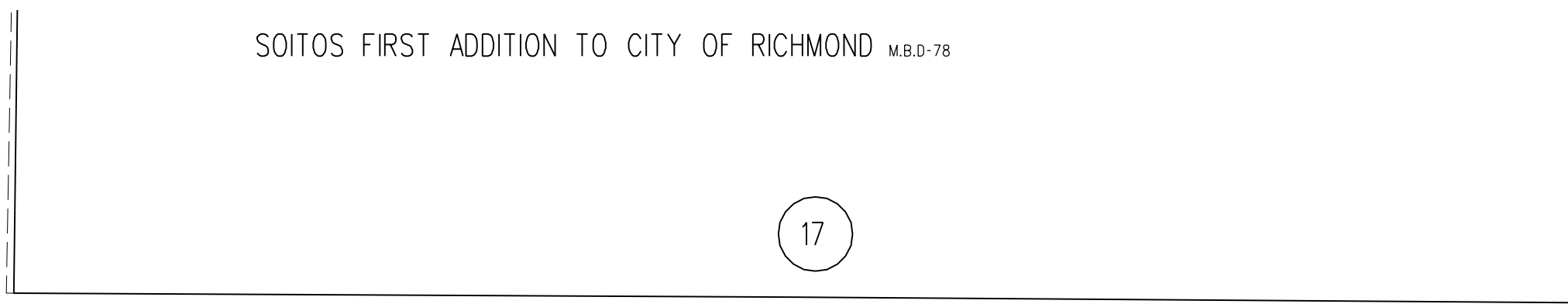


SOITOS FIRST ADDITION TO CITY OF RICHMOND M.B.D-78

GAYNOR

60'

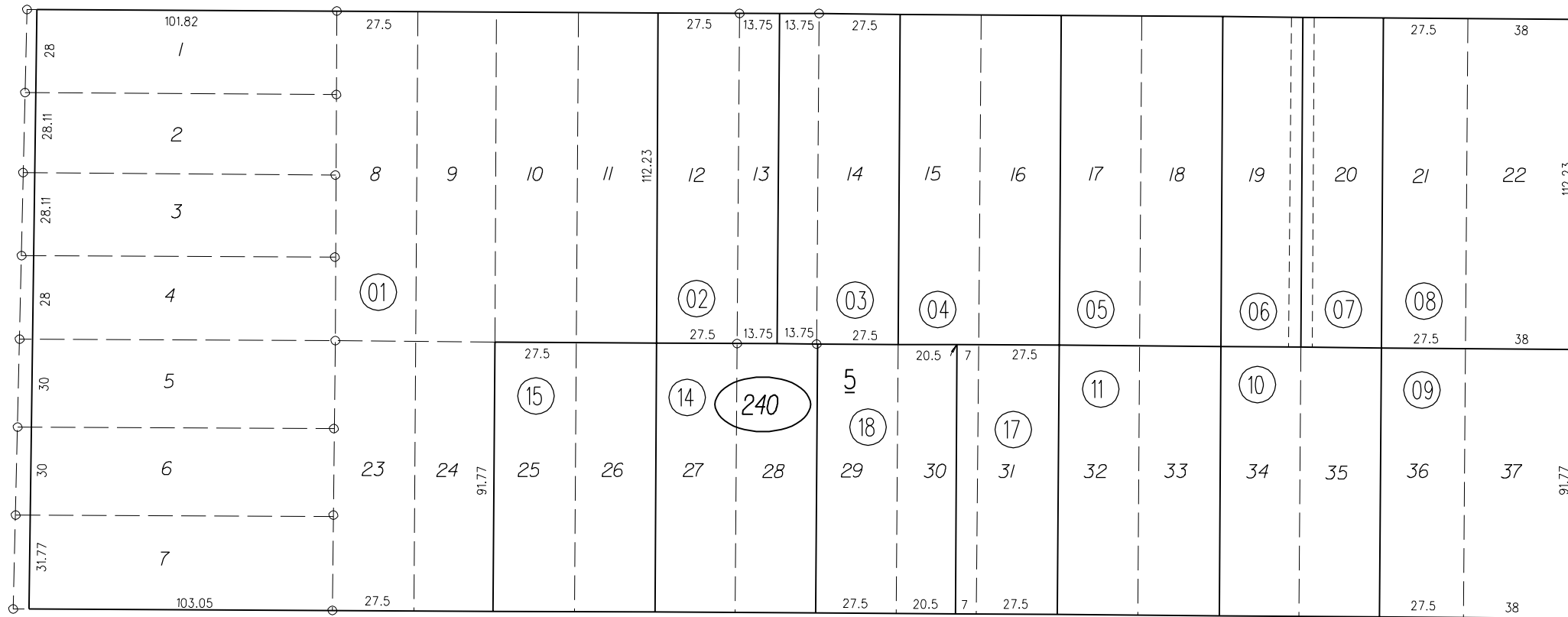
80'
ST.



GAYNOR

AVE.

60'



PB
529

GARVIN

60'

80'
23RD

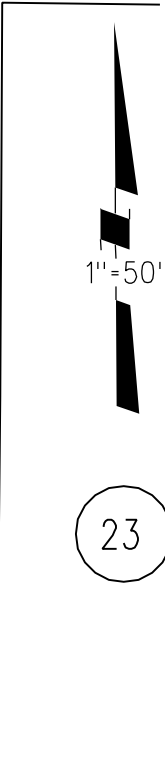


GARVIN

AVE.

60'

50'
ST.



1"=50'

23

50'
24TH

NOTE: THIS MAP WAS PREPARED FOR ASSESSMENT PURPOSES ONLY. NO LIABILITY IS ASSUMED FOR THE ACCURACY OF THE INFORMATION DELINEATED HEREON. ASSESSOR'S PARCELS MAY NOT COMPLY WITH LOCAL LOT SPLIT OR BUILDING SITE ORDINANCES.