

A- ALVARADO TRACT M.B. 1-5
 B- SOITO'S FIRST ADDITION TO CITY OF RICHMOND M.B. D-78

14

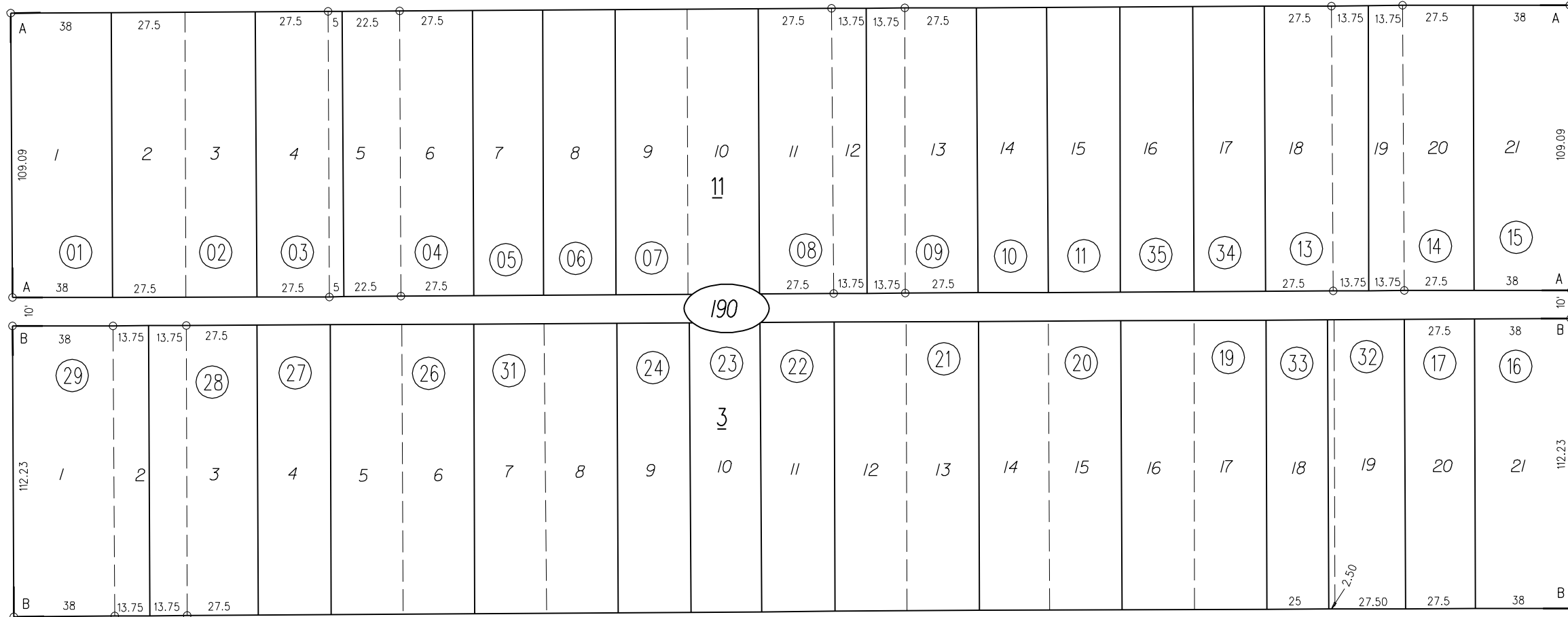
50' ESMOND AVE. 50'

ST.

26TH

ST.

28TH



1"=50'

18

20

60' GAYNOR AVE. 60'

22

190

NOTE: THIS MAP WAS PREPARED FOR ASSESSMENT PURPOSES ONLY. NO LIABILITY IS ASSUMED FOR THE ACCURACY OF THE INFORMATION DELINEATED HEREON. ASSESSOR'S PARCELS MAY NOT COMPLY WITH LOCAL LOT SPLIT OR BUILDING SITE ORDINANCES.

ASSESSOR'S MAP
 BOOK 528 PAGE 19
 CONTRA COSTA COUNTY, CALIF.