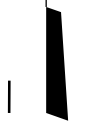


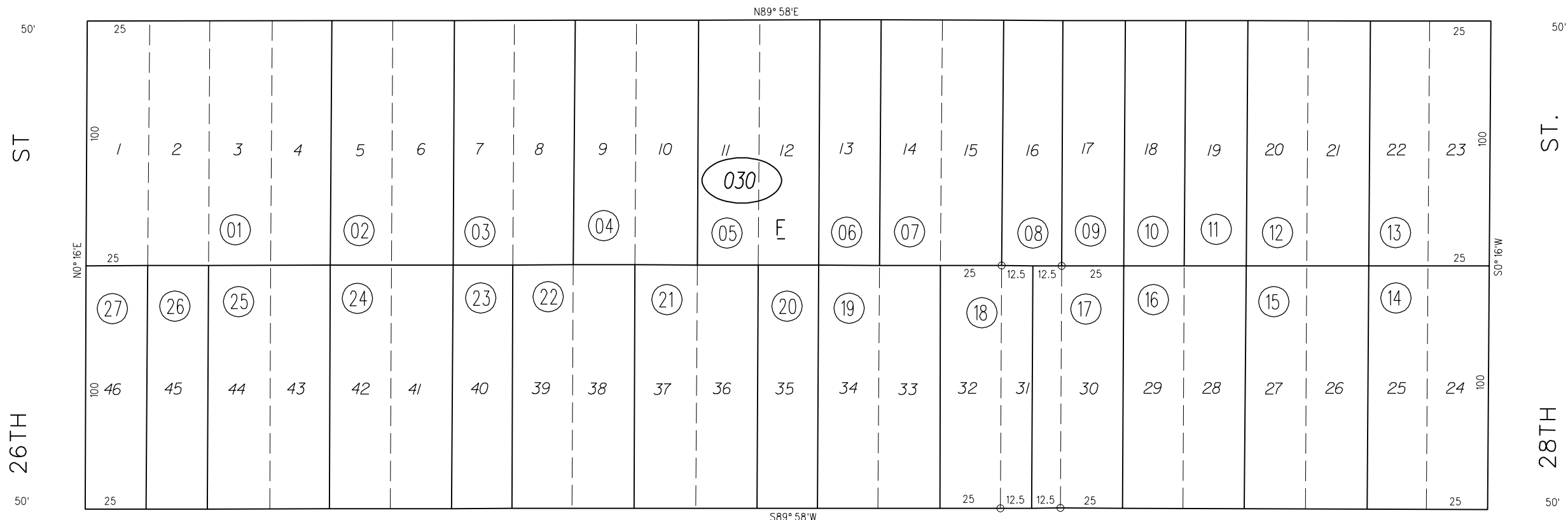
ANDRADE BOULEVARD TRACT M. B. 1-6

PB
527

1" = 50'



60' HUMPHREY AVE. 60'



02

4

70' ANDRADE AVE. 70'

06

030

NOTE: THIS MAP WAS PREPARED FOR ASSESSMENT PURPOSES ONLY. NO LIABILITY IS ASSUMED FOR THE ACCURACY OF THE INFORMATION DELINEATED HEREON. ASSESSOR'S PARCELS MAY NOT COMPLY WITH LOCAL LOT SPLIT OR BUILDING SITE ORDINANCES.