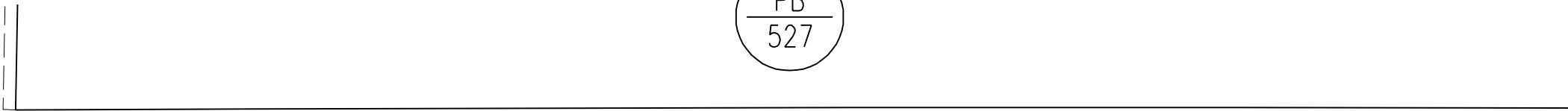


ANDRADE BOULEVARD TRACT M. B. 1-6

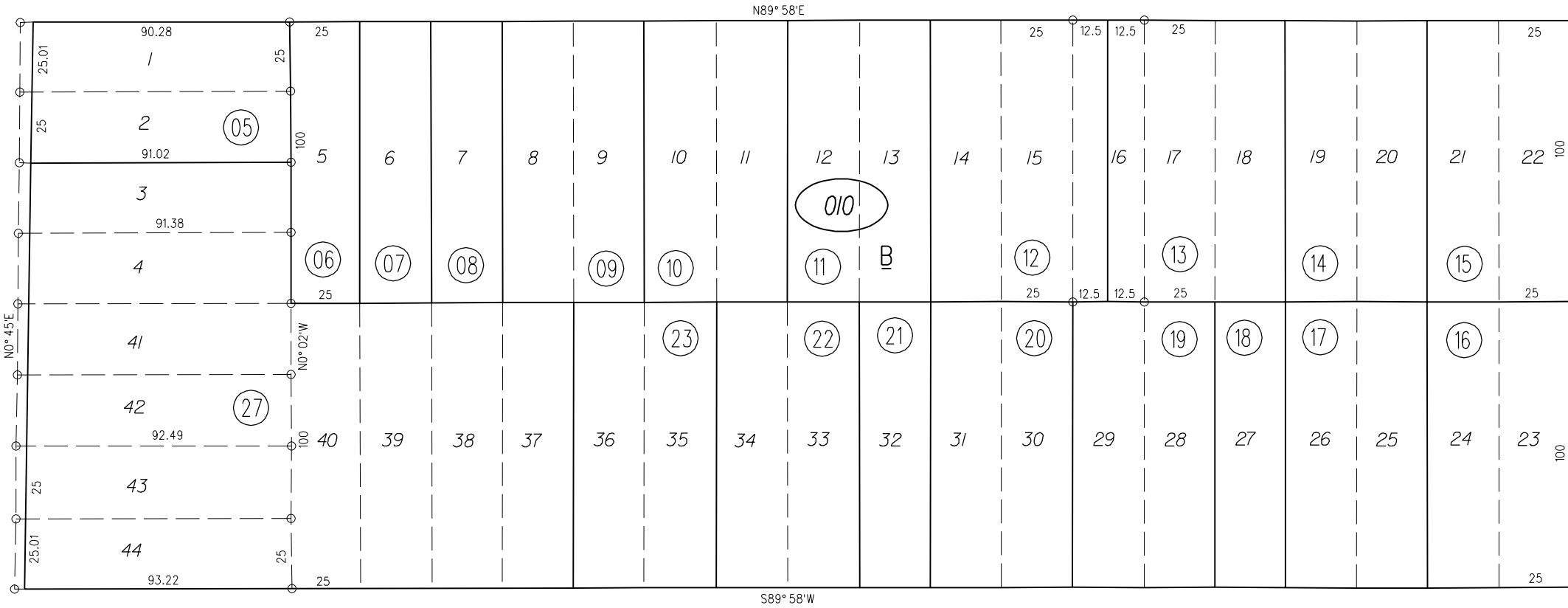
PB
527



80'



60' HUMPHREY AVE. 60'



PB
530

HELLINGS

ST.

23RD

50'

24TH

70' ANDRADE AVE. 70'

80'

08

NOTE: THIS MAP WAS PREPARED FOR ASSESSMENT PURPOSES ONLY. NO LIABILITY IS ASSUMED FOR THE ACCURACY OF THE INFORMATION DELINEATED HEREON. ASSESSOR'S PARCELS MAY NOT COMPLY WITH LOCAL LOT SPLIT OR BUILDING SITE ORDINANCES.

