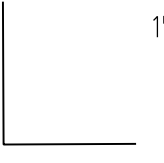


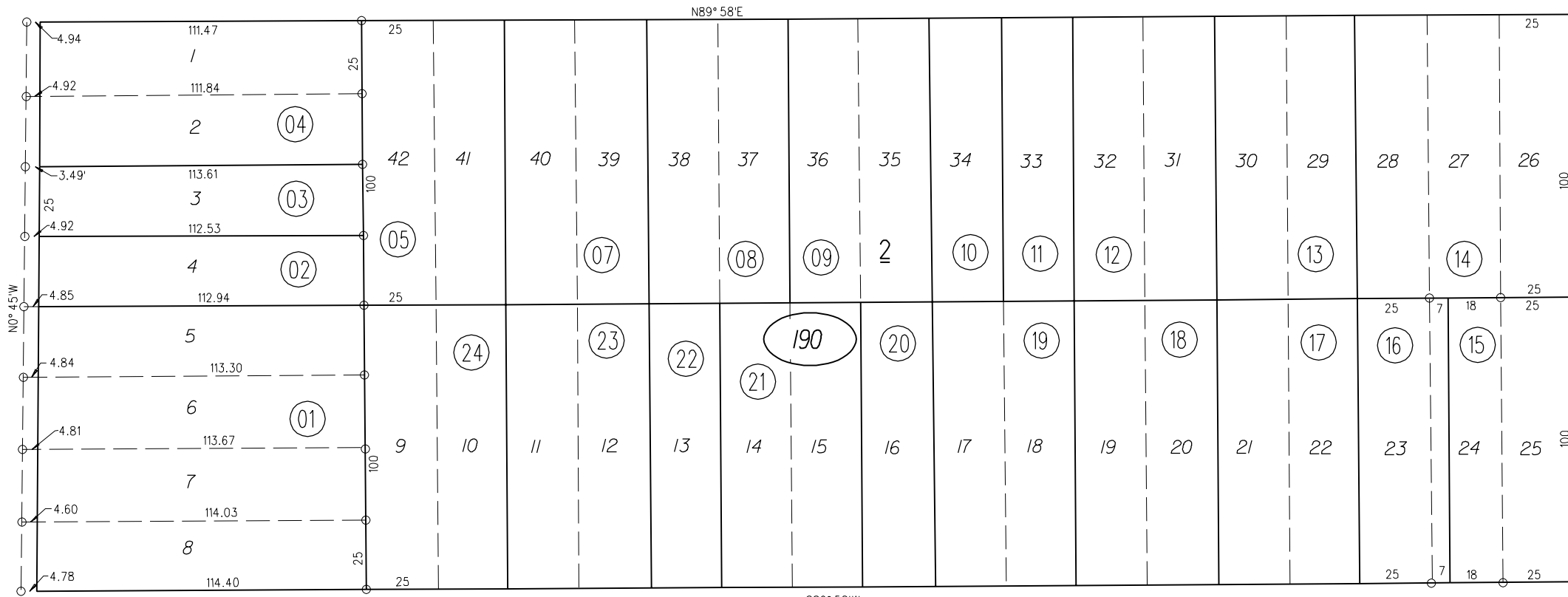
PERES ANDRADE TRACT M.B.1-22

18

1"=50'



60 LOWELL AVE. 60



ST. 50

24TH 50

20

DUNN AVE.

PB
530

ST.

23RD

60 HUMPHREY AVE. 60

PB
528

190

NOTE: THIS MAP WAS PREPARED FOR ASSESSMENT PURPOSES ONLY. NO LIABILITY IS ASSUMED FOR THE ACCURACY OF THE INFORMATION DELINEATED HEREON. ASSESSOR'S PARCELS MAY NOT COMPLY WITH LOCAL LOT SPLIT OR BUILDING SITE ORDINANCES.