

14

AVE

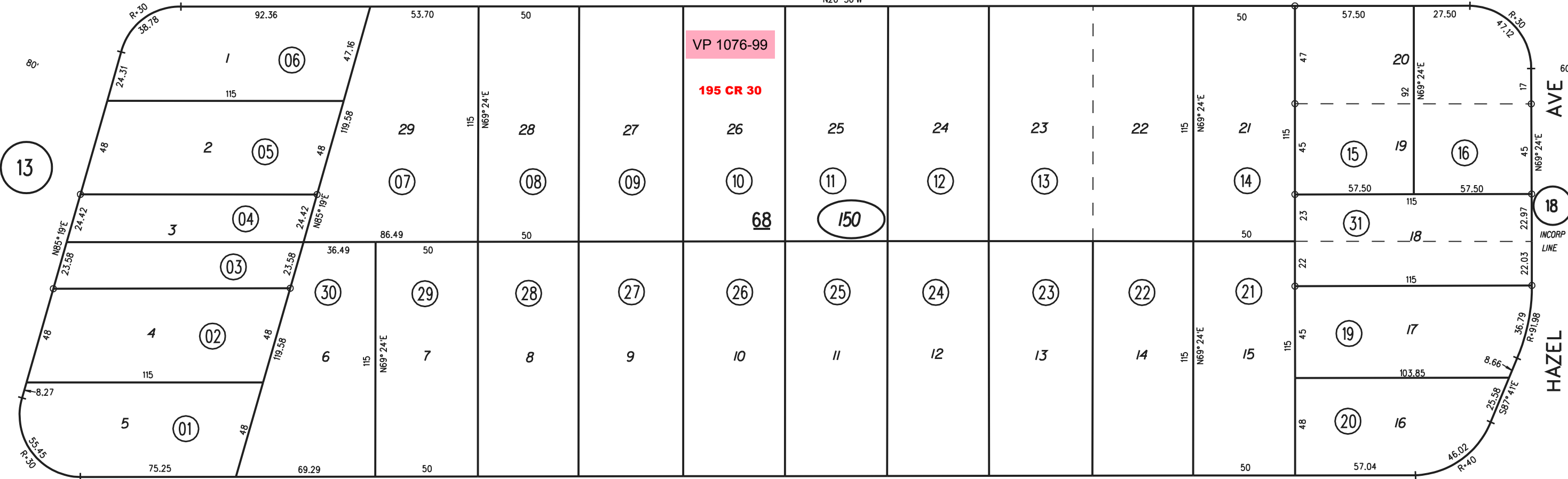
145 CR 44

RALSTON

(FRESNO)

AVE

N20° 36' W



VP 1076-99

195 CR 30

68

150

AVE

18

HAZEL

INCORP LINE

SIERRA

SONOMA

ST

N20° 36' W

NOTE: THIS MAP WAS PREPARED FOR ASSESSMENT PURPOSES ONLY. NO LIABILITY IS ASSUMED FOR THE ACCURACY OF THE INFORMATION DELINEATED HEREON. ASSESSOR'S PARCELS MAY NOT COMPLY WITH LOCAL LOT SPLIT OR BUILDING SITE ORDINANCES.

16

17

150

31

3/29/10

1962 ROLL 70/2, 142/55 ASSESSOR'S MAP BOOK 520 PAGE 15 CONTRA COSTA COUNTY, CALIF.