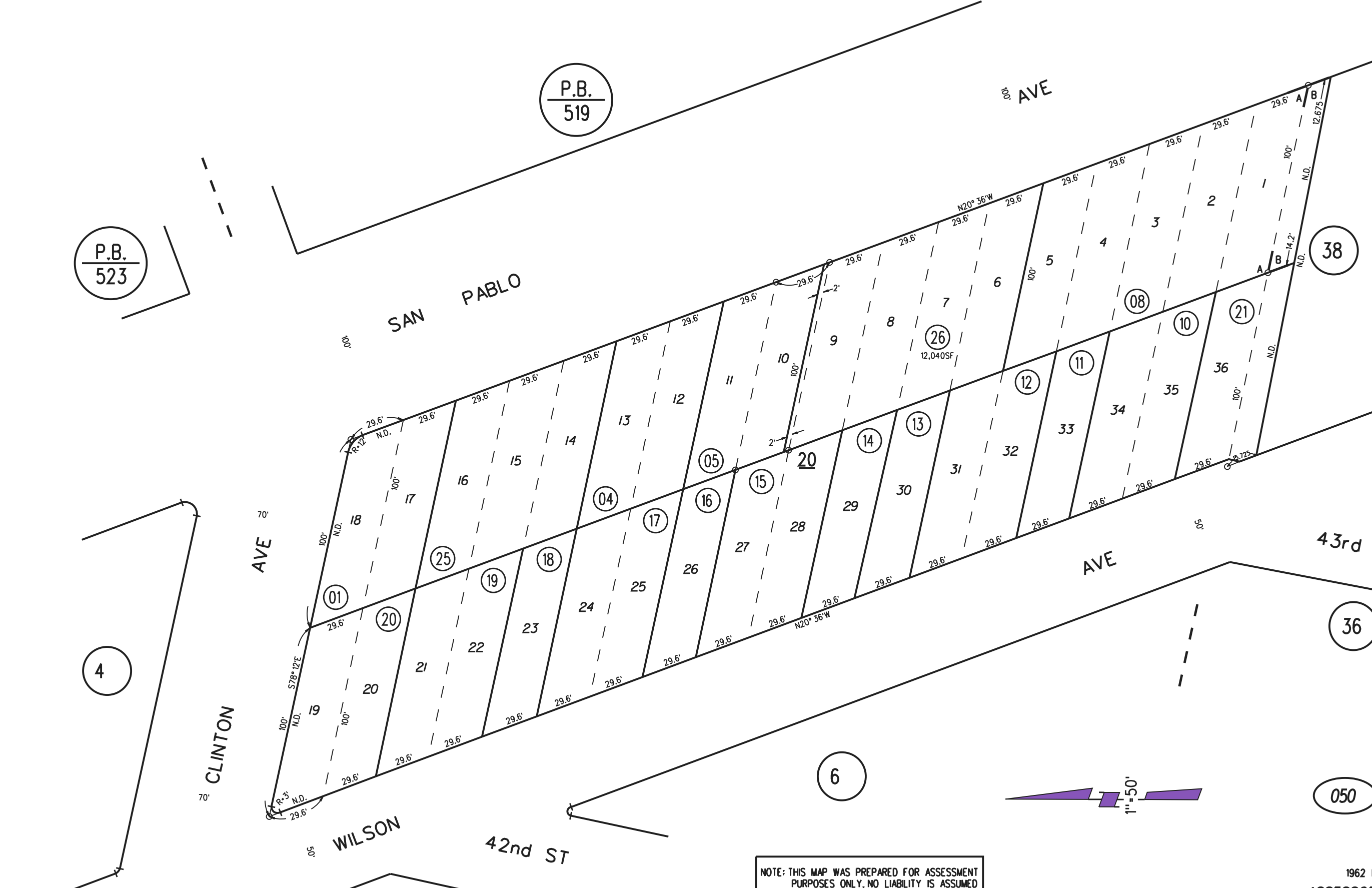


A- GRAND VIEW TERRACE M.B. 6-148
 B- SPAULDING RICHMOND - PULLMAN TOWNSITE M.B. 4-80

P.B.
523

P.B.
519



NOTE: THIS MAP WAS PREPARED FOR ASSESSMENT PURPOSES ONLY. NO LIABILITY IS ASSUMED FOR THE ACCURACY OF THE INFORMATION DELINEATED HEREON. ASSESSOR'S PARCELS MAY NOT COMPLY WITH LOCAL LOT SPLIT OR BUILDING SITE ORDINANCES.

1962 ROLL
 ASSESSOR'S MAP
 BOOK 518 PAGE 05
 CONTRA COSTA COUNTY, CALIF.

050 26
8/23/16

Sanborn Date : 19/03/1999