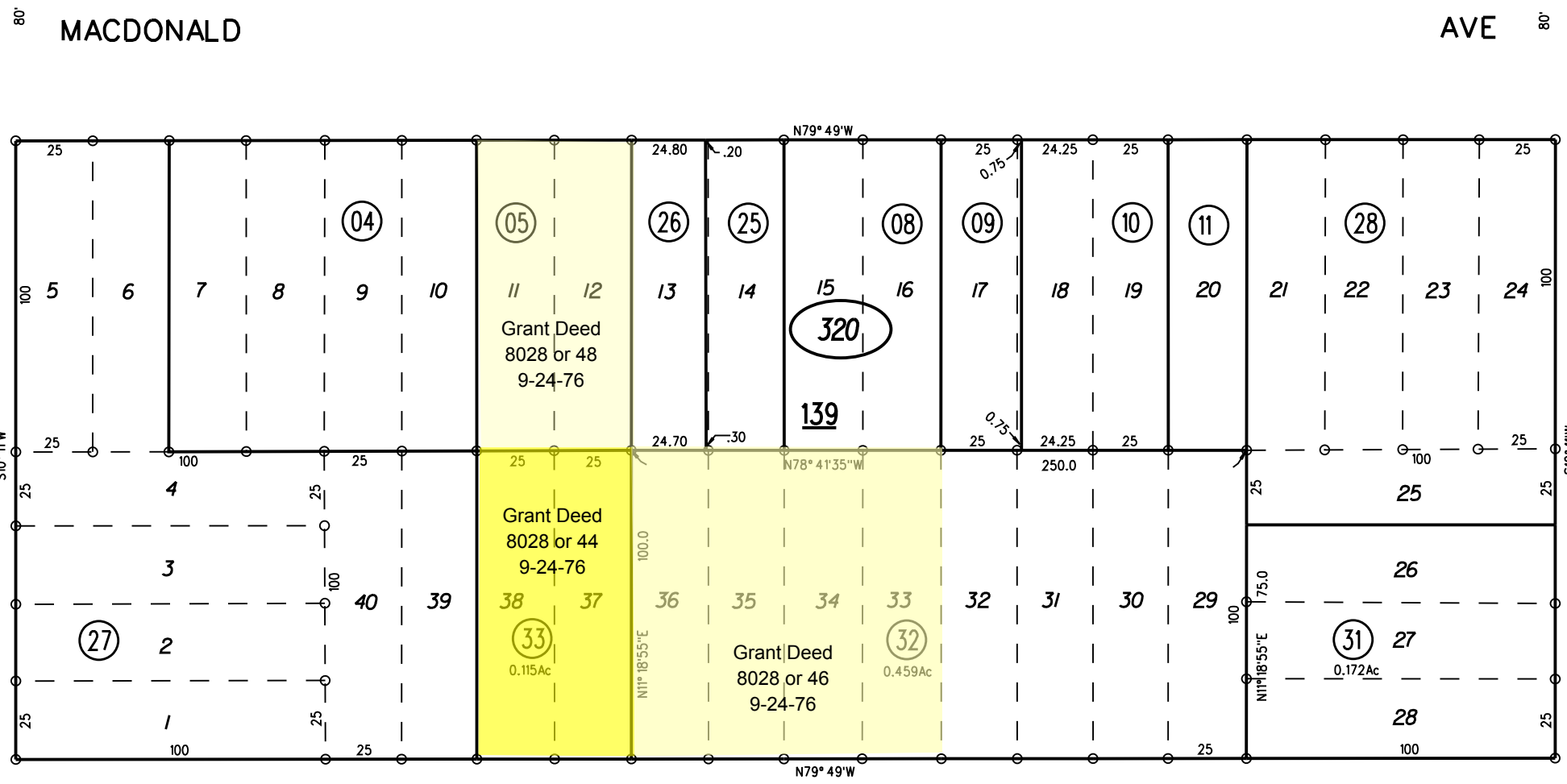
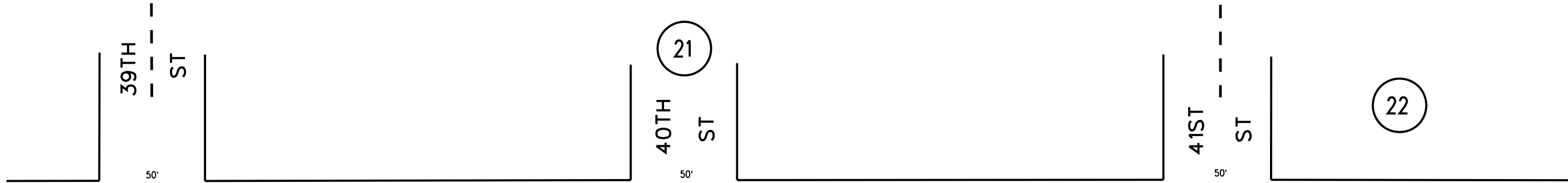


WALL'S ADDITION M.B. 2-30



ST

MACDONALD

AVE

ST

33

39TH

41ST

31

1"=50'

60'

BISSELL

AVE

28

NOTE: THIS MAP WAS PREPARED FOR ASSESSMENT PURPOSES ONLY. NO LIABILITY IS ASSUMED FOR THE ACCURACY OF THE INFORMATION DELINEATED HEREON. ASSESSOR'S PARCELS MAY NOT COMPLY WITH LOCAL LOT SPLIT OR BUILDING SITE ORDINANCES.

28

320

30-32

6/26/19

1962 ROLL
ASSESSOR'S MAP
BOOK 517 PAGE 32
CONTRA COSTA COUNTY, CALIF.